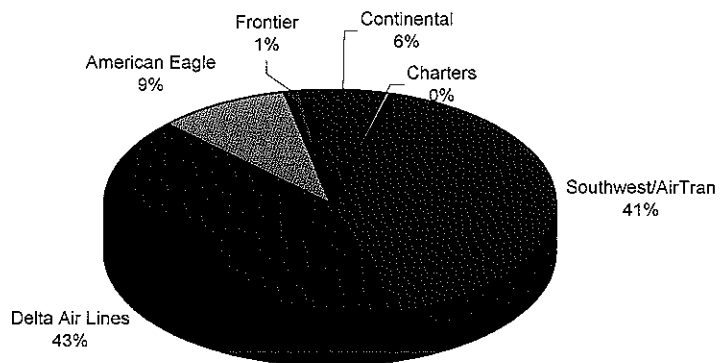


**BISHOP INTERNATIONAL AIRPORT AUTHORITY
AIRLINE PASSENGER COMPARISON
CALENDAR YEARS 2011 AND 2012**

ENPLANEMENTS	SOUTHWEST/AIRTRAN			DELTA			AMERICAN EAGLE		
	2011	2012	% Change	2011	2012	% Change	2011	2012	% Change
January	16,980	13,010	-23.38%	14,504	12,701	-12.43%	3,219	3,130	-2.76%
February	17,286	16,359	-5.36%	14,196	14,091	-0.74%	2,757	3,084	11.86%
March	19,616	19,015	-3.06%	17,273	16,894	-2.19%	3,618	3,247	-10.25%
April	16,119	11,816	-26.70%	16,036	14,698	-8.34%	3,858	3,167	-17.91%
May	12,675	11,584	-8.61%	16,631	15,353	-7.68%	4,397	3,359	-23.61%
June	13,115	13,597	3.68%	16,710	15,114	-9.55%	4,343	3,298	-24.06%
July	14,638			17,765			4,430		
August	15,673			18,565			4,334		
September	11,252			15,674			3,396		
October	12,811			17,070			3,570		
November	14,695			14,511			3,072		
December	15,187			14,029			2,992		
Through June	95,791	85,381	-10.87%	95,350	88,851	-6.82%	22,192	19,285	-13.10%

ENPLANEMENTS	FRONTIER			CONTINENTAL			CHARTERS		
	2011	2012	% Change	2011	2012	% Change	2011	2012	% Change
January	2,194	1,252	-42.94%	1,764	1,418	-19.61%	0	158	N/A
February	1,953	1,016	-47.98%	1,487	1,700	14.32%	0	0	N/A
March	2,473	283	-88.56%	2,395	1,937	-19.12%	0	0	N/A
April	2,103	0	N/A	2,228	1,960	-12.03%	159	0	N/A
May	2,444	0	N/A	2,752	2,880	4.65%	158	136	N/A
June	2,297	0	N/A	3,224	3,222	-0.06%	0	0	N/A
July	2,575			3,033			0		
August	2,603			3,141			0		
September	2,413			2,434			0		
October	1,864			2,717			159		
November	1,433			2,472			0		
December	1,493			2,248			0		
Through June	13,464	2,551	-81.05%	13,850	13,117	-5.29%	317	294	N/A

**ENPLANEMENT SHARE BY AIRLINE
Calendar Year 2012**



	TOTAL		
	2011	2012	% Change
January	38,661	31,669	-18.09%
February	37,679	36,250	-3.79%
March	45,375	41,376	-8.81%
April	40,503	31,641	-21.88%
May	39,057	33,312	-14.71%
June	39,689	35,231	-11.23%
July	42,441	0	
August	44,316	0	
September	35,169	0	
October	38,191	0	
November	36,183	0	
December	35,949	0	
Through June	240,964	209,479	-13.07%
Total Year	473,213	209,479	

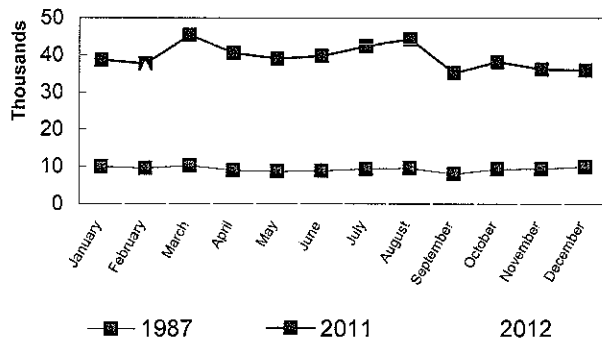
Southwest/AirTran
 Delta Air Lines
 American Eagle

Frontier
 Continental
 Charters

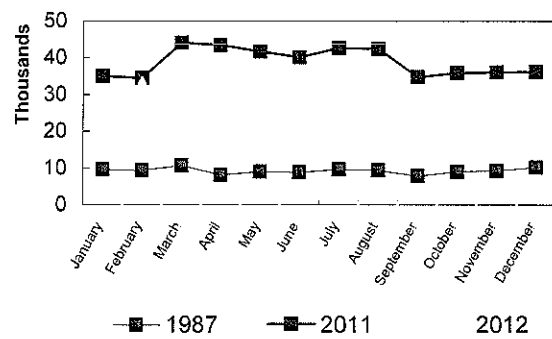
**BISHOP INTERNATIONAL AIRPORT
PASSENGER STATISTICAL COMPARISON
FOR THE YEARS 1987, 2011, 2012**

ENPLANED PASSENGERS				% CHANGE	% CHANGE
	1987	2011	2012	1987/2012	2011/2012
January	10,008	38,661	31,669	216.44%	-18.09%
February	9,544	37,679	36,250	279.82%	-3.79%
March	10,287	45,375	41,376	302.22%	-8.81%
April	8,967	40,503	31,641	252.86%	-21.88%
May	8,685	39,057	33,312	283.56%	-14.71%
June	8,891	39,689	35,231	296.25%	-11.23%
July	9,372	42,441			
August	9,586	44,316			
September	8,038	35,169			
October	9,350	38,191			
November	9,402	36,183			
December	10,010	35,949			
Total thru June	56,382	240,964	209,479	-13.07%	-13.07%
Total for Year	112,140	473,213	209,479		

**ENPLANEMENT COMPARISON
Pre-Authority vs 2011 & 2012**



**DEPLANEMENT COMPARISON
Pre-Authority vs 2011 & 2012**



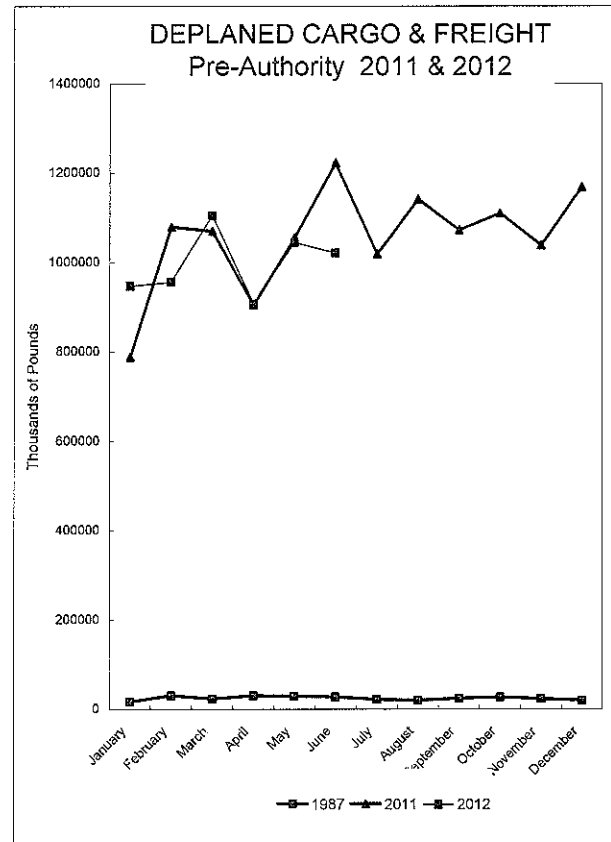
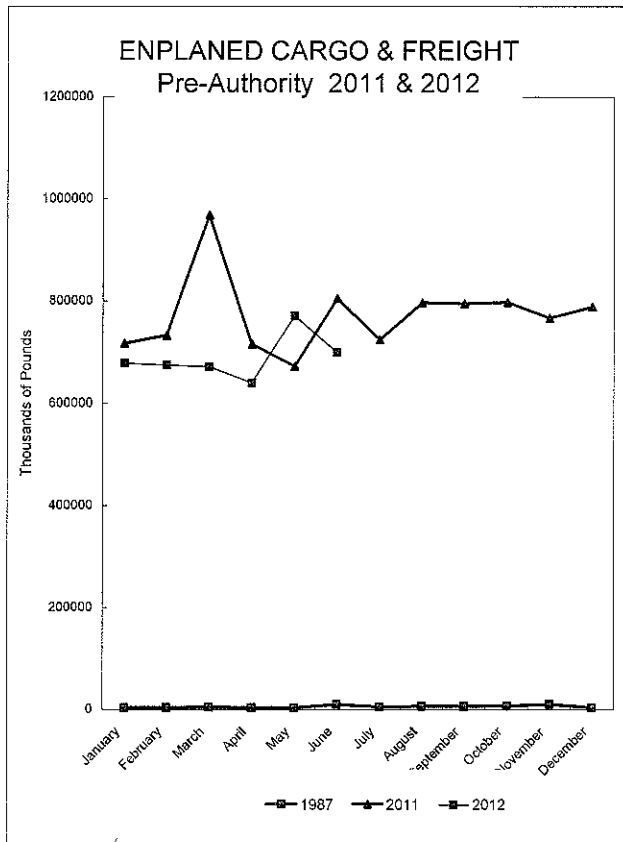
DEPLANED PASSENGERS				% CHANGE	% CHANGE
	1987	2011	2012	1987/2012	2011/2012
January	9,542	34,971	29,441	208.54%	-15.81%
February	9,380	34,397	33,050	252.35%	-3.92%
March	10,646	44,014	40,321	278.74%	-8.39%
April	8,139	43,481	35,493	336.09%	-18.37%
May	8,969	41,676	35,683	297.85%	-14.38%
June	8,795	40,088	35,541	304.10%	-11.34%
July	9,592	42,659			
August	9,331	42,384			
September	7,740	34,713			
October	9,005	35,855			
November	9,235	36,029			
December	10,114	36,139			
Total thru June	55,471	238,627	209,529	277.73%	-12.19%
Total for Year	110,488	466,406	209,529		

Total all current month	296,435	448,106	419,008
Total all for the year	222,628	939,619	419,008

BISHOP INTERNATIONAL AIRPORT AIR CARGO AND FREIGHT COMPARISON Pre-Authority(1987) 2011 & 2012

TOTAL AIR CARGO AND FREIGHT

	ENPLANED CARGO & FREIGHT					DEPLANED CARGO & FREIGHT				
	1987	2011	2012	% Change 87-2012	% Change 2011-2012	1987	2011	2012	% Change 87-2012	% Change 2011-2012
January	3 660	717,075	679,116	18455 08%	-5 29%	16 557	788,935	947,207	5620 89%	20 06%
February	3 582	732,862	674,955	18742 96%	-7 90%	30 397	1,079,635	956,307	3046 06%	-11 42%
March	4 268	968,925	671,953	15643 98%	-30 65%	23 013	1,070,162	1,105,392	4703 34%	3 29%
April	3 747	715,890	640,419	16991 51%	-10 54%	30 094	905,313	908,072	2917 45%	0 30%
May	3 219	672,616	771,005	23851 69%	14 63%	28 459	1,055,984	1,045,167	3572 54%	-1 02%
June	9 901	805,922	699,389	6963 82%	-13 22%	27 135	1,223,574	1,021,289	3663 73%	-16 53%
July	5 316	725,008		-100 00%	-100 00%	21 325	1,019,092		-100 00%	-100 00%
August	6 299	797,001		-100 00%	-100 00%	19 064	1,141,719		-100 00%	-100 00%
September	6 509	795,054		-100 00%	-100 00%	23 494	1,072,235		-100 00%	-100 00%
October	7 148	797,619		-100 00%	-100 00%	26 707	1,110,252		-100 00%	-100 00%
November	10 254	767,016		-100 00%	-100 00%	22 817	1,038,807		-100 00%	-100 00%
December	3 905	788,901		-100 00%	-100 00%	19 423	1,169,387		-100 00%	-100 00%
Total thru June	28,377	4,613,290	4,136,837	14478.13%	-10.33%	155,655	6,123,603	5,983,434	3744.04%	-2.29%
Annual Total	67,808	9,283,889	4,136,837			288,485	12,675,095	5,983,434		



FEDEX

	ENPLANED CARGO & FREIGHT					DEPLANED CARGO & FREIGHT				
	1987	2011	2012	% Change 87-2012	% Change 2011-2012	1987	2011	2012	% Change 87-2012	% Change 2011-2012
January	0	676 286	642 380	N/A	-5.01%	0	751 920	924 102	N/A	22.90%
February	0	696 506	608 632	N/A	-12.62%	0	981 435	933 983	N/A	-4.83%
March	0	914 698	632 032	N/A	-30.90%	0	1 042 312	1 076 209	N/A	3.25%
April	0	676 545	603 006	N/A	-10.87%	0	879 317	881 605	N/A	0.26%
May	0	589 659	729 180	N/A	0.23661303	0	1 027 956	1 013 981	N/A	-1.36%
June	0	744 393	657 163	N/A	-11.72%	0	1 148 644	989 788	N/A	-13.83%
July	0	686 454				0	974 633			
August	0	719 150				0	1 079 369			
September	0	690 998				0	993 071			
October	0	696 487				0	1 078 920			
November	0	735 912				0	1 004 847			
December	0	716 774				0	1 128 989			
Total thru June	0	4,298,087	3,872,393	N/A	-9.90%	0	5,831,584	5,819,668	N/A	-0.20%

GVA

	ENPLANED CARGO & FREIGHT					DEPLANED CARGO & FREIGHT				
	1987	2011	2012	% Change 87-2012	% Change 2011-2012	1987	2011	2012	% Change 87-2012	% Change 2011-2012
January	0	7 375	0	N/A	N/A	0	5 618	0	N/A	N/A
February	0	0	31 877	N/A	N/A	0	77 542	379	N/A	N/A
March	0	10 430	64	N/A	-99.39%	0	4 639	725	N/A	-84.37%
April	0	0	0	N/A	N/A	0	649	0	N/A	N/A
May	0	41 390	0	N/A	N/A	0	0	0	N/A	N/A
June	0	21 476	0	N/A	N/A	0	40 581	0	N/A	N/A
July	0	0				0	21 155			
August	0	38 791				0	30 476			
September	0	57 245				0	52 815			
October	0	63 199				0	23			
November	0	0				0	5 684			
December	0	10 998				0	12 878			
Total thru June	0	80,671	31,941	N/A	N/A	0	129,029	1,104	N/A	N/A

DELTA/ASA

	ENPLANED CARGO & FREIGHT					DEPLANED CARGO & FREIGHT				
	1987	2011	2012	% Change 87-2012	% Change 2011-2012	1987	2011	2012	% Change 87-2012	% Change 2011-2012
January	0	0	119	N/A	N/A	0	25	798	N/A	3092.00%
February	0	596	203	N/A	-65.94%	0	492	1 195	N/A	142.89%
March	0	0	334	N/A	N/A	0	0	1 258	N/A	N/A
April	0	718	130	N/A	-81.89%	0	448	627	N/A	39.96%
May	0	0	256	N/A	N/A	0	0	626	N/A	N/A
June	0	119	0	N/A	N/A	0	199	713	N/A	258.29%
July	0	417				0	255			
August	0	269				0	694			
September	0	0				0	308			
October	0	192				0	583			
November	0	143				0	330			
December	0	108				0	432			
Total thru June	0	1,433	1,042	N/A	N/A	0	1,164	5,217	N/A	N/A

AMERICAN EAGLE/CONN

	ENPLANED CARGO & FREIGHT					DEPLANED CARGO & FREIGHT				
	1987	2011	2012	% Change 87-2012	% Change 2011-2012	1987	2011	2012	% Change 87-2012	% Change 2011-2012
January	0	0	0	N/A	N/A	0	515	642	N/A	24.66%
February	0	8	0	N/A	N/A	0	66	216	N/A	227.27%
March	0	0	0	N/A	N/A	0	92	325	N/A	253.26%
April	0	0	0	N/A	N/A	0	0	338	N/A	N/A
May	0	0	0	N/A	N/A	0	1 158	307	N/A	-73.49%
June	0	0	0	N/A	N/A	0	0	733	N/A	N/A
July	0	0				0	0			
August	0	0				0	662			
September	0	0				0	0			
October	0	0				0	0			
November	0	0				0	0			
December	0	0				0	0			
Total thru June	0	8	0	N/A	N/A	0	1,831	2,561	N/A	39.87%

Northwest

	ENPLANED CARGO & FREIGHT					DEPLANED CARGO & FREIGHT				
	1987	2011	2012	% Change 87-2012	% Change 2011-2012	1987	2011	2012	% Change 87-2012	% Change 2011-2012
January	120	0	0	N/A	N/A	837	0	0	N/A	N/A
February	310	0	0	N/A	N/A	1 649	0	0	N/A	N/A
March	256	0	0	N/A	N/A	2 098	0	0	N/A	N/A
April	0	0	0	N/A	N/A	0	0	0	N/A	N/A
May	0	0	0	N/A	N/A	0	0	0	N/A	N/A
June	0	0	0	N/A	N/A	0	0	0	N/A	N/A
July	0	0	0			0	0	0		
August	0	0	0			0	0	0		
September	0	0	0			0	0	0		
October	0	0	0			0	0	0		
November	0	0	0			0	0	0		
December	0	0	0			0	0	0		
Total thru June	686	0	0	-100.00%	N/A	4,584	0	0	-100.00%	N/A

FRONTIER AIRLINES

	ENPLANED CARGO & FREIGHT					DEPLANED CARGO & FREIGHT				
	1987	2011	2012	% Change 87-2012	% Change 2011-2012	1987	2011	2012	% Change 87-2012	% Change 2011-2012
January	0	0	0	N/A	N/A	0	0	20	N/A	N/A
February	0	0	0	N/A	N/A	0	100	36	N/A	-64.00%
March	0	0	0	N/A	N/A	0	27	0	N/A	N/A
April	0	0	0	N/A	N/A	0	21	0	N/A	N/A
May	0	0	0	N/A	N/A	0	85	0	N/A	N/A
June	0	0	0	N/A	N/A	0	14	0	N/A	N/A
July	0	0	0			0	35	0		
August	0	0	0			0	42	0		
September	0	0	0			0	0	0		
October	0	0	0			0	0	0		
November	0	0	0			0	36	0		
December	0	0	0			0	62	0		
Total thru June	0	0	0	N/A	N/A	0	247	56	N/A	-77.33%

MOUNTAIN AIR CARGO

	ENPLANED CARGO & FREIGHT					DEPLANED CARGO & FREIGHT				
	1987	2011	2012	% Change 87-2012	% Change 2011-2012	1987	2011	2012	% Change 87-2012	% Change 2011-2012
January	0	0	0	N/A	N/A	0	0	0	N/A	N/A
February	0	0	0	N/A	N/A	0	0	0	N/A	N/A
March	0	0	0	N/A	N/A	0	0	0	N/A	N/A
April	0	0	0	N/A	N/A	0	0	0	N/A	N/A
May	0	0	0	N/A	N/A	0	0	0	N/A	N/A
June	0	0	0	N/A	N/A	0	0	0	N/A	N/A
July	0	0	0			0	0	0		
August	0	0	0			0	0	0		
September	0	0	0			0	0	0		
October	0	0	0			0	0	0		
November	0	0	0			0	0	0		
December	0	0	0			0	0	0		
Total thru June	0	0	0	N/A	N/A	0	0	0	N/A	N/A

CSA Air, Inc.

	ENPLANED CARGO & FREIGHT					DEPLANED CARGO & FREIGHT				
	1987	2011	2012	% Change 87-2012	% Change 2011-2012	1987	2011	2012	% Change 87-2012	% Change 2011-2012
January	0	33 414	36 617	N/A	9 59%	0	30 857	21 645	N/A	-29 85%
February	0	35 752	34 243	N/A	-4 22%	0	20 000	20 498	N/A	2 49%
March	0	43 797	39 523	N/A	-9 76%	0	23 092	26 875	N/A	16 38%
April	0	38 627	37 283	N/A	-3 48%	0	24 878	25 502	N/A	2 51%
May	0	41 567	41 569	N/A	0 00%	0	26 785	30 253	N/A	12 95%
June	0	39 934	42 226	N/A	5 74%	0	34 136	30 055	N/A	-11 96%
July	0	38 137	0			0	23 014	0		
August	0	38 791	0			0	30 476	0		
September	0	46 811	0			0	26 041	0		
October	0	37 741	0			0	30 726	0		
November	0	30 961	0			0	27 910	0		
December	0	61 021	0			0	27 026	0		
Total thru June	0	233,091	231,461	N/A	-0.70%	0	159,748	154,828	N/A	-3.08%

SOUTHWEST/AIRTRAN

	ENPLANED CARGO & FREIGHT					DEPLANED CARGO & FREIGHT				
	1987	2011	2012	% Change 87-2012	% Change 2011-2012	1987	2011	2012	% Change 87-2012	% Change 2011-2012
January	0	0	0	N/A	N/A	0	0	0	N/A	N/A
February	0	0	0	N/A	N/A	0	0	0	N/A	N/A
March	0	0	0	N/A	N/A	0	0	0	N/A	N/A
April	0	0	0	N/A	N/A	0	0	0	N/A	N/A
May	0	0	0	N/A	N/A	0	0	0	N/A	N/A
June	0	0	0	N/A	N/A	0	0	0	N/A	N/A
July	0	0				0	0			
August	0	0				0	0			
September	0	0				0	0			
October	0	0				0	0			
November	0	0				0	0			
December	0	0				0	0			
Total thru June	0	0	0	N/A	N/A	0	0	0	N/A	N/A

PRIOR CARRIERS

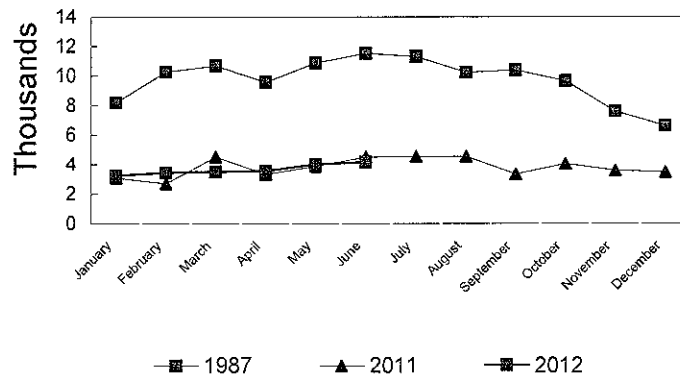
	ENPLANED CARGO & FREIGHT					DEPLANED CARGO & FREIGHT				
	1987	2011	2012	% Change 87-2012	% Change 2011-2012	1987	2011	2012	% Change 87-2012	% Change 2011-2012
January	3 540	0	0	N/A	N/A	15 720	0	0	N/A	N/A
February	3 272	0	0	N/A	N/A	28 748	0	0	N/A	N/A
March	4 012	0	0	N/A	N/A	20 915	0	0	N/A	N/A
April	3 747	0	0	N/A	N/A	30 094	0	0	N/A	N/A
May	3 219	0	0	N/A	N/A	28 459	0	0	N/A	N/A
June	9 901	0	0	N/A	N/A	27 135	0	0	N/A	N/A
July	5 316	0				21 325	0			
August	6 299	0				19 064	0			
September	6 509	0				23 494	0			
October	7 148	0				26 707	0			
November	10 254	0				22 817	0			
December	3 905	0				19 423	0			
Total thru June	27,691	0	0	N/A	N/A	151,071	0	0	N/A	N/A

OPERATIONS STATISTICAL COMPARISON

FOR YEARS 1987, 2011 & 2012

	1987 OPERATIONS	2011 OPERATIONS	2012 OPERATIONS	CHANGE 1987/2012	CHANGE 2011/2012
January	8,177	3,092	3,229	-60.51%	4.43%
February	10,270	2,697	3,427	-66.63%	27.07%
March	10,677	4,490	3,510	-67.13%	-21.83%
April	9,562	3,323	3,546	-62.92%	6.71%
May	10,870	3,869	4,010	-63.11%	3.64%
June	11,514	4,503	4,150	-63.96%	-7.84%
July	11,296	4,544			
August	10,240	4,534			
September	10,389	3,355			
October	9,656	4,051			
November	7,592	3,590			
December	6,608	3,471			
Total Through June	61,070	21,974	21,872	-64.19%	-0.46%
ANNUAL TOTAL	116,851	45,519	21,872		

OPERATIONS Pre-Authority vs 2011 & 2012



**BISHOP INTERNATIONAL AIRPORT
AIR TRAFFIC RECORD 2012**

MONTH	ITINERANT AIRCRAFT				LOCAL AIRCRAFT				TOTAL OPERATIONS	CUMULATIVE OPERATIONS
	AIR CARRIER	AIR TAXI	GENERAL AVIATION	MILITARY	TOTAL ITINERANT	CIVILIAN	MILITARY	TOTAL LOCAL		
JANUARY	576	748	1,155	0	2,479	750	0	750	3,229	3,229
FEBRUARY	553	752	1,192	6	2,503	924	0	924	3,427	3,427
MARCH	598	779	1,310	6	2,693	817	0	817	3,510	3,510
APRIL	505	780	1,244	27	2,556	978	12	990	3,546	3,546
MAY	499	828	1,645	28	3,000	1,010	0	1,010	4,010	4,010
JUNE	506	815	1,508	17	2,846	1,302	2	1,304	4,150	4,150
JULY					0				0	0
AUGUST					0				0	0
SEPTEMBER					0				0	0
OCTOBER					0				0	0
NOVEMBER					0				0	0
DECEMBER					0				0	0
TOTALS	3,237	4,702	8,054	84	16,077	5,781	14	5,795	21,872	

**BISHOP INTERNATIONAL AIRPORT AUTHORITY
AIRLINE LOAD FACTOR ANALYSIS**

June-12

2011

2012

AIRLINE	AVAILABLE SEATS	ENPLANED PAX	LOAD FACTOR	AVAILABLE SEATS	ENPLANED PAX	LOAD FACTOR
SOUTHWEST/AIRTRAN	18,282	13,115	71.74%	17,199	13,597	79.06%
DELTA AIR LINES	20,224	16,710	82.62%	21,540	15,114	70.17%
AMERICAN EAGLE	4,884	4,343	88.92%	3,576	3,298	92.23%
FRONTIER AIRLINES	2,745	2,297	83.68%	0	0	0.00%
CONTINENTAL	3,922	3,224	82.20%	3,774	3,222	85.37%
CHARTER	0	0	N/A	0	0	N/A
ALL AIRLINES	50,057	39,689	79.29%	46,089	35,231	76.44%

**Enplanements vs Available Seats
Current Month**

