

**BISHOP INTERNATIONAL AIRPORT AUTHORITY
AIRLINE PASSENGER COMPARISON
CALENDAR YEARS 2010 AND 2011**

ENPLANEMENTS	SOUTHWEST/AIRTRAN			DELTA			AMERICAN EAGLE		
	2010	2011	% Change	2010	2011	% Change	2010	2011	% Change
January	18,533	16,980	-8.38%	15,247	14,504	-4.87%	3,093	3,219	4.07%
February	19,181	17,286	-9.88%	15,468	14,196	-8.22%	3,333	2,757	-17.28%
March	20,839	19,616	-5.87%	18,776	17,273	-8.00%	3,524	3,618	2.67%
April	17,983	16,119	-10.37%	17,126	16,036	-6.36%	3,284	3,858	17.48%
May	14,357	12,675	-11.72%	16,327	16,631	1.86%	3,517	4,397	25.02%
June	14,181	13,115	-7.52%	18,153	16,710	-7.95%	3,278	4,343	32.49%
July	15,860	14,638	-7.70%	17,462	17,765	1.74%	3,430	4,430	29.15%
August	15,501	15,673	1.11%	17,780	18,565	4.42%	3,636	4,334	19.20%
September	11,537	11,252	-2.47%	16,332	15,674	-4.03%	3,626	3,396	-6.34%
October	14,794	12,811	-13.40%	15,944	17,070	7.06%	3,695	3,570	-3.38%
November	17,545	14,695	-16.24%	15,749	14,511	-7.86%	3,360	3,072	-8.57%
December	18,255	15,187	-16.81%	15,258	14,029	-8.05%	3,186	2,992	-6.09%
Through December	198,566	180,047	-9.33%	199,622	192,964	-3.34%	40,962	43,986	7.38%

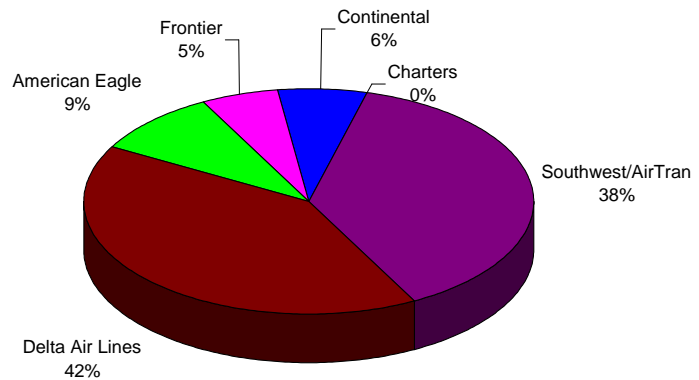
ENPLANEMENTS	FRONTIER			CONTINENTAL			CHARTERS		
	2010	2011	% Change	2010	2011	% Change	2010	2011	% Change
January	2,326	2,194	-5.67%	1,452	1,764	21.49%	0	0	N/A
February	2,302	1,953	-15.16%	1,837	1,487	-19.05%	148	0	N/A
March	2,533	2,473	-2.37%	2,120	2,395	12.97%	0	0	N/A
April	2,554	2,103	-17.66%	1,846	2,228	20.69%	157	159	1.27%
May	2,624	2,444	-6.86%	1,952	2,752	40.98%	0	158	N/A
June	2,990	2,297	-23.18%	2,371	3,224	35.98%	0	0	N/A
July	2,976	2,575	-13.47%	2,651	3,033	14.41%	0	0	N/A
August	3,027	2,603	-14.01%	2,555	3,141	22.94%	0	0	N/A
September	2,609	2,413	-7.51%	1,943	2,434	25.27%	152	0	N/A
October	2,853	1,864	-34.67%	2,324	2,717	16.91%	0	159	N/A
November	2,499	1,433	-42.66%	2,224	2,472	11.15%	156	0	N/A
December	2,493	1,493	-40.11%	2,473	2,248	-9.10%	0	0	N/A
Through December	31,786	25,845	-18.69%	25,748	29,895	16.11%	613	476	N/A

Latest Stats.** July Jan - July 2011
National avg. 1.76% 2.12%
Bishop Airport 0.15% -4.19%

**ENPLANEMENT SHARE BY AIRLINE
Calendar Year 2011**

** RITA Bureau of Transportation Statistics

	2010	TOTAL 2011	% Change
January	40,651	38,661	-4.90%
February	42,269	37,679	-10.86%
March	47,792	45,375	-5.06%
April	42,950	40,503	-5.70%
May	38,777	39,057	0.72%
June	40,973	39,689	-3.13%
July	42,379	42,441	0.15%
August	42,499	44,316	4.28%
September	36,199	35,169	-2.85%
October	39,610	38,191	-3.58%
November	41,533	36,183	-12.88%
December	41,665	35,949	-13.72%
Through December	497,297	473,213	-4.84%
Total Year	497,297	473,213	



■ Southwest/AirTran ■ Delta Air Lines ■ American Eagle
■ Frontier ■ Continental ■ Charters

**BISHOP INTERNATIONAL AIRPORT AUTHORITY
AIRLINE LOAD FACTOR ANALYSIS**

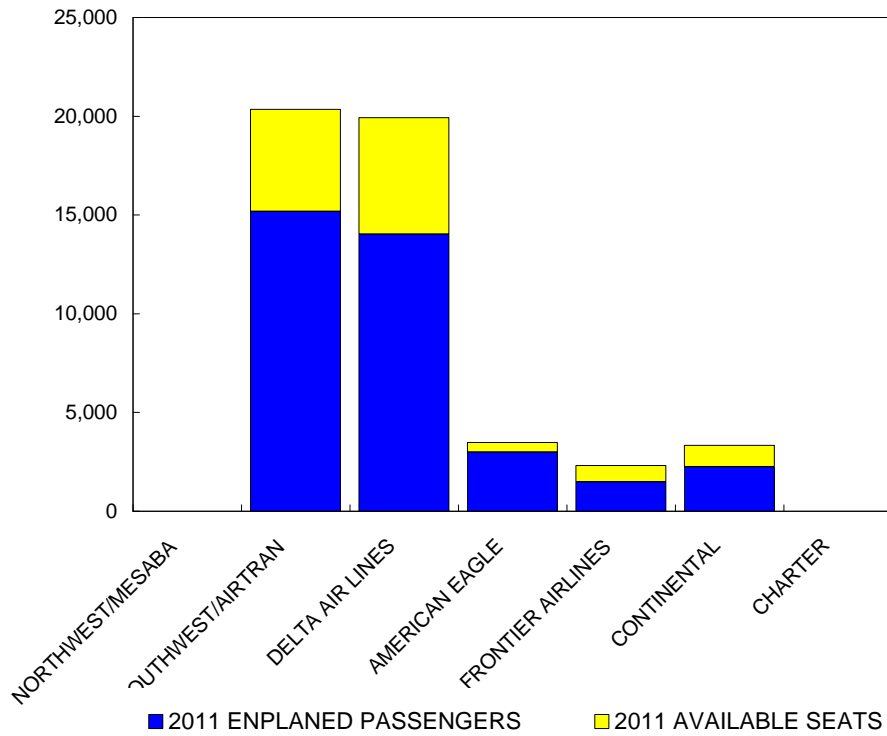
December-11

2010

2011

AIRLINE	AVAILABLE SEATS	ENPLANED PAX	LOAD FACTOR	AVAILABLE SEATS	ENPLANED PAX	LOAD FACTOR
SOUTHWEST/AIRTRAN	22,097	18,255	82.61%	20,358	15,187	74.60%
DELTA AIR LINES	19,259	15,258	79.23%	19,930	14,029	70.39%
AMERICAN EAGLE	3,740	3,186	85.19%	3,476	2,992	86.08%
FRONTIER AIRLINES	2,908	2,493	85.73%	2,312	1,493	64.58%
CONTINENTAL	3,071	2,473	80.53%	3,330	2,248	67.51%
CHARTER	0	0	N/A	0	0	N/A
ALL AIRLINES	51,075	41,665	81.58%	49,406	35,949	72.76%

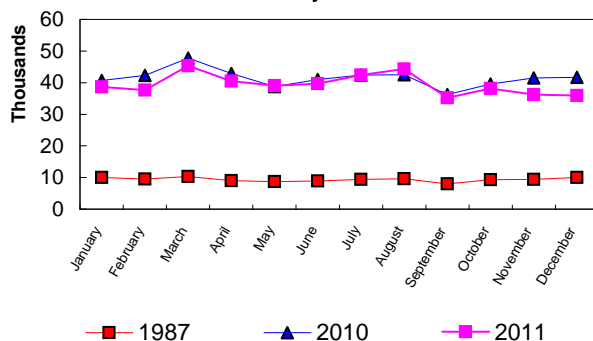
**Enplanements vs Available Seats
Current Month**



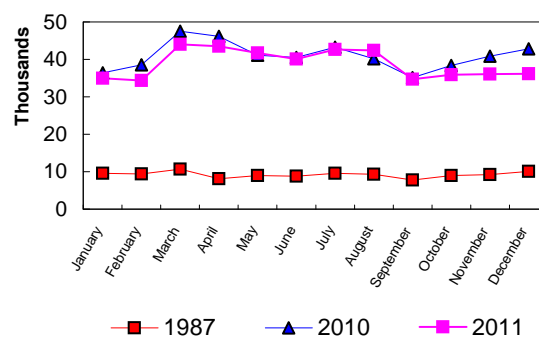
**BISHOP INTERNATIONAL AIRPORT
PASSENGER STATISTICAL COMPARISON
FOR THE YEARS 1987, 2010, 2011**

	ENPLANED PASSENGERS			% CHANGE	% CHANGE
	1987	2010	2011	1987/2011	2010/2011
January	10,008	40,651	38,661	286.30%	-4.90%
February	9,544	42,269	37,679	294.79%	-10.86%
March	10,287	47,792	45,375	341.09%	-5.06%
April	8,967	42,950	40,503	351.69%	-5.70%
May	8,685	38,777	39,057	349.71%	0.72%
June	8,891	40,973	39,689	346.40%	-3.13%
July	9,372	42,379	42,441	352.85%	0.15%
August	9,586	42,499	44,316	362.30%	4.28%
September	8,038	36,199	35,169	337.53%	-2.85%
October	9,350	39,610	38,191	308.46%	-3.58%
November	9,402	41,533	36,183	284.84%	-12.88%
December	10,010	41,665	35,949	259.13%	-13.72%
Total thru December	112,140	497,297	473,213	-4.84%	-4.84%
Total for Year	112,140	497,297	473,213		

ENPLANEMENT COMPARISON
Pre-Authority vs 2010 & 2011



DEPLANEMENT COMPARISON
Pre-Authority vs 2010 & 2011



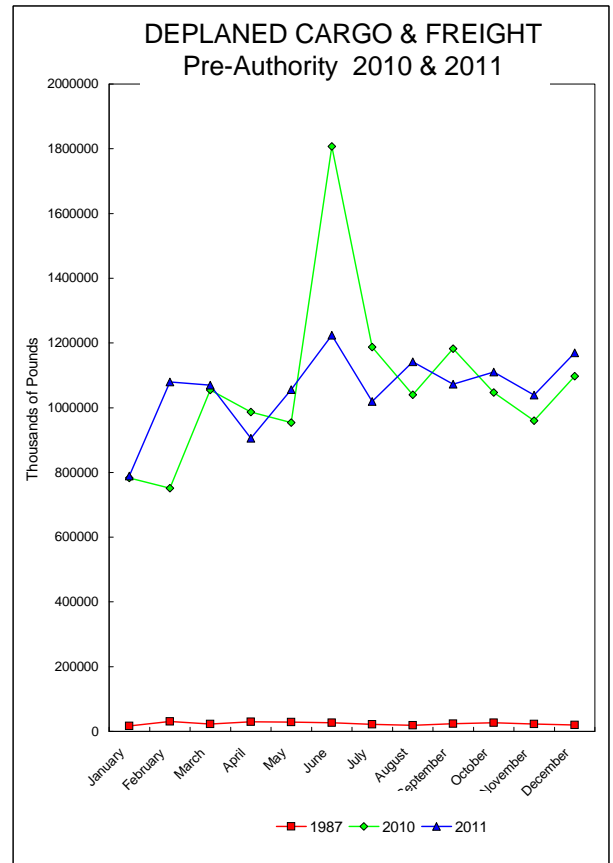
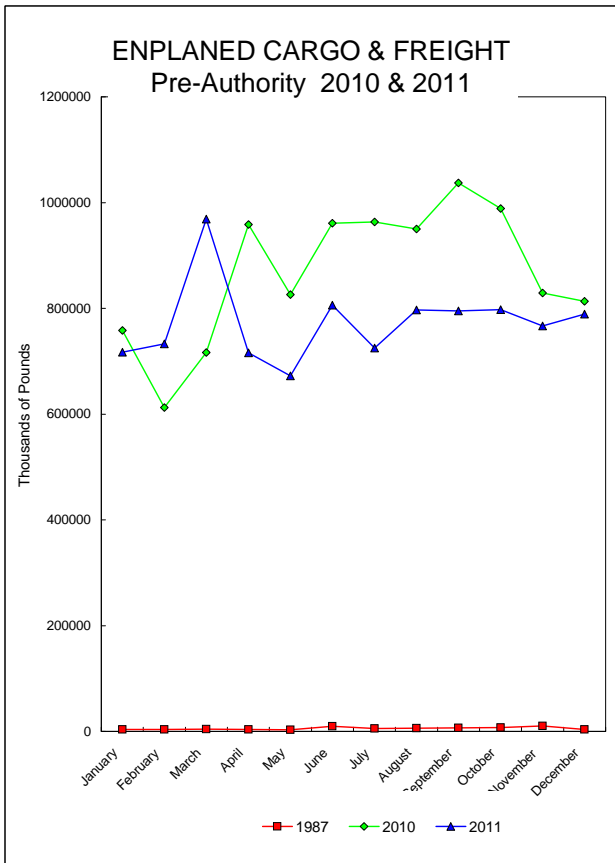
	DEPLANED PASSENGERS			% CHANGE	% CHANGE
	1987	2010	2011	1987/2010	2009/2010
January	9,542	36,396	34,971	266.50%	-3.92%
February	9,380	38,529	34,397	266.71%	-10.72%
March	10,646	47,551	44,014	313.43%	-7.44%
April	8,139	46,114	43,481	434.23%	-5.71%
May	8,969	41,146	41,676	364.67%	1.29%
June	8,795	40,538	40,088	355.80%	-1.11%
July	9,592	43,268	42,659	344.74%	-1.41%
August	9,331	40,131	42,384	354.23%	5.61%
September	7,740	35,126	34,713	348.49%	-1.18%
October	9,005	38,373	35,855	298.17%	-6.56%
November	9,235	40,891	36,029	290.14%	-11.89%
December	10,114	42,783	36,139	257.32%	-15.53%
Total thru December	110,488	490,846	466,406	322.13%	-4.98%
Total for Year	110,488	490,846	466,406		

Total all current month	607,785	964,059	939,619
Total all for the year	222,628	988,143	939,619

BISHOP INTERNATIONAL AIRPORT AIR CARGO AND FREIGHT COMPARISON Pre-Authority(1987) 2010 & 2011

TOTAL AIR CARGO AND FREIGHT

	ENPLANED CARGO & FREIGHT			% Change 87-2011	% Change 2010-2011	DEPLANED CARGO & FREIGHT			% Change 87-2010	% Change 2010-2011
	1987	2010	2011			1987	2010	2011		
January	3,660	758,243	717,075	19492.21%	-5.43%	16,557	783,074	788,935	4664.96%	0.75%
February	3,582	612,518	732,862	20359.58%	19.65%	30,397	751,047	1,079,635	3451.78%	43.75%
March	4,268	716,316	968,925	22602.09%	35.27%	23,013	1,055,077	1,070,162	4550.25%	1.43%
April	3,747	958,471	715,890	19005.68%	-25.31%	30,094	986,548	905,313	2908.28%	-8.23%
May	3,219	825,928	672,616	20795.18%	-18.56%	28,459	954,339	1,055,984	3610.54%	10.65%
June	9,901	960,949	805,922	8039.80%	-16.13%	27,135	1,807,387	1,223,574	4409.21%	-32.30%
July	5,316	963,584	725,008	13538.22%	-24.76%	21,325	1,187,230	1,019,092	4678.86%	-14.16%
August	6,299	949,850	797,001	12552.82%	-16.09%	19,064	1,040,006	1,141,719	5888.87%	9.78%
September	6,509	1,037,188	795,054	12114.69%	-23.35%	23,494	1,182,308	1,072,235	4463.87%	-9.31%
October	7,148	988,588	797,619	11058.63%	-19.32%	26,707	1,046,737	1,110,252	4057.16%	6.07%
November	10,254	828,780	767,016	7380.16%	-7.45%	22,817	959,547	1,038,807	4452.78%	8.26%
December	3,905	813,370	788,901	20102.33%	-3.01%	19,423	1,097,213	1,169,387	5920.63%	6.58%
Total thru December	67,808	10,413,785	9,283,889	13591.44%	-10.85%	288,485	12,850,513	12,675,095	4293.68%	-1.37%
Annual Total	67,808	10,413,785	9,283,889			288,485	12,850,513	12,675,095		



FEDEX

	ENPLANED CARGO & FREIGHT					DEPLANED CARGO & FREIGHT				
	1987	2010	2011	% Change 87-2011	% Change 2010-2011	1987	2010	2011	% Change 87-2011	% Change 2010-2011
January	0	730,129	676,286	N/A	-7.37%	0	752,475	751,920	N/A	-0.07%
February	0	588,262	696,506	N/A	18.40%	0	717,276	981,435	N/A	36.83%
March	0	683,662	914,698	N/A	33.79%	0	1,036,554	1,042,312	N/A	0.56%
April	0	921,197	676,545	N/A	-26.56%	0	960,934	879,317	N/A	-8.49%
May	0	784,833	589,659	N/A	N/A	0	933,263	1,027,956	N/A	10.15%
June	0	916,178	744,393	N/A	-18.75%	0	944,453	1,148,644	N/A	21.62%
July	0	902,702	686,454	N/A	-23.96%	0	936,090	974,633	N/A	4.12%
August	0	906,445	719,150	N/A	-20.66%	0	1,011,040	1,079,369	N/A	6.76%
September	0	1,002,617	690,998	N/A	-31.08%	0	1,148,263	993,071	N/A	-13.52%
October	0	952,194	696,487	N/A	-26.85%	0	1,020,566	1,078,920	N/A	5.72%
November	0	791,184	735,912	N/A	-6.99%	0	935,082	1,004,847	N/A	7.46%
December	0	744,117	716,774	N/A	-3.67%	0	1,063,015	1,128,989	N/A	6.21%
Total thru December	0	9,923,520	8,543,862	N/A	-13.90%	0	11,459,011	12,091,413	N/A	5.52%

GVA

	ENPLANED CARGO & FREIGHT					DEPLANED CARGO & FREIGHT				
	1987	2010	2011	% Change 87-2011	% Change 2010-2011	1987	2010	2011	% Change 87-2011	% Change 2010-2011
January	0	0	7,375	N/A	N/A	0	10,968	5,618	N/A	-48.78%
February	0	0	0	N/A	N/A	0	17,485	77,542	N/A	343.48%
March	0	0	10,430	N/A	N/A	0	0	4,639	N/A	N/A
April	0	5,331	0	N/A	N/A	0	4,736	649	N/A	-86.30%
May	0	3,294	41,390	N/A	1156.53%	0	1,000	0	N/A	N/A
June	0	3,462	21,476	N/A	520.34%	0	840,595	40,581	N/A	-95.17%
July	0	20,304	0	N/A	N/A	0	225,332	21,155	N/A	-90.61%
August	0	5,342	38,791	N/A	626.15%	0	6,570	30,476	N/A	363.87%
September	0	552	57,245	N/A	10270.47%	0	10,731	52,815	N/A	392.17%
October	0	0	63,199	N/A	N/A	0	0	23	N/A	N/A
November	0	794	0	N/A	N/A	0	0	5,684	N/A	N/A
December	0	15,749	10,998	N/A	N/A	0	13,160	12,878	N/A	N/A
Total thru December	0	54,828	250,904	N/A	N/A	0	1,130,577	252,060	N/A	N/A

DELTA/ASA

	ENPLANED CARGO & FREIGHT					DEPLANED CARGO & FREIGHT				
	1987	2010	2011	% Change 87-2011	% Change 2010-2011	1987	2010	2011	% Change 87-2011	% Change 2010-2011
January	0	0	0	N/A	N/A	0	0	25	N/A	N/A
February	0	0	596	N/A	N/A	0	0	492	N/A	N/A
March	0	0	0	N/A	N/A	0	0	0	N/A	N/A
April	0	0	718	N/A	N/A	0	0	448	N/A	N/A
May	0	0	0	N/A	N/A	0	0	0	N/A	N/A
June	0	0	119	N/A	N/A	0	0	199	N/A	N/A
July	0	97	417	N/A	329.90%	0	623	255	N/A	-59.07%
August	0	61	269	N/A	340.98%	0	38	694	N/A	1726.32%
September	0	0	0	N/A	N/A	0	969	308	N/A	-68.21%
October	0	0	192	N/A	N/A	0	321	583	N/A	81.62%
November	0	314	143	N/A	-54.46%	0	195	330	N/A	69.23%
December	0	32	108	N/A	237.50%	0	511	432	N/A	-15.46%
Total thru December	0	504	2,562	N/A	N/A	0	2,657	3,766	N/A	N/A

AMERICAN EAGLE/CONN

	ENPLANED CARGO & FREIGHT					DEPLANED CARGO & FREIGHT				
	1987	2010	2011	% Change 87-2011	% Change 2010-2011	1987	2010	2011	% Change 87-2011	% Change 2010-2011
January	0	71	0	N/A	N/A	0	21	515	N/A	2352.38%
February	0	73	8	N/A	-89.04%	0	7	66	N/A	842.86%
March	0	83	0	N/A	N/A	0	44	92	N/A	109.09%
April	0	11	0	N/A	N/A	0	76	0	N/A	N/A
May	0	0	0	N/A	N/A	0	349	1,158	N/A	231.81%
June	0	0	0	N/A	N/A	0	274	0	N/A	N/A
July	0	0	0	N/A	N/A	0	0	0	N/A	N/A
August	0	0	0	N/A	N/A	0	0	662	N/A	N/A
September	0	0	0	N/A	N/A	0	426	0	N/A	N/A
October	0	0	0	N/A	N/A	0	369	0	N/A	N/A
November	0	0	0	N/A	N/A	0	638	0	N/A	N/A
December	0	0	0	N/A	N/A	0	464	0	N/A	N/A
Total thru December	0	238	8	N/A	N/A	0	2,668	2,493	N/A	-6.56%

Northwest

	ENPLANED CARGO & FREIGHT					DEPLANED CARGO & FREIGHT				
	1987	2010	2011	% Change 87-2011	% Change 2010-2011	1987	2010	2011	% Change 87-2011	% Change 2010-2011
January	120	278	0	-100.00%	N/A	837	1,477	0	-100.00%	N/A
February	310	0	0	-100.00%	N/A	1,649	0	0	-100.00%	N/A
March	256	0	0	-100.00%	N/A	2,098	0	0	-100.00%	N/A
April	0	0	0	-100.00%	N/A	0	0	0	-100.00%	N/A
May	0	0	0	-100.00%	N/A	0	0	0	-100.00%	N/A
June	0	0	0	-100.00%	N/A	0	0	0	-100.00%	N/A
July	0	0	0	-100.00%	N/A	0	0	0	-100.00%	N/A
August	0	0	0	-100.00%	N/A	0	0	0	-100.00%	N/A
September	0	0	0	-100.00%	N/A	0	0	0	-100.00%	N/A
October	0	0	0	-100.00%	N/A	0	0	0	-100.00%	N/A
November	0	0	0	-100.00%	N/A	0	0	0	-100.00%	N/A
December	0	0	0	-100.00%	N/A	0	0	0	-100.00%	N/A
Total thru December	686	278	0	-100.00%	-100.00%	4,584	1,477	0	-100.00%	N/A

FRONTIER AIRLINES

	ENPLANED CARGO & FREIGHT					DEPLANED CARGO & FREIGHT				
	1987	2010	2011	% Change 87-2011	% Change 2010-2011	1987	2010	2011	% Change 87-2011	% Change 2010-2011
January	0	0	0	N/A	N/A	0	0	0	N/A	N/A
February	0	0	0	N/A	N/A	0	1	100	N/A	N/A
March	0	0	0	N/A	N/A	0	3	27	N/A	800.00%
April	0	0	0	N/A	N/A	0	0	21	N/A	N/A
May	0	0	0	N/A	N/A	0	0	85	N/A	N/A
June	0	0	0	N/A	N/A	0	94	14	N/A	-85.11%
July	0	0	0	N/A	N/A	0	0	35	N/A	N/A
August	0	0	0	N/A	N/A	0	43	42	N/A	-2.33%
September	0	0	0	N/A	N/A	0	40	0	N/A	N/A
October	0	0	0	N/A	N/A	0	0	0	N/A	N/A
November	0	0	0	N/A	N/A	0	46	36	N/A	N/A
December	0	0	0	N/A	N/A	0	59	62	N/A	N/A
Total thru December	0	0	0	N/A	N/A	0	286	422	N/A	47.55%

MOUNTAIN AIR CARGO

	ENPLANED CARGO & FREIGHT					DEPLANED CARGO & FREIGHT				
	1987	2010	2011	% Change 87-2011	% Change 2010-2011	1987	2010	2011	% Change 87-2011	% Change 2010-2011
January	0	0	0	N/A	N/A	0	0	0	N/A	N/A
February	0	0	0	N/A	N/A	0	0	0	N/A	N/A
March	0	0	0	N/A	N/A	0	0	0	N/A	N/A
April	0	0	0	N/A	N/A	0	0	0	N/A	N/A
May	0	0	0	N/A	N/A	0	0	0	N/A	N/A
June	0	0	0	N/A	N/A	0	0	0	N/A	N/A
July	0	0	0	N/A	N/A	0	0	0	N/A	N/A
August	0	0	0	N/A	N/A	0	0	0	N/A	N/A
September	0	0	0	N/A	N/A	0	0	0	N/A	N/A
October	0	0	0	N/A	N/A	0	0	0	N/A	N/A
November	0	0	0	N/A	N/A	0	600	0	N/A	N/A
December	0	0	0	N/A	N/A	0	0	0	N/A	N/A
Total thru December	0	0	0	N/A	N/A	0	600	0	N/A	N/A

CSA Air, Inc.

	ENPLANED CARGO & FREIGHT					DEPLANED CARGO & FREIGHT				
	1987	2010	2011	% Change 87-2011	% Change 2010-2011	1987	2010	2011	% Change 87-2011	% Change 2010-2011
January	0	27,765	33,414	N/A	N/A	0	18,133	30,857	N/A	N/A
February	0	24,183	35,752	N/A	47.84%	0	16,278	20,000	N/A	22.87%
March	0	32,571	43,797	N/A	34.47%	0	18,476	23,092	N/A	24.98%
April	0	31,932	38,627	N/A	20.97%	0	20,802	24,878	N/A	19.59%
May	0	37,801	41,567	N/A	9.96%	0	19,727	26,785	N/A	35.78%
June	0	41,309	39,934	N/A	-3.33%	0	21,971	34,136	N/A	55.37%
July	0	40,481	38,137	N/A	-5.79%	0	25,185	23,014	N/A	-8.62%
August	0	38,002	38,791	N/A	2.08%	0	22,315	30,476	N/A	36.57%
September	0	34,019	46,811	N/A	37.60%	0	21,879	26,041	N/A	19.02%
October	0	36,394	37,741	N/A	3.70%	0	25,481	30,726	N/A	20.58%
November	0	36,488	30,961	N/A	-15.15%	0	22,986	27,910	N/A	21.42%
December	0	53,472	61,021	N/A	14.12%	0	20,004	27,026	N/A	35.10%
Total thru December	0	434,417	486,553	N/A	12.00%	0	253,237	324,941	N/A	28.31%

SOUTHWEST/AIRTRAN

	ENPLANED CARGO & FREIGHT					DEPLANED CARGO & FREIGHT					
	1987	2010	2011	% Change 87-2011	% Change 2010-2011	1987	2010	2011	% Change 87-2011	% Change 2010-2011	
January	0	0	0	0	N/A	N/A	0	0	0	N/A	N/A
February	0	0	0	0	N/A	N/A	0	0	0	N/A	N/A
March	0	0	0	0	N/A	N/A	0	0	0	N/A	N/A
April	0	0	0	0	N/A	N/A	0	0	0	N/A	N/A
May	0	0	0	0	N/A	N/A	0	0	0	N/A	N/A
June	0	0	0	0	N/A	N/A	0	0	0	N/A	N/A
July	0	0	0	0	N/A	N/A	0	0	0	N/A	N/A
August	0	0	0	0	N/A	N/A	0	0	0	N/A	N/A
September	0	0	0	0	N/A	N/A	0	0	0	N/A	N/A
October	0	0	0	0	N/A	N/A	0	0	0	N/A	N/A
November	0	0	0	0	N/A	N/A	0	0	0	N/A	N/A
December	0	0	0	0	N/A	N/A	0	0	0	N/A	N/A
Total thru December	0	0	0	0	N/A	N/A	0	0	0	N/A	N/A

PRIOR CARRIERS

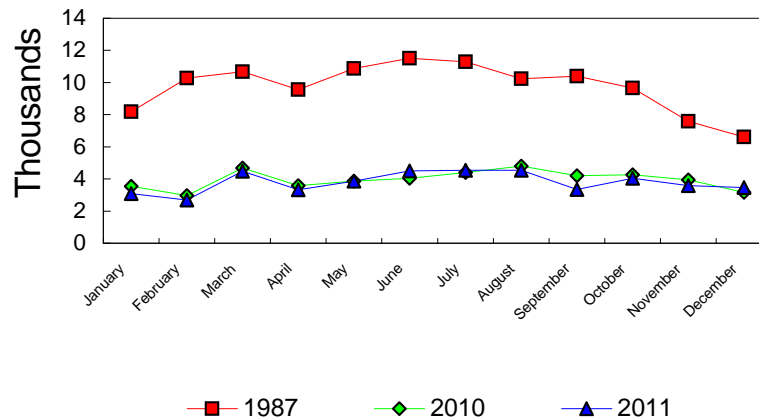
	ENPLANED CARGO & FREIGHT					DEPLANED CARGO & FREIGHT					
	1987	2010	2011	% Change 87-2011	% Change 2010-2011	1987	2010	2011	% Change 87-2011	% Change 2010-2011	
January	3,540	0	0	0	N/A	N/A	15,720	0	0	N/A	N/A
February	3,272	0	0	0	N/A	N/A	28,748	0	0	N/A	N/A
March	4,012	0	0	0	N/A	N/A	20,915	0	0	N/A	N/A
April	3,747	0	0	0	N/A	N/A	30,094	0	0	N/A	N/A
May	3,219	0	0	0	N/A	N/A	28,459	0	0	N/A	N/A
June	9,901	0	0	0	N/A	N/A	27,135	0	0	N/A	N/A
July	5,316	0	0	0	N/A	N/A	21,325	0	0	N/A	N/A
August	6,299	0	0	0	N/A	N/A	19,064	0	0	N/A	N/A
September	6,509	0	0	0	N/A	N/A	23,494	0	0	N/A	N/A
October	7,148	0	0	0	N/A	N/A	26,707	0	0	N/A	N/A
November	10,254	0	0	0	N/A	N/A	22,817	0	0	N/A	N/A
December	3,905	0	0	0	N/A	N/A	19,423	0	0	N/A	N/A
Total thru December	67,122	0	0	0	N/A	N/A	283,901	0	0	N/A	N/A

OPERATIONS STATISTICAL COMPARISON

FOR YEARS 1987, 2009 & 2010

	1987 OPERATIONS	2010 OPERATIONS	2011 OPERATIONS	CHANGE 1987/2011	CHANGE 2010/2011
January	8,177	3,547	3,092	-62.19%	-12.83%
February	10,270	2,968	2,697	-73.74%	-9.13%
March	10,677	4,671	4,490	-57.95%	-3.87%
April	9,562	3,586	3,323	-65.25%	-7.33%
May	10,870	3,864	3,869	-64.41%	0.13%
June	11,514	4,038	4,503	-60.89%	11.52%
July	11,296	4,403	4,544	-59.77%	3.20%
August	10,240	4,799	4,534	-55.72%	-5.52%
September	10,389	4,194	3,355	-67.71%	-20.00%
October	9,656	4,261	4,051	-58.05%	-4.93%
November	7,592	3,939	3,590	-52.71%	-8.86%
December	6,608	3,161	3,471	-47.47%	9.81%
Total Through December	116,851	47,431	45,519	-61.05%	-4.03%
ANNUAL TOTAL	116,851	47,431	45,519		

OPERATIONS Pre-Authority vs 2010 & 2011



**BISHOP INTERNATIONAL AIRPORT
AIR TRAFFIC RECORD 2011**

MONTH	ITINERANT AIRCRAFT					LOCAL AIRCRAFT			TOTAL OPERATIONS	CUMULATIVE OPERATIONS
	AIR CARRIER	AIR TAXI	GENERAL AVIATION	MILITARY	TOTAL ITINERANT	CIVILIAN	MILITARY	TOTAL LOCAL		
JANUARY	578	957	895	8	2,438	654	0	654	3,092	3,092
FEBRUARY	578	792	832	7	2,209	488	0	488	2,697	5,789
MARCH	663	1,024	1,398	11	3,096	1,384	10	1,394	4,490	10,279
APRIL	642	997	1,006	30	2,675	648	0	648	3,323	13,602
MAY	632	1,137	1,150	12	2,931	938	0	938	3,869	17,471
JUNE	577	1,036	1,525	20	3,158	1,345	0	1,345	4,503	21,974
JULY	591	1,030	1,684	23	3,328	1,216	0	1,216	4,544	26,518
AUGUST	618	1,064	1,769	17	3,468	1,066	0	1,066	4,534	31,052
SEPTEMBER	537	950	1,160	46	2,693	656	6	662	3,355	34,407
OCTOBER	556	920	1,398	38	2,912	1,139	0	1,139	4,051	38,458
NOVEMBER	577	867	1,112	2	2,558	1,032	0	1,032	3,590	42,048
DECEMBER	572	897	1,238	10	2,717	754	0	754	3,471	45,519
TOTALS	7,121	11,671	15,167	224	34,183	11,320	16	11,336	45,519	