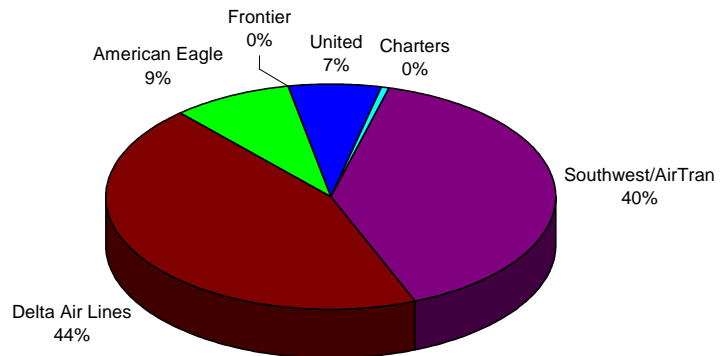


**BISHOP INTERNATIONAL AIRPORT AUTHORITY
AIRLINE PASSENGER COMPARISON
CALENDAR YEARS 2012 AND 2013**

ENPLANEMENTS	SOUTHWEST/AIRTRAN			DELTA			AMERICAN EAGLE		
	2012	2013	% Change	2012	2013	% Change	2012	2013	% Change
January	13,010	10,849	-16.61%	12,701	14,637	15.24%	3,130	3,081	-1.57%
February	16,359	12,708	-22.32%	14,091	15,000	6.45%	3,084	2,845	-7.75%
March	19,015	16,276	-14.40%	16,894	14,790	-12.45%	3,247	2,745	-15.46%
April	11,816			14,698			3,167		
May	11,584			15,353			3,359		
June	13,597			15,114			3,298		
July	15,027			16,277			3,492		
August	12,285			17,936			3,552		
September	8,240			15,093			3,238		
October	9,370			16,707			3,396		
November	12,578			15,784			3,137		
December	12,609			13,870			3,154		
Through March	48,384	39,833	-17.67%	43,686	44,427	1.70%	9,461	8,671	-8.35%

ENPLANEMENTS	FRONTIER			UNITED			CHARTERS		
	2012	2013	% Change	2012	2013	% Change	2012	2013	% Change
January	1,252	0	N/A	1,418	2,080	46.69%	158	0	N/A
February	1,016	0		1,700	2,155	26.76%	0	265	N/A
March	283	0		1,937	2,555	31.91%	0	158	N/A
April	0			1,960			0		
May	0			2,880			136		
June	0			3,222			0		
July	0			3,015			0		
August	0			3,150			156		
September	0			2,646			0		
October	0			2,901			145		
November	0			2,498			152		
December	0			1,789			0		
Through March	2,551	0	N/A	5,055	6,790	34.32%	158	423	N/A

**ENPLANEMENT SHARE BY AIRLINE
Calendar Year 2013**



	TOTAL		% Change
	2012	2013	
January	31,669	30,647	-3.23%
February	36,250	32,973	-9.04%
March	41,376	36,524	-11.73%
April	31,641	0	
May	33,312	0	
June	35,231	0	
July	37,811	0	
August	37,079	0	
September	29,217	0	
October	32,519	0	
November	34,149	0	
December	31,422	0	
Through March	109,295	100,144	-8.37%
Total Year	411,676	100,144	

■ Southwest/AirTran
 ■ Delta Air Lines
 ■ American Eagle
■ Frontier
 ■ United
 ■ Charters

**BISHOP INTERNATIONAL AIRPORT AUTHORITY
AIRLINE LOAD FACTOR ANALYSIS**

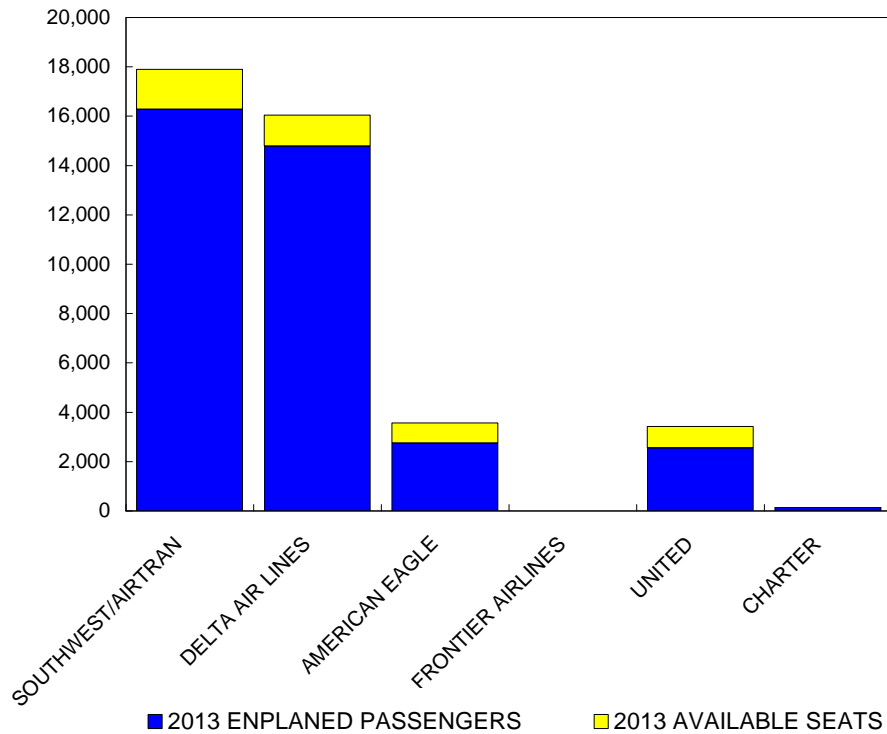
March-13

2012

2013

AIRLINE	AVAILABLE SEATS	ENPLANED PAX	LOAD FACTOR	AVAILABLE SEATS	ENPLANED PAX	LOAD FACTOR
SOUTHWEST/AIRTRAN	21,822	19,015	87.14%	17,901	16,276	90.92%
DELTA AIR LINES	22,025	16,894	76.70%	16,049	14,790	92.16%
AMERICAN EAGLE	3,702	3,247	87.71%	3,564	2,745	77.02%
FRONTIER AIRLINES	600	283	47.17%	0	0	0.00%
UNITED	2,468	1,937	78.48%	3,430	2,555	74.49%
CHARTER	0	0	N/A	162	158	97.53%
ALL AIRLINES	50,617	41,376	81.74%	41,106	36,524	88.85%

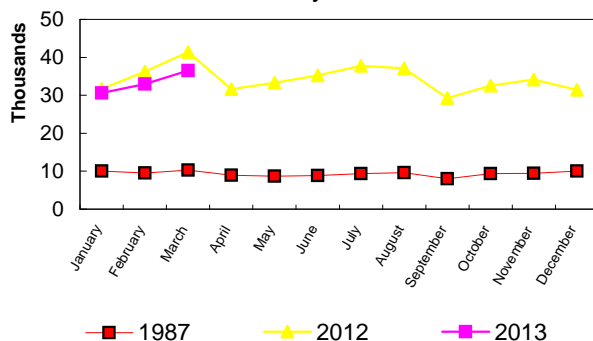
**Enplanements vs Available Seats
Current Month**



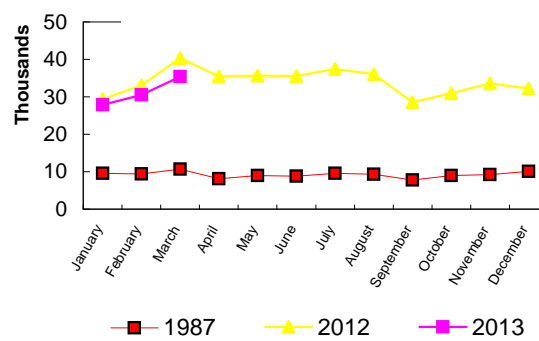
**BISHOP INTERNATIONAL AIRPORT
PASSENGER STATISTICAL COMPARISON
FOR THE YEARS 1987, 2012, 2013**

	ENPLANED PASSENGERS			% CHANGE	% CHANGE
	1987	2012	2013	1987/2013	2012/2013
January	10,008	31,669	30,647	206.23%	-3.23%
February	9,544	36,250	32,973	245.48%	-9.04%
March	10,287	41,376	36,524	255.05%	-11.73%
April	8,967	31,641			
May	8,685	33,312			
June	8,891	35,231			
July	9,372	37,811			
August	9,586	37,079			
September	8,038	29,217			
October	9,350	32,519			
November	9,402	34,149			
December	10,010	31,422			
Total thru March	29,839	109,295	100,144	235.61%	-8.37%
Total for Year	112,140	411,676	100,144		

ENPLANEMENT COMPARISON
Pre-Authority vs 2012 & 2013



DEPLANEMENT COMPARISON
Pre-Authority vs 2012 & 2013



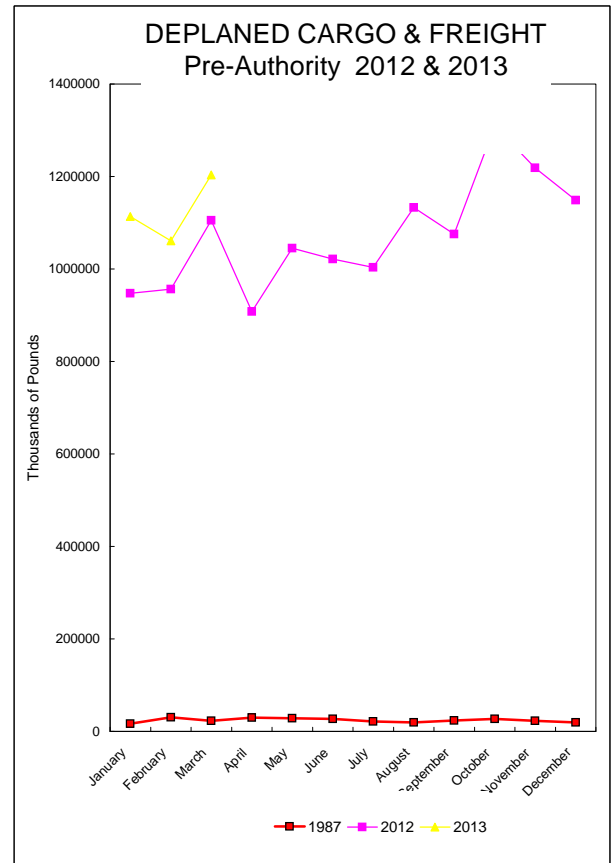
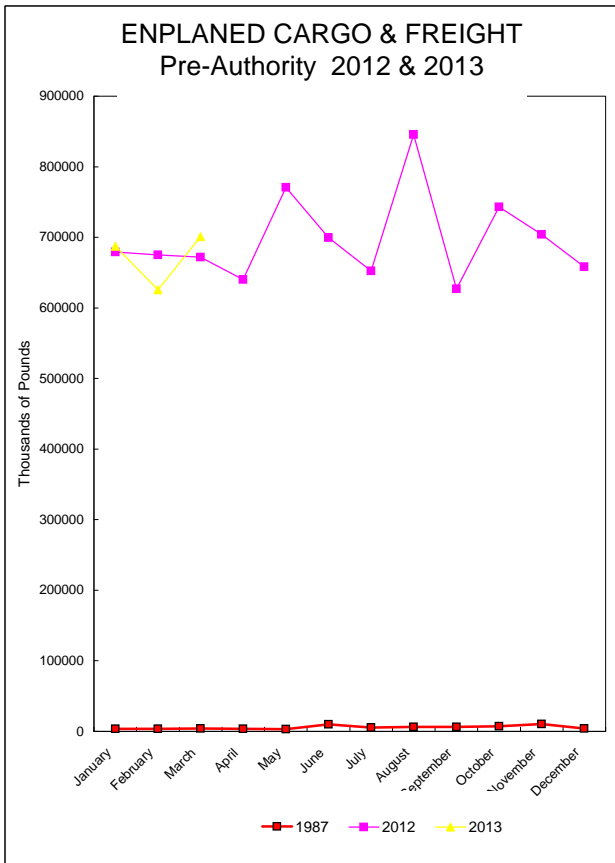
	DEPLANED PASSENGERS			% CHANGE	% CHANGE
	1987	2012	2013	1987/2013	2012/2013
January	9,542	29,441	27,892	192.31%	-5.26%
February	9,380	33,050	30,477	224.91%	-7.79%
March	10,646	40,321	35,406	232.58%	-12.19%
April	8,139	35,493			
May	8,969	35,683			
June	8,795	35,541			
July	9,592	37,420			
August	9,331	36,058			
September	7,740	28,583			
October	9,005	30,968			
November	9,235	33,618			
December	10,114	32,246			
Total thru March	29,568	102,812	93,775	217.15%	-8.79%
Total for Year	110,488	408,422	93,775		

Total all current month	59,407	212,107	193,919
Total all for the year	222,628	820,098	193,919

BISHOP INTERNATIONAL AIRPORT AIR CARGO AND FREIGHT COMPARISON Pre-Authority(1987) 2012 & 2013

TOTAL AIR CARGO AND FREIGHT

	ENPLANED CARGO & FREIGHT			% Change 87-2013	% Change 2012-2013	DEPLANED CARGO & FREIGHT			% Change 87-2013	% Change 2012-2013
	1987	2012	2013			1987	2012	2013		
January	3,660	679,116	687,353	18680.14%	1.21%	16,557	947,207	1,113,247	6623.72%	17.53%
February	3,582	674,955	625,624	17365.77%	-7.31%	30,397	956,307	1,061,183	3391.08%	10.97%
March	4,268	671,953	701,143	16327.91%	4.34%	23,013	1,105,392	1,203,524	5129.76%	8.88%
April	3,747	640,419				30,094	908,072			
May	3,219	771,005				28,459	1,045,167			
June	9,901	699,389				27,135	1,021,289			
July	5,316	652,308				21,325	1,003,411			
August	6,299	845,386				19,064	1,133,077			
September	6,509	627,102				23,494	1,075,660			
October	7,148	743,116				26,707	1,309,254			
November	10,254	704,277				22,817	1,218,743			
December	3,905	658,228				19,423	1,148,556			
Total thru March	7,498	2,026,024	2,014,120	26762.10%	-0.59%	49,052	3,008,906	3,377,954	6786.48%	12.27%
Annual Total	67,808	8,367,254	2,014,120			288,485	12,872,135	3,377,954		



FEDEX

	ENPLANED CARGO & FREIGHT					DEPLANED CARGO & FREIGHT				
	1987	2012	2013	% Change 87-2013	% Change 2012-2013	1987	2012	2013	% Change 87-2013	% Change 2012-2013
January	0	642,380	650,713	N/A	1.30%	0	924,102	1,090,803	N/A	18.04%
February	0	608,632	591,682	N/A	-2.78%	0	933,983	1,042,521	N/A	11.62%
March	0	632,032	665,983	N/A	5.37%	0	1,076,209	1,180,073	N/A	9.65%
April	0	603,006				0	881,605			
May	0	729,180				0	1,013,981			
June	0	657,163				0	989,788			
July	0	609,695				0	976,116			
August	0	793,413				0	1,102,618			
September	0	592,389				0	1,050,894			
October	0	705,983				0	1,276,318			
November	0	670,741				0	1,192,072			
December	0	607,127				0	1,123,427			
Total thru March	0	1,883,044	1,908,378	N/A	1.35%	0	2,934,294	3,313,397	N/A	12.92%

GVA

	ENPLANED CARGO & FREIGHT					DEPLANED CARGO & FREIGHT				
	1987	2012	2013	% Change 87-2013	% Change 2012-2013	1987	2012	2013	% Change 87-2013	% Change 2012-2013
January	0	0	0	N/A	N/A	0	0	0	N/A	N/A
February	0	31,877	0	N/A	N/A	0	379	0	N/A	N/A
March	0	64	0	N/A	N/A	0	725	0	N/A	N/A
April	0	0				0	0			
May	0	0				0	0			
June	0	0				0	0			
July	0	0				0	0			
August	0	0				0	0			
September	0	0				0	0			
October	0	0				0	0			
November	0	0				0	0			
December	0	0				0	0			
Total thru March	0	31,941	0	N/A	N/A	0	1,104	0	N/A	N/A

DELTA/ASA

	ENPLANED CARGO & FREIGHT					DEPLANED CARGO & FREIGHT				
	1987	2012	2013	% Change 87-2013	% Change 2012-2013	1987	2012	2013	% Change 87-2013	% Change 2012-2013
January	0	119	23	N/A	N/A	0	798	283	N/A	-64.54%
February	0	203	20	N/A	N/A	0	1,195	275	N/A	-76.99%
March	0	334	0	N/A	N/A	0	1,258	0	N/A	N/A
April	0	130				0	627			
May	0	256				0	626			
June	0	0				0	713			
July	0	224				0	372			
August	0	406				0	935			
September	0	383				0	1,080			
October	0	144				0	486			
November	0	317				0	405			
December	0	161				0	271			
Total thru March	0	656	43	N/A	N/A	0	3,251	558	N/A	N/A

AMERICAN EAGLE/CONN

	ENPLANED CARGO & FREIGHT					DEPLANED CARGO & FREIGHT				
	1987	2012	2013	% Change 87-2013	% Change 2012-2013	1987	2012	2013	% Change 87-2013	% Change 2012-2013
January	0	0	0	0	N/A	0	642	516	N/A	-19.63%
February	0	0	0	N/A	N/A	0	216	218	N/A	0.93%
March	0	0	0	N/A	N/A	0	325	427	N/A	31.38%
April	0	0				0	338			
May	0	0				0	307			
June	0	0				0	733			
July	0	0				0	89			
August	0	0				0	0			
September	0	0				0	141			
October	0	0				0	176			
November	0	0				0	183			
December	0	0				0	313			
Total thru March	0	0	0	N/A	N/A	0	1,183	1,161	N/A	-1.86%

Northwest

	ENPLANED CARGO & FREIGHT					DEPLANED CARGO & FREIGHT				
	1987	2012	2013	% Change 87-2013	% Change 2012-2013	1987	2012	2013	% Change 87-2013	% Change 2012-2013
January	120	0	0	N/A	N/A	837	0	0	N/A	N/A
February	310	0	0	N/A	N/A	1,649	0	0	N/A	N/A
March	256	0	0	N/A	N/A	2,098	0	0	N/A	N/A
April	0	0				0	0			
May	0	0				0	0			
June	0	0				0	0			
July	0	0				0	0			
August	0	0				0	0			
September	0	0				0	0			
October	0	0				0	0			
November	0	0				0	0			
December	0	0				0	0			
Total thru March	686	0	0	-100.00%	N/A	4,584	0	0	-100.00%	N/A

FRONTIER AIRLINES

	ENPLANED CARGO & FREIGHT					DEPLANED CARGO & FREIGHT				
	1987	2012	2013	% Change 87-2013	% Change 2012-2013	1987	2012	2013	% Change 87-2013	% Change 2012-2013
January	0	0	0	N/A	N/A	0	20	0	N/A	N/A
February	0	0	0	N/A	N/A	0	36	0	N/A	N/A
March	0	0	0	N/A	N/A	0	0	0	N/A	N/A
April	0	0				0	0			
May	0	0				0	0			
June	0	0				0	0			
July	0	0				0	0			
August	0	0				0	0			
September	0	0				0	0			
October	0	0				0	0			
November	0	0				0	0			
December	0	0				0	0			
Total thru March	0	0	0	N/A	N/A	0	56	0	N/A	-100.00%

CSA Air, Inc.

	ENPLANED CARGO & FREIGHT					DEPLANED CARGO & FREIGHT				
	1987	2012	2013	% Change 87-2013	% Change 2012-2013	1987	2012	2013	% Change 87-2013	% Change 2012-2013
January	0	36,617	36,617	N/A	0.00%	0	21,645	21,645	N/A	0.00%
February	0	34,243	33,922	N/A	-0.94%	0	20,498	18,169	N/A	-11.36%
March	0	39,523	35,160	N/A	-11.04%	0	26,875	23,024	N/A	-14.33%
April	0	37,283				0	25,502			
May	0	41,569				0	30,253			
June	0	42,226				0	30,055			
July	0	42,389				0	26,834			
August	0	51,567				0	29,524			
September	0	34,330				0	23,545			
October	0	36,989				0	32,274			
November	0	33,219				0	26,083			
December	0	50,940				0	24,545			
Total thru March	0	110,383	105,699	N/A	-4.24%	0	69,018	62,838	N/A	-8.95%

SOUTHWEST/AIRTRAN

	ENPLANED CARGO & FREIGHT					DEPLANED CARGO & FREIGHT				
	1987	2012	2013	% Change 87-2013	% Change 2012-2013	1987	2012	2013	% Change 87-2013	% Change 2012-2013
January	0	0	0	N/A	N/A	0	0	0	N/A	N/A
February	0	0	0	N/A	N/A	0	0	0	N/A	N/A
March	0	0	0	N/A	N/A	0	0	0	N/A	N/A
April	0	0				0	0			
May	0	0				0	0			
June	0	0				0	0			
July	0	0				0	0			
August	0	0				0	0			
September	0	0				0	0			
October	0	0				0	0			
November	0	0				0	0			
December	0	0				0	0			
Total thru March	0	0	0	N/A	N/A	0	0	0	N/A	N/A

PRIOR CARRIERS

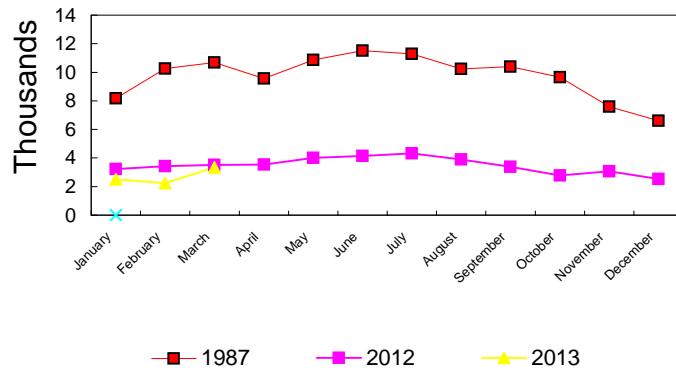
	ENPLANED CARGO & FREIGHT					DEPLANED CARGO & FREIGHT				
	1987	2012	2013	% Change 87-2013	% Change 2012-2013	1987	2012	2013	% Change 87-2013	% Change 2012-2013
January	3,540	0	0	N/A	N/A	15,720	0	0	N/A	N/A
February	3,272	0	0	N/A	N/A	28,748	0	0	N/A	N/A
March	4,012	0	0	N/A	N/A	20,915	0	0	N/A	N/A
April	3,747	0				30,094	0			
May	3,219	0				28,459	0			
June	9,901	0				27,135	0			
July	5,316	0				21,325	0			
August	6,299	0				19,064	0			
September	6,509	0				23,494	0			
October	7,148	0				26,707	0			
November	10,254	0				22,817	0			
December	3,905	0				19,423	0			
Total thru March	6,812	0	0	N/A	N/A	44,468	0	0	N/A	N/A

OPERATIONS STATISTICAL COMPARISON

FOR YEARS 1987, 2012 & 2013

	1987 OPERATIONS	2012 OPERATIONS	2013 OPERATIONS	CHANGE 1987/2013	CHANGE 2012/2013
January	8,177	3,229	2,514	-69.26%	-22.14%
February	10,270	3,427	2,249	-78.10%	-34.37%
March	10,677	3,510	3,342	-68.70%	-4.79%
April	9,562	3,546			
May	10,870	4,010			
June	11,514	4,150			
July	11,296	4,334			
August	10,240	3,901			
September	10,389	3,383			
October	9,656	2,770			
November	7,592	3,063			
December	6,608	2,535			
Total Through March	29,124	10,166	8,105	-72.17%	-20.27%
ANNUAL TOTAL	116,851	41,858	8,105		

OPERATIONS Pre-Authority vs 2012 & 2013



**BISHOP INTERNATIONAL AIRPORT
AIR TRAFFIC RECORD 2013**

MONTH	ITINERANT AIRCRAFT					LOCAL AIRCRAFT			TOTAL OPERATIONS	CUMULATIVE OPERATIONS
	AIR CARRIER	AIR TAXI	GENERAL AVIATION	MILITARY	TOTAL ITINERANT	CIVILIAN	MILITARY	TOTAL LOCAL		
JANUARY	433	661	890	2	1,986	528	0	528	2,514	2,514
FEBRUARY	446	655	770	2	1,873	376	0	376	2,249	2,249
MARCH	531	743	1,371	3	2,648	694	0	694	3,342	3,342
APRIL					0				0	0
MAY					0				0	0
JUNE					0				0	0
JULY					0				0	0
AUGUST					0				0	0
SEPTEMBER					0				0	0
OCTOBER					0				0	0
NOVEMBER					0				0	0
DECEMBER					0				0	0
TOTALS	1,410	2,059	3,031	7	6,507	1,598	0	1,598	8,105	