

**BISHOP INTERNATIONAL AIRPORT AUTHORITY  
AIRLINE PASSENGER COMPARISON  
CALENDAR YEARS 2009 AND 2010**

ENPLANEMENTS	NORTHWEST/MESABA			AIRTRAN AIRWAYS			DELTA			AMERICAN EAGLE		
	2009	2010	% Change	2009	2010	% Change	2009	2010	% Change	2009	2010	% Change
January	8,023	0	N/A	17,933	18,533	3.35%	6,764	15,247	125.41%	3,364	3,093	-8.06%
February	7,456	0	N/A	18,386	19,181	4.32%	7,379	15,468	109.62%	3,283	3,333	1.52%
March	9,003	0	N/A	19,419	20,839	7.31%	8,861	18,776	111.89%	3,462	3,524	1.79%
April	7,254	0	N/A	16,913	17,983	6.33%	8,470	17,126	102.20%	3,581	3,284	-8.29%
May	7,707			12,933			7,764			3,648		
June	8,316			14,002			9,475			3,752		
July	10,885			15,923			10,112			3,978		
August	9,893			16,231			9,870			3,631		
September	8,689			12,804			8,157			3,247		
October	8,565			16,129			9,570			3,710		
November	8,041			17,397			7,834			3,517		
December	8,444			18,776			7,435			3,032		
Through April	31,736	0	-100.00%	72,651	76,536	5.35%	31,474	66,617	111.66%	13,690	13,234	-3.33%

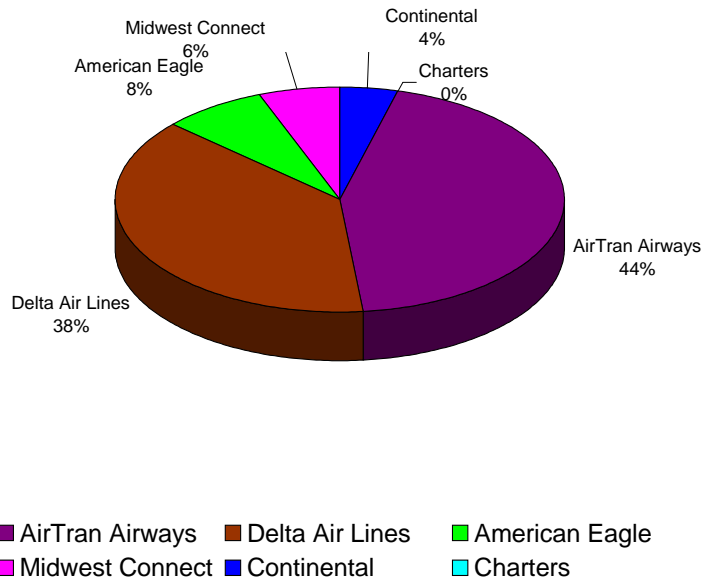
ENPLANEMENTS	MIDWEST CONNECT			CONTINENTAL			CHARTERS		
	2009	2010	% Change	2009	2010	% Change	2009	2010	% Change
January	1,527	2,326	52.32%	1,227	1,452	18.34%	151	0	-100.00%
February	1,692	2,302	36.05%	1,630	1,837	12.70%	0	148	N/A
March	1,852	2,533	36.77%	1,944	2,120	9.05%	0	0	N/A
April	2,115	2,554	20.76%	1,848	1,846	-0.11%	159	0	N/A
May	2,281			1,526			0		
June	2,499			1,753			0		
July	2,533			2,088			0		
August	2,652			2,084			0		
September	2,308			1,618			161		
October	2,231			1,584			0		
November	2,571			1,713			0		
December	2,311			2,024			0		
Through April	7,186	9,715	35.19%	6,649	7,255	9.11%	310	148	N/A

Latest Stats.\*\*      Nov    Jan-Nov 2009  
National avg.        2.07%    -5.52%  
Bishop Airport      7.43%    -7.73%

**ENPLANEMENT SHARE BY AIRLINE  
Calendar Year 2010**

\*\* RITA Bureau of Transportation Statistics

	2009	TOTAL 2010	% Change
January	38,989	40,651	4.26%
February	39,826	42,269	6.13%
March	44,541	47,792	7.30%
April	40,340	42,793	6.08%
May	35,859	0	
June	39,797	0	
July	45,519	0	
August	44,361	0	
September	36,984	0	
October	41,789	0	
November	41,073	0	
December	42,022	0	
Through April	163,696	173,505	5.99%
Total Year	491,100	173,505	



**BISHOP INTERNATIONAL AIRPORT AUTHORITY  
AIRLINE LOAD FACTOR ANALYSIS**

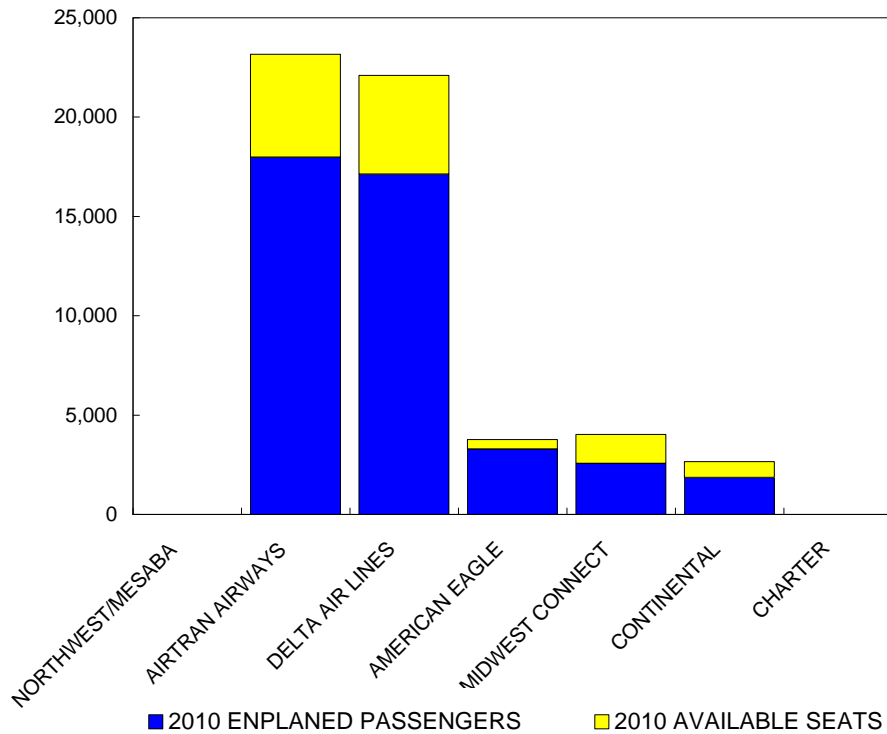
4/1/2010

2009

2010

AIRLINE	AVAILABLE SEATS	ENPLANED PAX	LOAD FACTOR	AVAILABLE SEATS	ENPLANED PAX	LOAD FACTOR
NORTHWEST/MESABA	11,963	7,254	60.64%	0	0	N/A
AIRTRAN AIRWAYS	21,060	16,913	80.31%	23,157	17,983	77.66%
DELTA AIR LINES	11,036	8,470	76.75%	22,097	17,126	77.50%
AMERICAN EAGLE	3,977	3,581	90.04%	3,762	3,284	87.29%
MIDWEST CONNECT	4,100	2,115	51.59%	4,022	2,554	63.50%
CONTINENTAL	2,997	1,848	61.66%	2,664	1,846	69.29%
CHARTER	163	159	97.55%	0	0	N/A
<b>ALL AIRLINES</b>	<b>55,296</b>	<b>40,340</b>	<b>72.95%</b>	<b>55,702</b>	<b>42,793</b>	<b>76.82%</b>

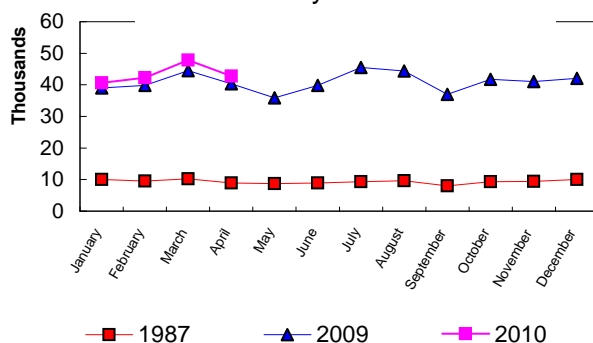
**Enplanements vs Available Seats  
Current Month**



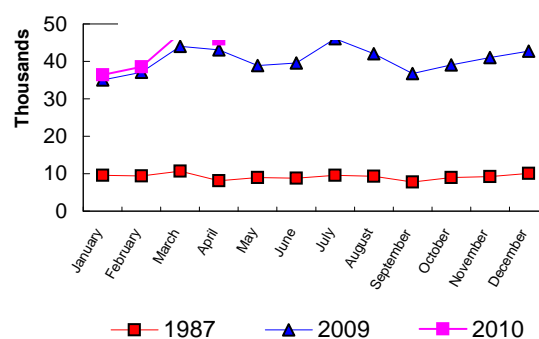
**BISHOP INTERNATIONAL AIRPORT  
PASSENGER STATISTICAL COMPARISON  
FOR THE YEARS 1987, 2009, 2010**

	<b>ENPLANED PASSENGERS</b>			<b>% CHANGE</b>	<b>% CHANGE</b>
	1987	2009	2010	1987/2010	2009/2010
January	10,008	38,989	40,651	306.19%	4.26%
February	9,544	39,826	42,269	342.89%	6.13%
March	10,287	44,541	47,792	364.59%	7.30%
April	8,967	40,340	42,793	377.23%	6.08%
May	8,685	35,859			
June	8,891	39,797			
July	9,372	45,519			
August	9,586	44,361			
September	8,038	36,984			
October	9,350	41,789			
November	9,402	41,073			
December	10,010	42,022			
<b>Total thru April</b>	<b>38,806</b>	<b>163,696</b>	<b>173,505</b>	<b>347.11%</b>	<b>5.99%</b>
<b>Total for Year</b>	<b>112,140</b>	<b>491,100</b>	<b>173,505</b>		

**ENPLANEMENT COMPARISON  
Pre-Authority vs 2009 & 2010**



**DEPLANEMENT COMPARISON  
Pre-Authority vs 2009 & 2010**



	<b>DEPLANED PASSENGERS</b>			<b>% CHANGE</b>	<b>% CHANGE</b>
	1987	2009	2010	1987/2010	2009/2010
January	9,542	35,013	36,396	281.43%	3.95%
February	9,380	37,122	38,529	310.76%	3.79%
March	10,646	43,994	47,551	346.66%	8.09%
April	8,139	43,119	45,957	464.65%	6.58%
May	8,969	38,854			
June	8,795	39,569			
July	9,592	46,075			
August	9,331	42,012			
September	7,740	36,714			
October	9,005	39,097			
November	9,235	41,005			
December	10,114	42,724			
<b>Total thru April</b>	<b>37,707</b>	<b>159,248</b>	<b>168,433</b>	<b>346.69%</b>	<b>5.77%</b>
<b>Total for Year</b>	<b>110,488</b>	<b>485,298</b>	<b>168,433</b>		

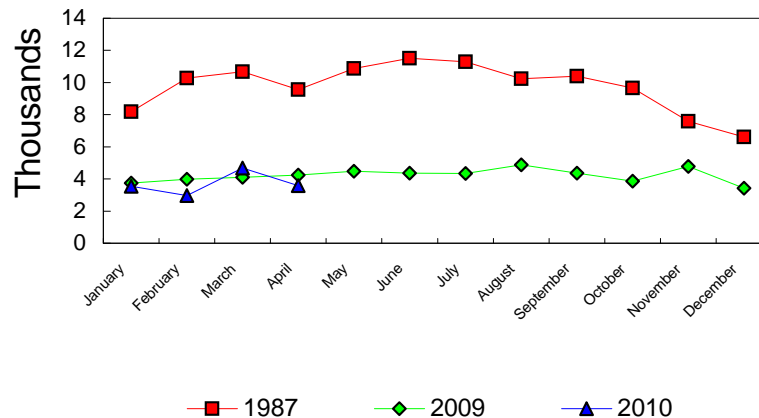
<b>Total all current month</b>	<b>76,513</b>	<b>322,944</b>	<b>341,938</b>
<b>Total all for the year</b>	<b>222,628</b>	<b>976,398</b>	<b>341,938</b>

# OPERATIONS STATISTICAL COMPARISON

FOR YEARS 1987, 2009 & 2010

	1987 OPERATIONS	2009 OPERATIONS	2010 OPERATIONS	CHANGE 1987/2010	CHANGE 2009/2010
January	8,177	3,739	<b>3,547</b>	-56.62%	-5.14%
February	10,270	3,981	<b>2,968</b>	-71.10%	-25.45%
March	10,677	4,095	<b>4,671</b>	-56.25%	14.07%
April	9,562	4,248	<b>3,586</b>	-62.50%	-15.58%
May	10,870	4,480			
June	11,514	4,355			
July	11,296	4,348			
August	10,240	4,881			
September	10,389	4,366			
October	9,656	3,867			
November	7,592	4,770			
December	6,608	3,429			
Total Through April	<b>38,686</b>	<b>16,063</b>	<b>14,772</b>	-61.82%	-8.04%
ANNUAL TOTAL	116,851	50,559	<b>14,772</b>		

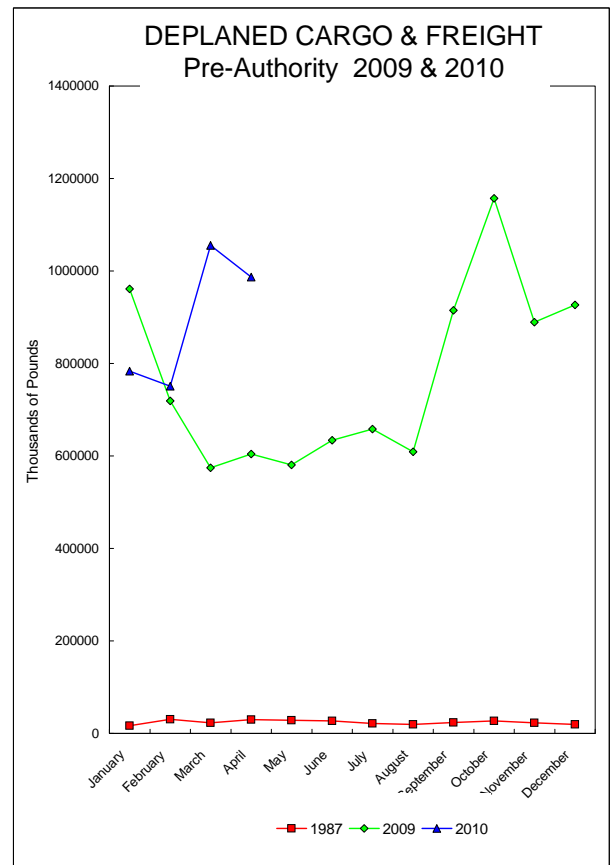
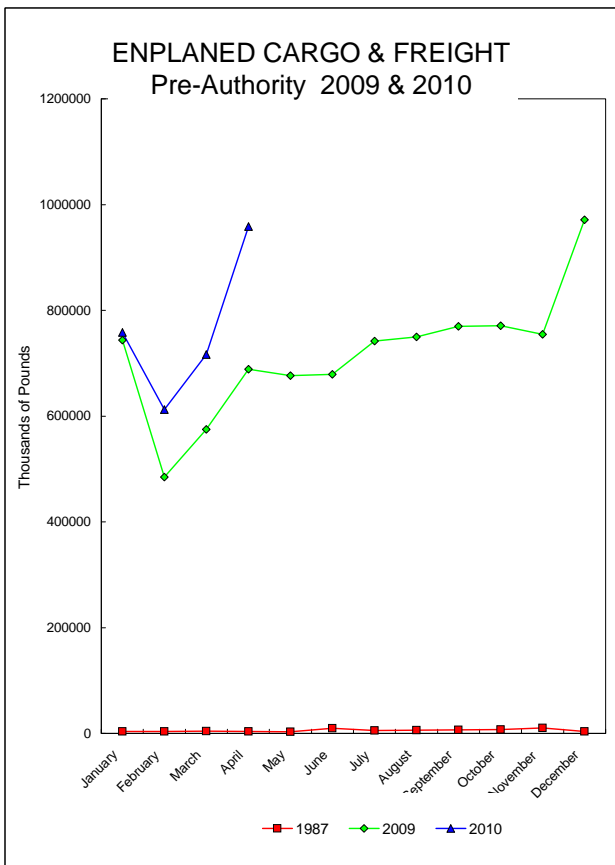
## OPERATIONS Pre-Authority vs 2009 & 2010



## BISHOP INTERNATIONAL AIRPORT AIR CARGO AND FREIGHT COMPARISON Pre-Authority(1987) 2009 & 2010

**TOTAL AIR CARGO AND FREIGHT**

	ENPLANED CARGO & FREIGHT			% Change 87-2010	% Change 2009-2010	DEPLANED CARGO & FREIGHT			% Change 87-2010	% Change 2009-2010
	1987	2009	2010			1987	2009	2010		
January	3,660	743,851	<b>758,243</b>	20617.02%	1.93%	16,557	961,215	<b>783,074</b>	4629.56%	-18.53%
February	3,582	484,989	<b>612,518</b>	16999.89%	26.30%	30,397	719,359	<b>751,047</b>	2370.79%	4.41%
March	4,268	574,692	<b>716,316</b>	16683.41%	24.64%	23,013	574,292	<b>1,055,077</b>	4484.70%	83.72%
April	3,747	688,774	<b>958,471</b>	25479.69%	39.16%	30,094	604,458	<b>986,548</b>	3178.22%	63.21%
May	3,219	676,504				28,459	580,679			
June	9,901	679,073				27,135	633,754			
July	5,316	741,605				21,325	658,224			
August	6,299	749,498				19,064	608,992			
September	6,509	769,951				23,494	914,658			
October	7,148	771,062				26,707	1,157,152			
November	10,254	754,719				22,817	889,027			
December	3,905	971,301				19,423	926,354			
<b>Total thru April</b>	<b>11,510</b>	<b>2,492,306</b>	<b>3,045,548</b>	<b>26360.02%</b>	<b>22.20%</b>	<b>69,967</b>	<b>2,859,324</b>	<b>3,575,746</b>	<b>5010.62%</b>	<b>25.06%</b>
<b>Annual Total</b>	<b>67,808</b>	<b>8,606,019</b>	<b>3,045,548</b>			<b>288,485</b>	<b>9,228,164</b>	<b>3,575,746</b>		



## FEDEX

	ENPLANED CARGO & FREIGHT					DEPLANED CARGO & FREIGHT				
	1987	2009	2010	% Change 87-2010	% Change 2009-2010	1987	2009	2010	% Change 87-2010	% Change 2009-2010
January	0	715,678	730,129	N/A	2.02%	0	939,152	752,475	N/A	-19.88%
February	0	458,660	588,262	N/A	28.26%	0	585,302	717,276	N/A	22.55%
March	0	545,702	683,662	N/A	25.28%	0	559,596	1,036,554	N/A	85.23%
April	0	662,738	921,197	N/A	39.00%	0	588,658	960,934	N/A	63.24%
May	0	646,092				0	562,225			
June	0	648,497				0	612,993			
July	0	704,960				0	634,876			
August	0	714,030				0	582,020			
September	0	733,322				0	679,842			
October	0	739,096				0	741,488			
November	0	726,534				0	824,805			
December	0	937,824				0	895,436			
Total thru April	0	2,382,778	2,923,250	N/A	22.68%	0	2,672,708	3,467,239	N/A	29.73%

## GVA

	ENPLANED CARGO & FREIGHT					DEPLANED CARGO & FREIGHT				
	1987	2009	2010	% Change 87-2010	% Change 2009-2010	1987	2009	2010	% Change 87-2010	% Change 2009-2010
January	0	0	0	N/A	N/A	0	0	10,968	N/A	N/A
February	0	0	0	N/A	N/A	0	0	17,485	N/A	N/A
March	0	0	0	N/A	N/A	0	0	0	N/A	N/A
April	0	0	5,331	N/A	N/A	0	0	4,736	N/A	N/A
May	0	0				0	0			
June	0	0				0	0			
July	0	0				0	0			
August	0	2,684				0	2,392			
September	0	4,151				0	217,311			
October	0	0				0	392,674			
November	0	0				0	45,665			
December	0	234				0	12,221			
Total thru April	0	0	5,331	N/A	N/A	0	0	33,189	N/A	N/A

## DELTA/ASA

	ENPLANED CARGO & FREIGHT					DEPLANED CARGO & FREIGHT				
	1987	2009	2010	% Change 87-2010	% Change 2009-2010	1987	2009	2010	% Change 87-2010	% Change 2009-2010
January	0	104	0	N/A	N/A	0	0	0	N/A	N/A
February	0	40	0	N/A	N/A	0	0	0	N/A	N/A
March	0	32	0	N/A	N/A	0	0	0	N/A	N/A
April	0	45	0	N/A	N/A	0	6	0	N/A	N/A
May	0	59				0	14			
June	0	0				0	18			
July	0	29				0	10			
August	0	27				0	0			
September	0	6				0	0			
October	0	0				0	8			
November	0	250				0	0			
December	0	0				0	1			
Total thru April	0	221	0	N/A	N/A	0	6	0	N/A	N/A

## AMERICAN EAGLE

	ENPLANED CARGO & FREIGHT					DEPLANED CARGO & FREIGHT				
	1987	2009	2010	% Change 87-2010	% Change 2009-2010	1987	2009	2010	% Change 87-2010	% Change 2009-2010
January	0	63	71	N/A	12.70%	0	33	21	N/A	-36.36%
February	0	60	73	N/A	21.67%	0	68	7	N/A	-89.71%
March	0	51	83	N/A	62.75%	0	12	44	N/A	266.67%
April	0	53	11	N/A	-79.25%	0	46	76	N/A	65.22%
May	0	59				0	14			
June	0	63				0	5			
July	0	57				0	9			
August	0	62				0	6			
September	0	63				0	2			
October	0	69				0	14			
November	0	66				0	6			
December	0	70				0	36			
Total thru April	0	227	238	N/A	N/A	0	159	148	N/A	N/A

## NORTHWEST (MESABA)

	ENPLANED CARGO & FREIGHT					DEPLANED CARGO & FREIGHT				
	1987	2009	2010	% Change 87-2010	% Change 2009-2010	1987	2009	2010	% Change 87-2010	% Change 2009-2010
January	120	50	278	131.67%	N/A	837	0	1,477	76.46%	N/A
February	310	155	0	N/A	N/A	1,649	0	0	N/A	N/A
March	256	42	0	N/A	N/A	2,098	9	0	N/A	N/A
April	0	29	0	N/A	N/A	0	26	0	N/A	N/A
May	0	4				0	95			
June	0	0				0	0			
July	0	0				0	0			
August	0	57				0	650			
September	0	0				0	204			
October	0	28				0	707			
November	0	56				0	677			
December	0	344				0	130			
Total thru April	686	276	278	-59.48%	0.72%	4,584	35	1,477	-67.78%	N/A

## MIDWEST CONNECT

	ENPLANED CARGO & FREIGHT					DEPLANED CARGO & FREIGHT				
	1987	2009	2010	% Change 87-2010	% Change 2009-2010	1987	2009	2010	% Change 87-2010	% Change 2009-2010
January	0	0	0	N/A	N/A	0	0	0	N/A	N/A
February	0	0	0	N/A	N/A	0	23	1	N/A	N/A
March	0	0	0	N/A	N/A	0	0	3	N/A	N/A
April	0	0	0	N/A	N/A	0	188	0	N/A	N/A
May	0	0				0	20			
June	0	0				0	40			
July	0	0				0	12			
August	0	0				0	0			
September	0	0				0	26			
October	0	0				0	56			
November	0	0				0	38			
December	0	0				0	19			
Total thru April	0	0	0	N/A	N/A	0	211	4	N/A	-98.10%

## EAGLE AIR CARGO

	ENPLANED CARGO & FREIGHT					DEPLANED CARGO & FREIGHT				
	1987	2009	2010	% Change 87-2010	% Change 2009-2010	1987	2009	2010	% Change 87-2010	% Change 2009-2010
January	0	0	0	N/A	N/A	0	0	0	N/A	N/A
February	0	0	0	N/A	N/A	0	0	0	N/A	N/A
March	0	0	0	N/A	N/A	0	0	0	N/A	N/A
April	0	0	0	N/A	N/A	0	0	0	N/A	N/A
May	0	0				0	0			
June	0	0				0	0			
July	0	0				0	0			
August	0	0				0	0			
September	0	0				0	0			
October	0	0				0	0			
November	0	0				0	0			
December	0	0				0	0			
Total thru April	0	0	0	N/A	N/A	0	0	0	N/A	N/A

## CSA Air, Inc.

	ENPLANED CARGO & FREIGHT					DEPLANED CARGO & FREIGHT				
	1987	2009	2010	% Change 87-2010	% Change 2009-2010	1987	2009	2010	% Change 87-2009	% Change 2009-2010
January	0	27,956	27,765	N/A	N/A	0	22,030	18,133	N/A	N/A
February	0	26,074	24,183	N/A	-7.25%	0	133,966	16,278	N/A	-87.85%
March	0	28,865	32,571	N/A	12.84%	0	14,675	18,476	N/A	25.90%
April	0	25,909	31,932	N/A	23.25%	0	15,534	20,802	N/A	33.91%
May	0	30,290				0	18,311			
June	0	30,513				0	20,698			
July	0	36,559				0	23,317			
August	0	32,638				0	23,924			
September	0	32,409				0	17,273			
October	0	31,869				0	22,205			
November	0	27,813				0	17,836			
December	0	32,829				0	18,511			
Total thru April	0	108,804	116,451	N/A	7.03%	0	186,205	73,689	N/A	-60.43%

## AIRTRAN

	ENPLANED CARGO & FREIGHT					DEPLANED CARGO & FREIGHT				
	1987	2009	2010	% Change 87-2010	% Change 2009-2010	1987	2009	2010	% Change 87-2010	% Change 2009-2010
January	0	0	0	N/A	N/A	0	0	0	N/A	N/A
February	0	0	0	N/A	N/A	0	0	0	N/A	N/A
March	0	0	0	N/A	N/A	0	0	0	N/A	N/A
April	0	0	0	N/A	N/A	0	0	0	N/A	N/A
May	0	0				0	0			
June	0	0				0	0			
July	0	0				0	0			
August	0	0				0	0			
September	0	0				0	0			
October	0	0				0	0			
November	0	0				0	0			
December	0	0				0	0			
Total thru April	0	0	0	N/A	N/A	0	0	0	N/A	N/A

## PRIOR CARRIERS

	ENPLANED CARGO & FREIGHT					DEPLANED CARGO & FREIGHT				
	1987	2009	2010	% Change 87-2010	% Change 2009-2010	1987	2009	2010	% Change 87-2010	% Change 2009-2010
January	3,540	0	0	-100.00%	N/A	15,720	0	0	N/A	N/A
February	3,272	0	0	N/A	N/A	28,748	0	0	N/A	N/A
March	4,012	0	0	N/A	N/A	20,915	0	0	N/A	N/A
April	3,747	0				30,094	0			
May	3,219	0				28,459	0			
June	9,901	0				27,135	0			
July	5,316	0				21,325	0			
August	6,299	0				19,064	0			
September	6,509	0				23,494	0			
October	7,148	0				26,707	0			
November	10,254	0				22,817	0			
December	3,905	0				19,423	0			
Total thru April	10,824	0	0	N/A	N/A	65,383	0	0	N/A	N/A

**BISHOP INTERNATIONAL AIRPORT  
AIR TRAFFIC RECORD 2010**

MONTH	ITINERANT AIRCRAFT					LOCAL AIRCRAFT			TOTAL OPERATIONS	CUMULATIVE OPERATIONS
	AIR CARRIER	AIR TAXI	GENERAL AVIATION	MILITARY	TOTAL ITINERANT	CIVILIAN	MILITARY	TOTAL LOCAL		
JANUARY	717	1,023	1,151	8	2,899	648	0	648	3,547	<b>3,547</b>
FEBRUARY	651	979	862	1	2,493	475	0	475	2,968	<b>6,515</b>
MARCH	725	1,142	1,563	13	3,443	1,228	0	1,228	4,671	<b>11,186</b>
APRIL	666	1,100	1,249	5	3,020	566	0	566	3,586	<b>14,772</b>
MAY					0			0	0	<b>0</b>
JUNE					0			0	0	<b>0</b>
JULY					0			0	0	<b>0</b>
AUGUST					0			0	0	<b>0</b>
SEPTEMBER					0			0	0	<b>0</b>
OCTOBER					0			0	0	<b>0</b>
NOVEMBER					0			0	0	<b>0</b>
DECEMBER					0			0	0	<b>0</b>
<b>TOTALS</b>	<b>2,759</b>	<b>4,244</b>	<b>4,825</b>	<b>27</b>	<b>11,855</b>	<b>2,917</b>	<b>0</b>	<b>2,917</b>	<b>14,772</b>	