

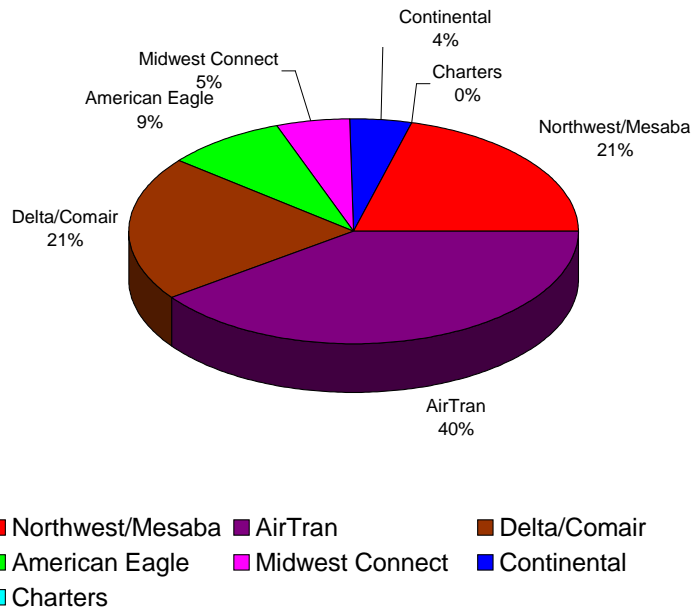
**BISHOP INTERNATIONAL AIRPORT AUTHORITY  
AIRLINE PASSENGER COMPARISON  
CALENDAR YEARS 2008 AND 2009**

ENPLANEMENTS	NORTHWEST/MESABA			AIRTRAN			DELTA/COMAIR/ASA			AMERICAN EAGLE		
	2008	2009	% Change	2008	2009	% Change	2008	2009	% Change	2008	2009	% Change
January	12,291	8,023	-34.72%	19,049	17,933	-5.86%	6,850	6,764	-1.26%	5,916	3,364	-43.14%
February	11,684	7,456	-36.19%	23,711	18,386	-22.46%	5,909	7,379	24.88%	4,989	3,283	-34.20%
March	16,416	9,003	-45.16%	23,928	19,419	-18.84%	6,878	8,861	28.83%	5,691	3,462	-39.17%
April	12,221	7,254	-40.64%	18,054	16,913	-6.32%	5,984	8,470	41.54%	5,068	3,581	-29.34%
May	11,505	7,707	-33.01%	15,312	12,933	-15.54%	5,811	7,764	33.61%	5,066	3,648	-27.99%
June	11,542	8,316	-27.95%	15,362	14,002	-8.85%	6,677	9,475	41.91%	5,416	3,752	-30.72%
July	11,752	10,885	-7.38%	16,037	15,923	-0.71%	7,073	10,112	42.97%	6,053	3,978	-34.28%
August	10,856	9,893	-8.87%	16,205	16,231	0.16%	6,833	9,870	44.45%	4,612	3,631	-21.27%
September	8,821			11,372			7,118			3,147		
October	8,461			16,529			7,939			3,422		
November	8,421			16,752			7,154			3,121		
December	10,045			16,772			7,564			3,057		
Through August	98,267	68,537	-30.25%	147,658	131,740	-10.78%	52,015	68,695	32.07%	42,811	28,699	-32.96%

ENPLANEMENTS	MIDWEST CONNECT			CONTINENTAL			CHARTERS		
	2008	2009	% Change	2008	2009	% Change	2008	2009	% Change
January	1,640	1,527	-6.89%	1,340	1,227	-8.43%	159	151	-5.03%
February	1,642	1,692	3.05%	1,497	1,630	8.88%	0	0	N/A
March	2,565	1,852	-27.80%	1,751	1,944	11.02%	0	0	N/A
April	2,794	2,115	-24.30%	1,780	1,848	3.82%	159	159	N/A
May	2,895	2,281	-21.21%	1,853	1,526	-17.65%	0	0	N/A
June	3,137	2,499	-20.34%	1,675	1,753	4.66%	0	0	N/A
July	2,948	2,533	-14.08%	1,717	2,088	21.61%	0	0	N/A
August	2,646	2,652	0.23%	1,922	2,084	8.43%	0	0	N/A
September	1,990			1,438			0		
October	1,810			1,401			157		
November	1,626			1,158			0		
December	2,088			1,575			0		
Through August	20,267	17,151	-15.37%	13,535	14,100	4.17%	318	310	N/A

Latest Stats.**	<u>June</u>	<u>Jan - June 09</u>
National avg.	-5.93%	-8.81%
Bishop Airport	-9.16%	-16.37%

**ENPLANEMENT SHARE BY AIRLINE  
Calendar Year 2009**



\*\* RITA Bureau of Transportation Statistics

	TOTAL		
	2008	2009	% Change
January	47,245	38,989	-17.47%
February	49,432	39,826	-19.43%
March	57,229	44,541	-22.17%
April	46,060	40,340	-12.42%
May	42,442	35,859	-15.51%
June	43,809	39,797	-9.16%
July	45,580	45,519	-0.13%
August	43,074	44,361	2.99%
September	33,886	0	
October	39,719	0	
November	38,232	0	
December	41,101	0	
Through August	374,871	329,232	-12.17%
Total Year	527,809	329,232	

**BISHOP INTERNATIONAL AIRPORT AUTHORITY  
AIRLINE LOAD FACTOR ANALYSIS**

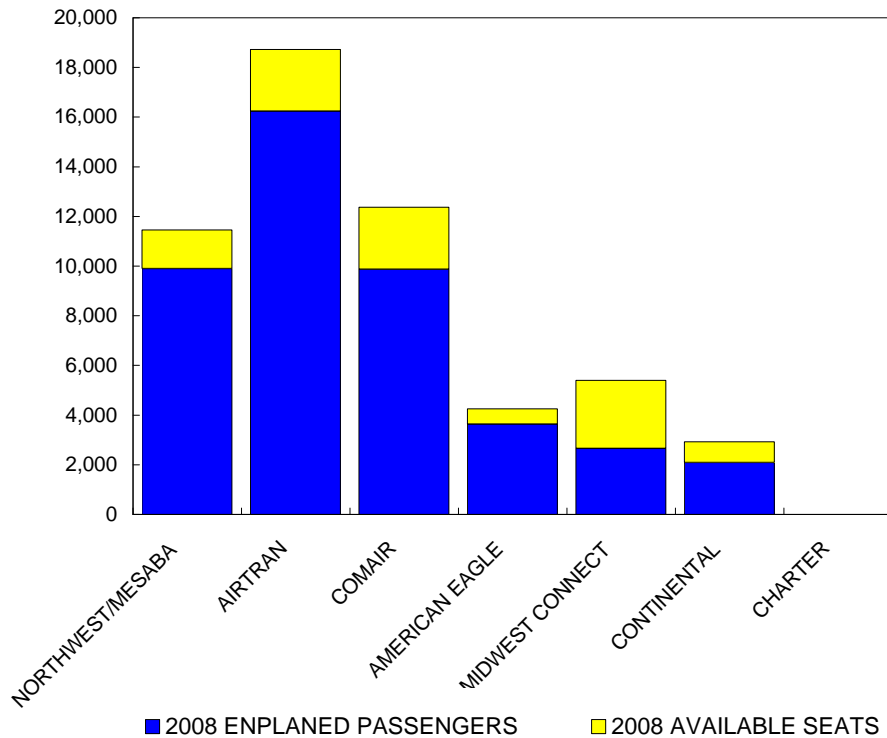
8/1/2009

2008

2009

AIRLINE	AVAILABLE SEATS	ENPLANED PAX	LOAD FACTOR	AVAILABLE SEATS	ENPLANED PAX	LOAD FACTOR
NORTHWEST/MESABA	17,334	10,856	62.63%	11,458	9,893	86.34%
AIRTRAN	19,549	16,205	82.89%	18,720	16,231	86.70%
COMAIR	7,940	6,833	86.06%	12,366	9,870	79.82%
AMERICAN EAGLE	5,554	4,612	83.04%	4,250	3,631	85.44%
MIDWEST CONNECT	5,200	2,646	50.88%	5,400	2,652	49.11%
CONTINENTAL	3,034	1,922	63.35%	2,923	2,084	71.30%
CHARTER	0	0	N/A	0	0	N/A
ALL AIRLINES	58,611	43,074	73.49%	55,117	44,361	80.49%

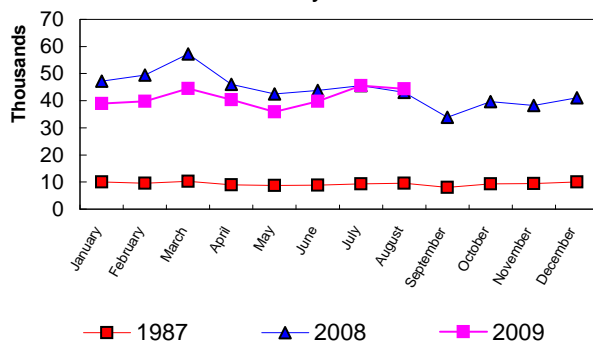
**Enplanements vs Available Seats  
Current Month**



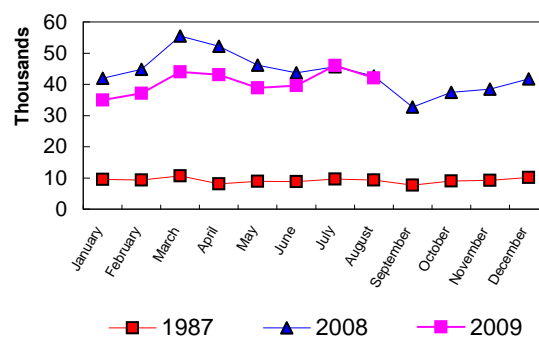
**BISHOP INTERNATIONAL AIRPORT  
PASSENGER STATISTICAL COMPARISON  
FOR THE YEARS 1987, 2008, 2009**

	<b>ENPLANED PASSENGERS</b>			<b>% CHANGE</b>	<b>% CHANGE</b>
	1987	2008	2009	1987/2009	2008/2009
January	10,008	47,245	38,989	289.58%	-17.47%
February	9,544	49,432	39,826	317.29%	-19.43%
March	10,287	57,229	44,541	332.98%	-22.17%
April	8,967	46,060	40,340	349.87%	-12.42%
May	8,685	42,442	35,859	312.88%	-15.51%
June	8,891	43,809	39,797	347.61%	-9.16%
July	9,372	45,580	45,519	385.69%	-0.13%
August	9,586	43,074	44,361	362.77%	2.99%
September	8,038	33,886			
October	9,350	39,719			
November	9,402	38,232			
December	10,010	41,101			
<b>Total thru August</b>	<b>75,340</b>	<b>374,871</b>	<b>329,232</b>	<b>336.99%</b>	<b>-12.17%</b>
<b>Total for Year</b>	<b>112,140</b>	<b>527,809</b>	<b>329,232</b>		

**ENPLANEMENT COMPARISON**  
Pre-Authority vs 2008 & 2009



**DEPLANEMENT COMPARISON**  
Pre-Authority vs 2008 & 2009



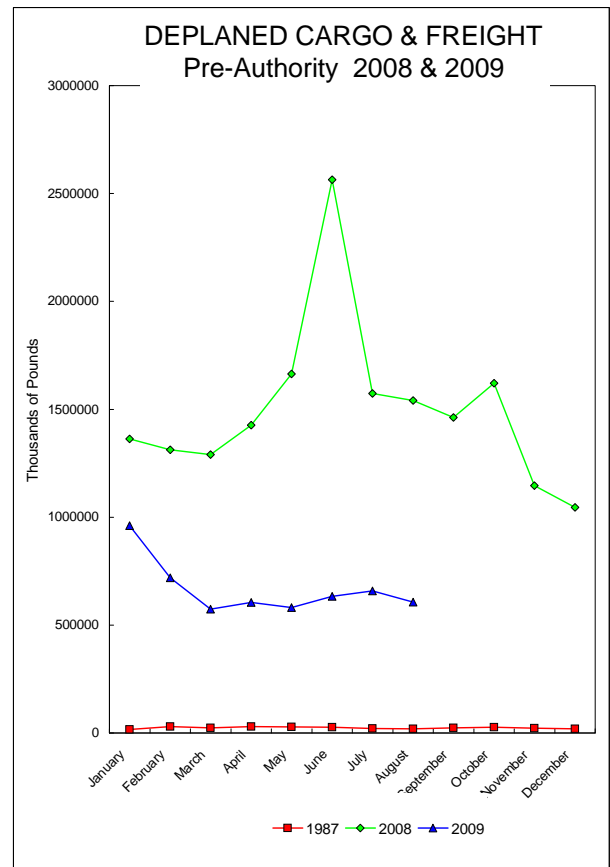
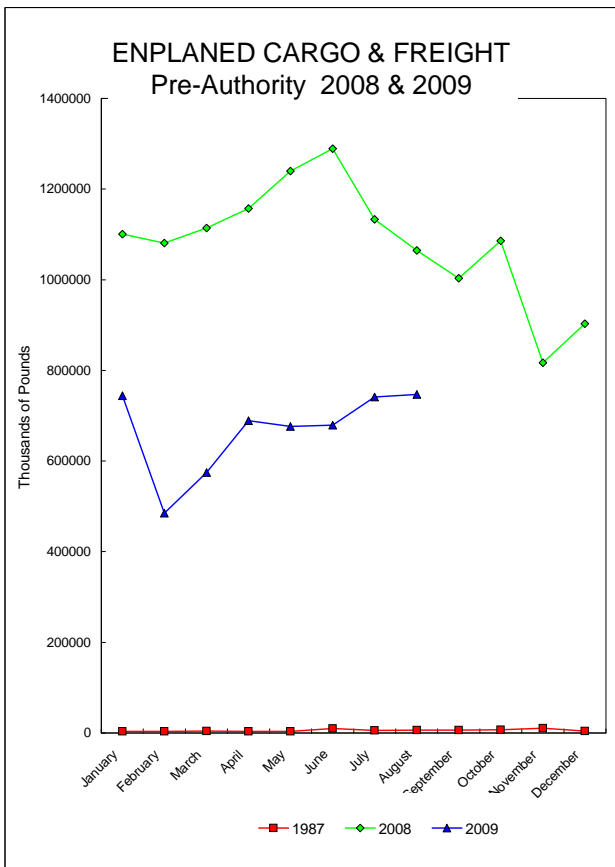
	<b>DEPLANED PASSENGERS</b>			<b>% CHANGE</b>	<b>% CHANGE</b>
	1987	2008	2009	1987/2009	2008/2009
January	9,542	41,948	35,013	266.94%	-16.53%
February	9,380	44,852	37,122	295.76%	-17.23%
March	10,646	55,515	43,994	313.24%	-20.75%
April	8,139	52,171	43,119	429.78%	-17.35%
May	8,969	46,110	38,854	333.20%	-15.74%
June	8,795	43,716	39,569	349.90%	-9.49%
July	9,592	45,689	46,075	380.35%	0.84%
August	9,331	42,693	42,012	350.24%	-1.60%
September	7,740	32,667			
October	9,005	37,478			
November	9,235	38,462			
December	10,114	41,703			
<b>Total thru August</b>	<b>74,394</b>	<b>372,694</b>	<b>325,758</b>	<b>337.88%</b>	<b>-12.59%</b>
<b>Total for Year</b>	<b>110,488</b>	<b>523,004</b>	<b>325,758</b>		

<b>Total all current month</b>	<b>149,734</b>	<b>747,565</b>	<b>654,990</b>
<b>Total all for the year</b>	<b>222,628</b>	<b>1,050,813</b>	<b>654,990</b>

# BISHOP INTERNATIONAL AIRPORT AIR CARGO AND FREIGHT COMPARISON Pre-Authority(1987) 2008 & 2009

**TOTAL AIR CARGO AND FREIGHT**

	ENPLANED CARGO & FREIGHT			% Change 87-2009	% Change 2008-2009	DEPLANED CARGO & FREIGHT			% Change 87-2009	% Change 2008-2009
	1987	2008	2009			1987	2008	2009		
January	3,660	1,100,987	748,851	20223.80%	-32.44%	16,557	1,362,603	961,215	5705.49%	-29.46%
February	3,582	1,080,738	484,989	13439.61%	-55.12%	30,397	1,312,330	719,359	2266.55%	-45.18%
March	4,268	1,114,173	574,692	13365.14%	-48.42%	23,013	1,290,406	574,292	2395.51%	-55.50%
April	3,747	1,157,137	688,774	18282.01%	-40.48%	30,094	1,426,201	604,458	1908.67%	-57.62%
May	3,219	1,239,693	676,504	20915.97%	-45.43%	28,459	1,663,538	580,679	1940.41%	-65.09%
June	9,901	1,289,325	679,073	6758.63%	-47.33%	27,135	2,564,605	633,754	2235.56%	-75.29%
July	5,316	1,139,001	741,605	13850.43%	-34.55%	21,325	1,573,163	658,224	2986.63%	-58.16%
August	6,299	1,064,939	746,814	11756.07%	-29.87%	19,064	1,540,210	606,600	3081.91%	-60.62%
September	6,509	1,003,008				23,494	1,462,871			
October	7,148	1,085,746				26,707	1,620,352			
November	10,254	816,594				22,817	1,146,640			
December	3,905	908,172				19,423	1,045,282			
<b>Total thru August</b>	<b>39,992</b>	<b>9,179,641</b>	<b>5,336,302</b>	<b>13243.42%</b>	<b>-41.87%</b>	<b>196,044</b>	<b>12,733,056</b>	<b>5,338,543</b>	<b>2623.14%</b>	<b>-58.07%</b>
<b>Annual Total</b>	<b>67,808</b>	<b>12,988,513</b>	<b>5,336,302</b>			<b>288,485</b>	<b>18,008,201</b>	<b>5,338,581</b>		



## FEDEX

	ENPLANED CARGO & FREIGHT					DEPLANED CARGO & FREIGHT				
	1987	2008	2009	% Change 87-2009	% Change 2008-2009	1987	2008	2009	% Change 87-2009	% Change 2008-2009
January	0	870,732	715,678	N/A	-17.81%	0	976,067	939,152	N/A	-3.78%
February	0	839,826	458,660	N/A	-45.39%	0	986,041	585,302	N/A	-40.64%
March	0	832,812	545,702	N/A	-34.47%	0	966,259	559,596	N/A	-42.09%
April	0	902,615	662,738	N/A	-26.58%	0	1,041,227	588,658	N/A	-43.46%
May	0	887,145	646,092	N/A	-27.17%	0	1,025,009	562,225	N/A	-45.15%
June	0	850,739	648,497	N/A	-23.77%	0	1,020,445	612,993	N/A	-39.93%
July	0	832,637	704,960	N/A	-15.33%	0	1,081,087	634,876	N/A	-41.27%
August	0	774,265	714,030	N/A	-7.78%	0	1,065,428	582,020	N/A	-45.37%
September	0	715,516				0	994,570			
October	0	824,642				0	1,109,449			
November	0	667,959				0	866,734			
December	0	841,807				0	1,029,399			
Total thru August	0	6,790,771	5,096,357	N/A	-24.95%	0	8,161,563	5,064,822	N/A	-37.94%

## GVA

	ENPLANED CARGO & FREIGHT					DEPLANED CARGO & FREIGHT				
	1987	2008	2009	% Change 87-2009	% Change 2008-2009	1987	2008	2009	% Change 87-2009	% Change 2008-2009
January	0	40	0	N/A	N/A	0	0	0	N/A	N/A
February	0	8,976	0	N/A	N/A	0	2,060	0	N/A	N/A
March	0	1,008	0	N/A	N/A	0	31	0	N/A	N/A
April	0	1,793	0	N/A	N/A	0	0	0	N/A	N/A
May	0	95,081	0	N/A	N/A	0	231,046	0	N/A	N/A
June	0	129,326	0	N/A	N/A	0	1,074,485	0	N/A	N/A
July	0	0	0	N/A	N/A	0	0	0	N/A	N/A
August	0	250	0	N/A	N/A	0	6,220	0	N/A	N/A
September	0	11,748				0	10,000			
October	0	10				0	0			
November	0	0				0	0			
December	0	3,910				0	0			
Total thru August	0	236,474	0	N/A	-100.00%	0	1,313,842	0	N/A	-100.00%

## AIRBORNE

	ENPLANED CARGO & FREIGHT					DEPLANED CARGO & FREIGHT				
	1987	2008	2009	% Change 87-2009	% Change 2008-2009	1987	2008	2009	% Change 87-2009	% Change 2008-2009
January	0	158,619	0	N/A	N/A	0	360,700	0	N/A	N/A
February	0	153,865	0	N/A	N/A	0	294,741	0	N/A	N/A
March	0	201,341	0	N/A	N/A	0	298,884	0	N/A	N/A
April	0	169,401	0	N/A	N/A	0	357,939	0	N/A	N/A
May	0	159,640	0	N/A	N/A	0	380,323	0	N/A	N/A
June	0	246,821	0	N/A	N/A	0	445,463	0	N/A	N/A
July	0	239,609	0	N/A	N/A	0	467,483	0	N/A	N/A
August	0	231,286	0	N/A	N/A	0	445,980	0	N/A	N/A
September	0	219,903				0	432,950			
October	0	194,008				0	476,602			
November	0	96,999				0	260,875			
December	0	0				0	0			
Total thru August	0	1,560,582	0	N/A	-100.00%	0	3,051,513	0	N/A	-100.00%

## AMERICAN EAGLE

	ENPLANED CARGO & FREIGHT					DEPLANED CARGO & FREIGHT				
	1987	2008	2009	% Change 87-2009	% Change 2008-2009	1987	2008	2009	% Change 87-2009	% Change 2008-2009
January	0	258	63	N/A	-75.58%	0	77	33	N/A	-57.14%
February	0	7	60	N/A	757.14%	0	166	68	N/A	-59.04%
March	0	172	51	N/A	-70.35%	0	100	12	N/A	-88.00%
April	0	123	53	N/A	-56.91%	0	34	46	N/A	35.29%
May	0	28	59	N/A	110.71%	0	53	14	N/A	-73.58%
June	0	77	63	N/A	-18.18%	0	51	5	N/A	-90.20%
July	0	46	57	N/A	23.91%	0	35	9	N/A	-74.29%
August	0	44	62	N/A	40.91%	0	44	6	N/A	-86.36%
September	0	43				0	14			
October	0	54				0	83			
November	0	54				0	117			
December	0	45				0	2			
Total thru August	0	755	468	N/A	N/A	0	560	193	N/A	N/A

## NORTHWEST (MESABA)

	ENPLANED CARGO & FREIGHT					DEPLANED CARGO & FREIGHT				
	1987	2008	2009	% Change 87-2009	% Change 2008-2009	1987	2008	2009	% Change 87-2009	% Change 2008-2009
January	120	101	50	-58.33%	-50.50%	837	67	0	-100.00%	N/A
February	310	205	155	-50.00%	-24.39%	1,649	240	0	N/A	N/A
March	256	267	42	-83.59%	-84.27%	2,098	43	9	-99.57%	-79.07%
April	0	231	29	N/A	-87.45%	0	89	26	N/A	-70.79%
May	0	198	4	N/A	-97.98%	0	179	95	N/A	-46.93%
June	0	87	0	N/A	N/A	0	102	0	N/A	N/A
July	0	129	0	N/A	N/A	0	140	0	N/A	N/A
August	0	98	57	N/A	-41.84%	0	623	650	N/A	4.33%
September	0	409				0	192			
October	0	74				0	162			
November	0	276				0	7			
December	0	133				0	12			
Total thru August	686	1,316	337	-50.87%	-74.39%	4,584	1,483	780	-82.98%	-47.40%

## MIDWEST CONNECT

	ENPLANED CARGO & FREIGHT					DEPLANED CARGO & FREIGHT				
	1987	2008	2009	% Change 87-2009	% Change 2008-2009	1987	2008	2009	% Change 87-2009	% Change 2008-2009
January	0	0	0	N/A	N/A	0	500	0	N/A	N/A
February	0	0	0	N/A	N/A	0	846	23	N/A	-97.28%
March	0	0	0	N/A	N/A	0	249	0	N/A	N/A
April	0	0	0	N/A	N/A	0	588	188	N/A	-68.03%
May	0	0	0	N/A	N/A	0	77	20	N/A	-74.03%
June	0	0	0	N/A	N/A	0	83	40	N/A	-51.81%
July	0	0	0	N/A	N/A	0	133	12	N/A	-90.98%
August	0	0	0	N/A	N/A	0	181	0	N/A	N/A
September	0	0				0	86			
October	0	0				0	0			
November	0	0				0	100			
December	0	0				0	0			
Total thru August	0	0	0	N/A	N/A	0	2,657	283	N/A	-89.35%

## EAGLE AIR CARGO

	ENPLANED CARGO & FREIGHT					DEPLANED CARGO & FREIGHT				
	1987	2008	2009	% Change 87-2009	% Change 2008-2009	1987	2008	2009	% Change 87-2009	% Change 2008-2009
January	0	19977	0	N/A	N/A	0	8,298	0	N/A	N/A
February	0	25942	0	N/A	N/A	0	10,234	0	N/A	N/A
March	0	24500	0	N/A	N/A	0	6,612	0	N/A	N/A
April	0	29470	0	N/A	N/A	0	8,328	0	N/A	N/A
May	0	39216	0	N/A	N/A	0	9,346	0	N/A	N/A
June	0	0	0	N/A	N/A	0	0	0	N/A	N/A
July	0	0	0	N/A	N/A	0	0	0	N/A	N/A
August	0	0	0	N/A	N/A	0	0	0	N/A	N/A
September	0	0				0	0			
October	0	0				0	0			
November	0	0				0	0			
December	0	0				0	0			
Total thru August	0	139,105	0	N/A	N/A	0	42,818	0	N/A	N/A

## CSA Air, Inc.

	ENPLANED CARGO & FREIGHT					DEPLANED CARGO & FREIGHT				
	1987	2008	2009	% Change 87-2009	% Change 2008-2009	1987	2008	2009	% Change 87-2009	% Change 2008-2009
January	0	51,260	27,956	N/A	N/A	0	16,894	22,030	N/A	N/A
February	0	51,917	26,074	N/A	-49.78%	0	18,002	133,966	N/A	644.17%
March	0	54,073	28,865	N/A	-46.62%	0	18,228	14,675	N/A	-19.49%
April	0	53,504	25,909	N/A	-51.58%	0	17,996	15,534	N/A	-13.68%
May	0	58,385	30,290	N/A	-48.12%	0	17,505	18,311	N/A	4.60%
June	0	62,080	30,513	N/A	-50.85%	0	23,976	20,698	N/A	-13.67%
July	0	60,580	36,559	N/A	-39.65%	0	24,285	23,317	N/A	-3.99%
August	0	58,839	32,638	N/A	-44.53%	0	21,734	23,924	N/A	10.08%
September	0	55,259				0	25,059			
October	0	66,720				0	34,056			
November	0	51,247				0	18,807			
December	0	57,158				0	15,869			
Total thru August	0	450,638	238,804	N/A	-47.01%	0	158,620	272,455	N/A	71.77%

## AIRTRAN

	ENPLANED CARGO & FREIGHT			% Change		DEPLANED CARGO & FREIGHT			% Change	
	1987	2008	2009	87-2009	2008-2009	1987	2008	2009	87-2009	2008-2009
January	0	0	0	N/A	N/A	0	0	0	N/A	N/A
February	0	0	0	N/A	N/A	0	0	0	N/A	N/A
March	0	0	0	N/A	N/A	0	0	0	N/A	N/A
April	0	0	0	N/A	N/A	0	0	0	N/A	N/A
May	0	0	0	N/A	N/A	0	0	0	N/A	N/A
June	0	0	0	N/A	N/A	0	0	0	N/A	N/A
July	0	0	0	N/A	N/A	0	0	0	N/A	N/A
August	0	0	0	N/A	N/A	0	0	0	N/A	N/A
September	0	0				0	0			
October	0	0				0	0			
November	0	0				0	0			
December	0	0				0	0			
Total thru August	0	0	0	N/A	N/A	0	0	0	N/A	N/A

## PRIOR CARRIERS

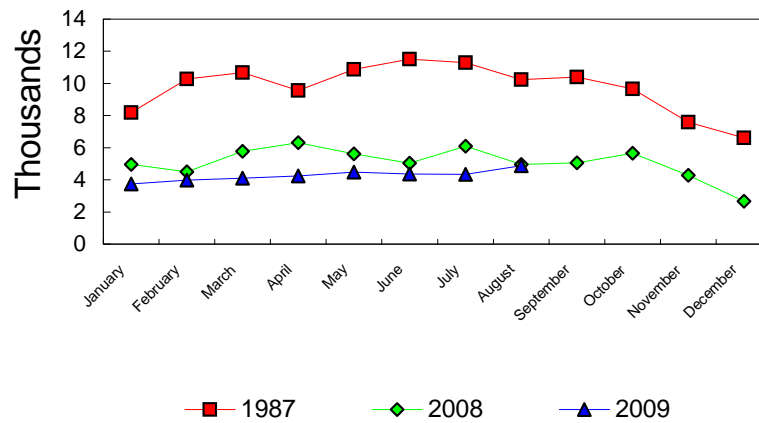
	ENPLANED CARGO & FREIGHT			% Change		DEPLANED CARGO & FREIGHT			% Change	
	1987	2008	2009	87-2009	2008-2009	1987	2008	2009	87-2009	2008-2009
January	3,540	0	104	-97.06%	N/A	15,720	0	0	N/A	N/A
February	3,272	0	40	-98.78%	N/A	28,748	0	0	N/A	N/A
March	4,012	0	32	-99.20%	N/A	20,915	0	0	N/A	N/A
April	3,747	0	45	-98.80%	N/A	30,094	0	6	-99.98%	N/A
May	3,219	0	59	-0.98167133	N/A	28,459	0	14	-99.95%	N/A
June	9,901	195	0	-100.00%	N/A	27,135	0	18	-99.93%	N/A
July	5,316	0	29	-99.45%	N/A	21,325	0	10	-99.95%	N/A
August	6,299	157	27	-99.57%	-82.80%	19,064	0	0	N/A	N/A
September	6,509	130				23,494	0			
October	7,148	238				26,707	0			
November	10,254	59				22,817	0			
December	3,905	119				19,423	0			
Total thru August	39,306	352	336	N/A	N/A	191,460	0	48	N/A	N/A

# OPERATIONS STATISTICAL COMPARISON

FOR YEARS 1987, 2008 & 2009

	1987 OPERATIONS	2008 OPERATIONS	2009 OPERATIONS	CHANGE 1987/2009	CHANGE 2008/2009
January	8,177	4,961	3,739	-54.27%	-24.63%
February	10,270	4,491	3,981	-61.24%	-11.36%
March	10,677	5,784	4,095	-61.65%	-29.20%
April	9,562	6,307	4,248	-55.57%	-32.65%
May	10,870	5,611	4,480	-58.79%	-20.16%
June	11,514	5,033	4,355	-62.18%	-13.47%
July	11,296	6,096	4,348	-61.51%	-28.67%
August	10,240	4,965	4,881	-52.33%	-1.69%
September	10,389	5,050			
October	9,656	5,651			
November	7,592	4,273			
December	6,608	2,660			
Total Through August	82,606	43,248	34,127	-58.69%	-21.09%
ANNUAL TOTAL	116,851	60,882	34,127		

## OPERATIONS Pre-Authority vs 2008 & 2009



**BISHOP INTERNATIONAL AIRPORT  
AIR TRAFFIC RECORD 2009**

MONTH	ITINERANT AIRCRAFT					LOCAL AIRCRAFT			TOTAL OPERATIONS	CUMULATIVE OPERATIONS
	AIR CARRIER	AIR TAXI	GENERAL AVIATION	MILITARY	TOTAL ITINERANT	CIVILIAN	MILITARY	TOTAL LOCAL		
JANAURY	821	931	827	6	2,585	1,154		1,154	3,739	3,739
FEBRUARY	759	767	866	13	2,405	1,576		1,576	3,981	7,720
MARCH	927	754	1,237	5	2,923	1,172		1,172	4,095	11,815
APRIL	887	828	1,096	19	2,830	1,418		1,418	4,248	16,063
MAY	848	730	1,566	26	3,170	1,308	2	1,310	4,480	20,543
JUNE	773	917	1,344	21	3,055	1,300		1,300	4,355	24,898
JULY	816	1,025	1,364	12	3,217	1,129	2	1,131	4,348	29,246
AUGUST	821	1,033	1,442	23	3,319	1,562		1,562	4,881	34,127
SEPTEMBER					0			0	0	0
OCTOBER					0			0	0	0
NOVEMBER					0			0	0	0
DECEMBER					0			0	0	0
<b>TOTALS</b>	<b>6,652</b>	<b>6,985</b>	<b>9,742</b>	<b>125</b>	<b>23,504</b>	<b>10,619</b>	<b>4</b>	<b>10,623</b>	<b>34,127</b>	