

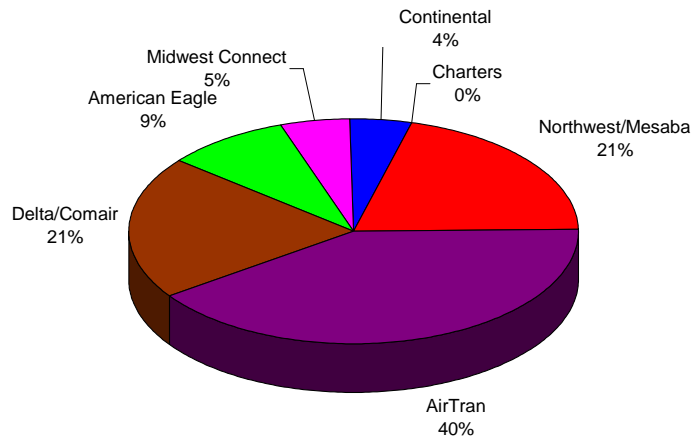
**BISHOP INTERNATIONAL AIRPORT AUTHORITY  
AIRLINE PASSENGER COMPARISON  
CALENDAR YEARS 2008 AND 2009**

ENPLANEMENTS	NORTHWEST/MESABA			AIRTRAN			DELTA/COMAIR/ASA			AMERICAN EAGLE		
	2008	2009	% Change	2008	2009	% Change	2008	2009	% Change	2008	2009	% Change
January	12,291	8,023	-34.72%	19,049	17,933	-5.86%	6,850	6,764	-1.26%	5,916	3,364	-43.14%
February	11,684	7,456	-36.19%	23,711	18,386	-22.46%	5,909	7,379	24.88%	4,989	3,283	-34.20%
March	16,416	9,003	-45.16%	23,928	19,419	-18.84%	6,878	8,861	28.83%	5,691	3,462	-39.17%
April	12,221	7,254	-40.64%	18,054	16,913	-6.32%	5,984	8,470	41.54%	5,068	3,581	-29.34%
May	11,505	7,707	-33.01%	15,312	12,933	-15.54%	5,811	7,764	33.61%	5,066	3,648	-27.99%
June	11,542	8,316	-27.95%	15,362	14,002	-8.85%	6,677	9,475	41.91%	5,416	3,752	-30.72%
July	11,752	10,885	-7.38%	16,037	15,923	-0.71%	7,073	10,112	42.97%	6,053	3,978	-34.28%
August	10,856			16,205			6,833			4,612		
September	8,821			11,372			7,118			3,147		
October	8,461			16,529			7,939			3,422		
November	8,421			16,752			7,154			3,121		
December	10,045			16,772			7,564			3,057		
Through July	87,411	58,644	-32.91%	131,453	115,509	-12.13%	45,182	58,825	30.20%	38,199	25,068	-34.38%

ENPLANEMENTS	MIDWEST CONNECT			CONTINENTAL			CHARTERS		
	2008	2009	% Change	2008	2009	% Change	2008	2009	% Change
January	1,640	1,527	-6.89%	1,340	1,227	-8.43%	159	151	-5.03%
February	1,642	1,692	3.05%	1,497	1,630	8.88%	0	0	N/A
March	2,565	1,852	-27.80%	1,751	1,944	11.02%	0	0	N/A
April	2,794	2,115	-24.30%	1,780	1,848	3.82%	159	159	N/A
May	2,895	2,281	-21.21%	1,853	1,526	-17.65%	0	0	N/A
June	3,137	2,499	-20.34%	1,675	1,753	4.66%	0	0	N/A
July	2,948	2,533	-14.08%	1,717	2,088	21.61%	0	0	N/A
August	2,646			1,922			0		
September	1,990			1,438			0		
October	1,810			1,401			157		
November	1,626			1,158			0		
December	2,088			1,575			0		
Through July	17,621	14,499	-17.72%	11,613	12,016	3.47%	318	310	N/A

Latest Stats. March 09 Jan - Mar 09  
 National avg. -8.64% -10.35%  
 Bishop Airport -22.17% -19.85%

**ENPLANEMENT SHARE BY AIRLINE  
Calendar Year 2009**



	TOTAL		
	2008	2009	% Change
January	47,245	38,989	-17.47%
February	49,432	39,826	-19.43%
March	57,229	44,541	-22.17%
April	46,060	40,340	-12.42%
May	42,442	35,859	-15.51%
June	43,809	39,797	-9.16%
July	45,580	45,519	-0.13%
August	43,074	0	
September	33,886	0	
October	39,719	0	
November	38,232	0	
December	41,101	0	
Through July	331,797	284,871	-14.14%
Total Year	527,809	284,871	

■ Northwest/Mesaba    ■ AirTran    ■ Delta/Comair  
■ American Eagle    ■ Midwest Connect    ■ Continental  
■ Charters

**BISHOP INTERNATIONAL AIRPORT AUTHORITY  
AIRLINE LOAD FACTOR ANALYSIS**

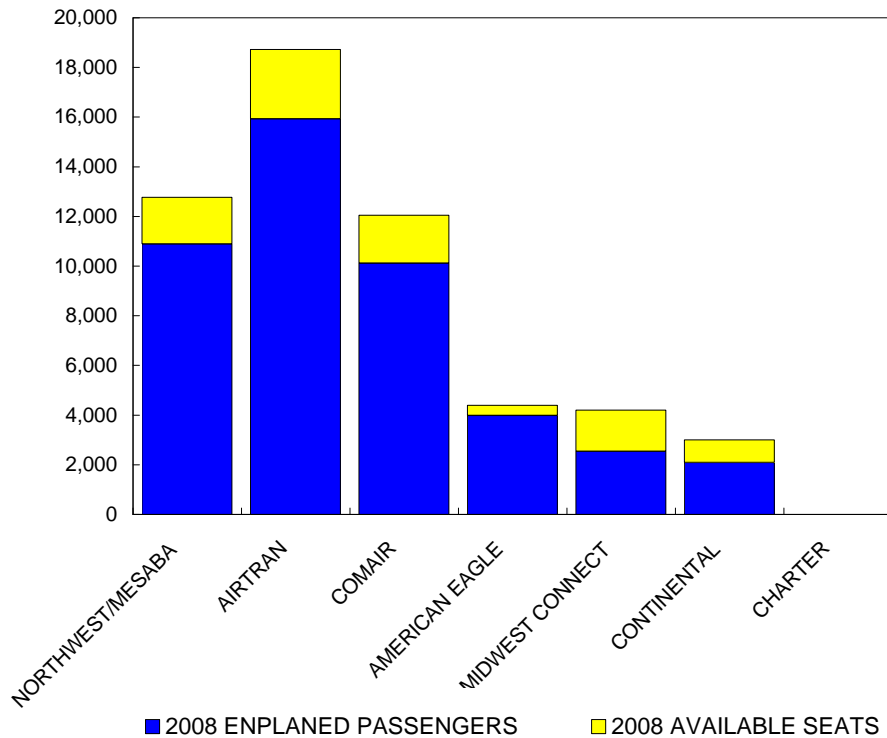
7/1/2009

2008

2009

AIRLINE	AVAILABLE SEATS	ENPLANED PAX	LOAD FACTOR	AVAILABLE SEATS	ENPLANED PAX	LOAD FACTOR
NORTHWEST/MESABA	17,568	11,752	66.89%	12,773	10,885	85.22%
AIRTRAN	19,726	16,037	81.30%	18,720	15,923	85.06%
COMAIR	7,900	7,073	89.53%	12,052	10,112	83.90%
AMERICAN EAGLE	6,924	6,053	87.42%	4,400	3,978	90.41%
MIDWEST CONNECT	5,400	2,948	54.59%	4,200	2,533	60.31%
CONTINENTAL	2,997	1,717	57.29%	2,997	2,088	69.67%
CHARTER	0	0	N/A	0	0	N/A
ALL AIRLINES	60,515	45,580	75.32%	55,142	45,519	82.55%

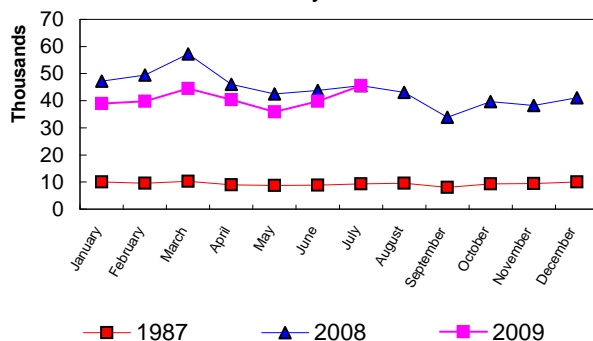
**Enplanements vs Available Seats  
Current Month**



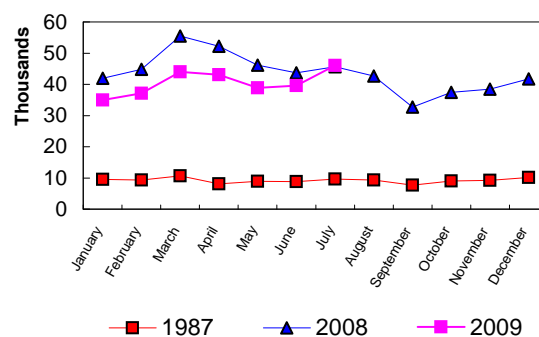
**BISHOP INTERNATIONAL AIRPORT  
PASSENGER STATISTICAL COMPARISON  
FOR THE YEARS 1987, 2008, 2009**

	<b>ENPLANED PASSENGERS</b>			<b>% CHANGE</b>	<b>% CHANGE</b>
	1987	2008	2009	1987/2009	2008/2009
January	10,008	47,245	38,989	289.58%	-17.47%
February	9,544	49,432	39,826	317.29%	-19.43%
March	10,287	57,229	44,541	332.98%	-22.17%
April	8,967	46,060	40,340	349.87%	-12.42%
May	8,685	42,442	35,859	312.88%	-15.51%
June	8,891	43,809	39,797	347.61%	-9.16%
July	9,372	45,580	45,519	385.69%	-0.13%
August	9,586	43,074			
September	8,038	33,886			
October	9,350	39,719			
November	9,402	38,232			
December	10,010	41,101			
<b>Total thru July</b>	<b>65,754</b>	<b>331,797</b>	<b>284,871</b>	<b>333.24%</b>	<b>-14.14%</b>
<b>Total for Year</b>	<b>112,140</b>	<b>527,809</b>	<b>284,871</b>		

**ENPLANEMENT COMPARISON**  
Pre-Authority vs 2008 & 2009



**DEPLANEMENT COMPARISON**  
Pre-Authority vs 2008 & 2009



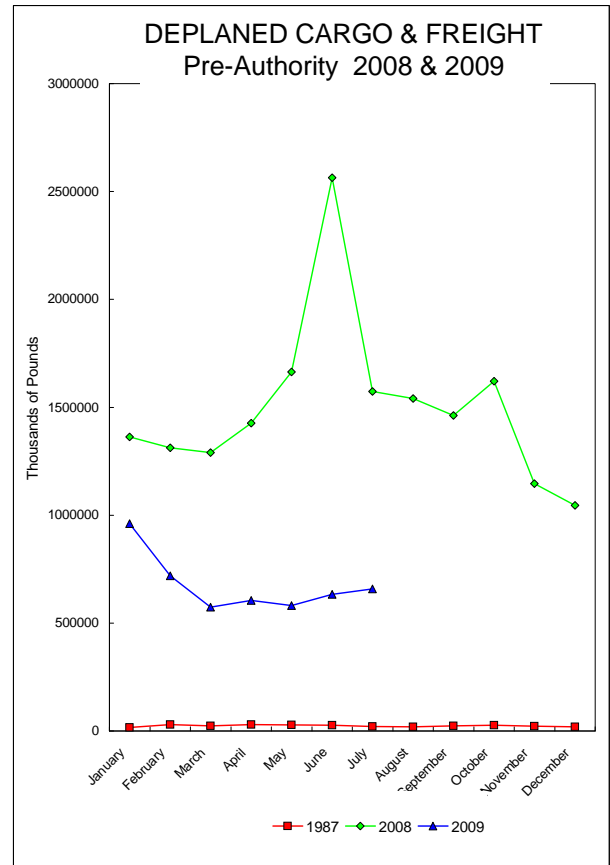
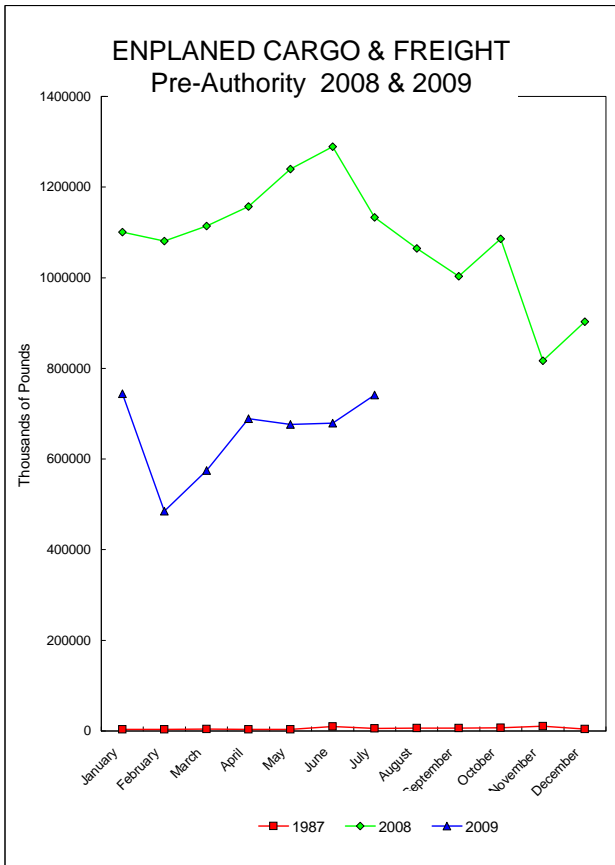
	<b>DEPLANED PASSENGERS</b>			<b>% CHANGE</b>	<b>% CHANGE</b>
	1987	2008	2009	1987/2009	2008/2009
January	9,542	41,948	35,013	266.94%	-16.53%
February	9,380	44,852	37,122	295.76%	-17.23%
March	10,646	55,515	43,994	313.24%	-20.75%
April	8,139	52,171	43,119	429.78%	-17.35%
May	8,969	46,110	38,854	333.20%	-15.74%
June	8,795	43,716	39,569	349.90%	-9.49%
July	9,592	45,689	46,075	380.35%	0.84%
August	9,331	42,693			
September	7,740	32,667			
October	9,005	37,478			
November	9,235	38,462			
December	10,114	41,703			
<b>Total thru July</b>	<b>65,063</b>	<b>330,001</b>	<b>283,746</b>	<b>336.11%</b>	<b>-14.02%</b>
<b>Total for Year</b>	<b>110,488</b>	<b>523,004</b>	<b>283,746</b>		

<b>Total all current month</b>	<b>130,817</b>	<b>661,798</b>	<b>568,617</b>
<b>Total all for the year</b>	<b>222,628</b>	<b>1,050,813</b>	<b>568,617</b>

# BISHOP INTERNATIONAL AIRPORT AIR CARGO AND FREIGHT COMPARISON Pre-Authority(1987) 2008 & 2009

**TOTAL AIR CARGO AND FREIGHT**

	ENPLANED CARGO & FREIGHT			% Change 87-2009	% Change 2008-2009	DEPLANED CARGO & FREIGHT			% Change 87-2009	% Change 2008-2009
	1987	2008	2009			1987	2008	2009		
January	3,660	1,100,987	748,851	20223.80%	-32.44%	16,557	1,362,603	961,215	5705.49%	-29.46%
February	3,582	1,080,738	484,989	13439.61%	-55.12%	30,397	1,312,330	719,359	2266.55%	-45.18%
March	4,268	1,114,173	574,692	13365.14%	-48.42%	23,013	1,290,406	574,292	2395.51%	-55.50%
April	3,747	1,157,137	688,774	18282.01%	-40.48%	30,094	1,426,201	604,458	1908.67%	-57.62%
May	3,219	1,239,693	676,504	20915.97%	-45.43%	28,459	1,663,538	580,679	1940.41%	-65.09%
June	9,901	1,289,325	679,073	6758.63%	-47.33%	27,135	2,564,605	633,754	2235.56%	-75.29%
July	5,316	1,139,001	741,548	13849.36%	-34.55%	21,325	1,573,163	658,215	2986.59%	-58.16%
August	6,299	1,064,939				19,064	1,540,210			
September	6,509	1,003,008				23,494	1,462,871			
October	7,148	1,085,746				26,707	1,620,352			
November	10,254	816,594				22,817	1,146,640			
December	3,905	908,172				19,423	1,045,282			
<b>Total thru July</b>	<b>33,693</b>	<b>8,114,859</b>	<b>4,589,431</b>	<b>13521.32%</b>	<b>-43.44%</b>	<b>176,980</b>	<b>11,192,846</b>	<b>4,731,934</b>	<b>2573.71%</b>	<b>-57.72%</b>
<b>Annual Total</b>	<b>67,808</b>	<b>12,988,513</b>	<b>4,589,431</b>			<b>288,485</b>	<b>18,008,201</b>	<b>4,731,972</b>		



## FEDEX

	ENPLANED CARGO & FREIGHT					DEPLANED CARGO & FREIGHT				
	1987	2008	2009	% Change 87-2009	% Change 2008-2009	1987	2008	2009	% Change 87-2009	% Change 2008-2009
January	0	870,732	715,678	N/A	-17.81%	0	976,067	939,152	N/A	-3.78%
February	0	839,826	458,660	N/A	-45.39%	0	986,041	585,302	N/A	-40.64%
March	0	832,812	545,702	N/A	-34.47%	0	966,259	559,596	N/A	-42.09%
April	0	902,615	662,738	N/A	-26.58%	0	1,041,227	588,658	N/A	-43.46%
May	0	887,145	646,092	N/A	-27.17%	0	1,025,009	562,225	N/A	-45.15%
June	0	850,739	648,497	N/A	-23.77%	0	1,020,445	612,993	N/A	-39.93%
July	0	832,637	704,960	N/A	-15.33%	0	1,081,087	634,876	N/A	-41.27%
August	0	774,265				0	1,065,428			
September	0	715,516				0	994,570			
October	0	824,642				0	1,109,449			
November	0	667,959				0	866,734			
December	0	841,807				0	1,029,399			
Total thru July	0	6,016,506	4,382,327	N/A	-27.16%	0	7,096,135	4,482,802	N/A	-36.83%

## GVA

	ENPLANED CARGO & FREIGHT					DEPLANED CARGO & FREIGHT				
	1987	2008	2009	% Change 87-2009	% Change 2008-2009	1987	2008	2009	% Change 87-2009	% Change 2008-2009
January	0	40	0	N/A	N/A	0	0	0	N/A	N/A
February	0	8,976	0	N/A	N/A	0	2,060	0	N/A	N/A
March	0	1,008	0	N/A	N/A	0	31	0	N/A	N/A
April	0	1,793	0	N/A	N/A	0	0	0	N/A	N/A
May	0	95,081	0	N/A	N/A	0	231,046	0	N/A	N/A
June	0	129,326	0	N/A	N/A	0	1,074,485	0	N/A	N/A
July	0	0	0	N/A	N/A	0	0	0	N/A	N/A
August	0	250				0	6,220			
September	0	11,748				0	10,000			
October	0	10				0	0			
November	0	0				0	0			
December	0	3,910				0	0			
Total thru July	0	236,224	0	N/A	-100.00%	0	1,307,622	0	N/A	-100.00%

## AIRBORNE

	ENPLANED CARGO & FREIGHT					DEPLANED CARGO & FREIGHT				
	1987	2008	2009	% Change 87-2009	% Change 2008-2009	1987	2008	2009	% Change 87-2009	% Change 2008-2009
January	0	158,619	0	N/A	N/A	0	360,700	0	N/A	N/A
February	0	153,865	0	N/A	N/A	0	294,741	0	N/A	N/A
March	0	201,341	0	N/A	N/A	0	298,884	0	N/A	N/A
April	0	169,401	0	N/A	N/A	0	357,939	0	N/A	N/A
May	0	159,640	0	N/A	N/A	0	380,323	0	N/A	N/A
June	0	246,821	0	N/A	N/A	0	445,463	0	N/A	N/A
July	0	239,609	0	N/A	N/A	0	467,483	0	N/A	N/A
August	0	231,286				0	445,980			
September	0	219,903				0	432,950			
October	0	194,008				0	476,602			
November	0	96,999				0	260,875			
December	0	0				0	0			
Total thru July	0	1,329,296	0	N/A	-100.00%	0	2,605,533	0	N/A	-100.00%

## AMERICAN EAGLE

	ENPLANED CARGO & FREIGHT					DEPLANED CARGO & FREIGHT				
	1987	2008	2009	% Change 87-2009	% Change 2008-2009	1987	2008	2009	% Change 87-2009	% Change 2008-2009
January	0	258	63	N/A	-75.58%	0	77	33	N/A	-57.14%
February	0	7	60	N/A	757.14%	0	166	68	N/A	-59.04%
March	0	172	51	N/A	-70.35%	0	100	12	N/A	-88.00%
April	0	123	53	N/A	-56.91%	0	34	46	N/A	35.29%
May	0	28	59	N/A	110.71%	0	53	14	N/A	-73.58%
June	0	77	63	N/A	-18.18%	0	51	5	N/A	-90.20%
July	0	46				0	35			
August	0	44				0	44			
September	0	43				0	14			
October	0	54				0	83			
November	0	54				0	117			
December	0	45				0	2			
Total thru July	0	711	349	N/A	N/A	0	516	178	N/A	N/A

## NORTHWEST (MESABA)

	ENPLANED CARGO & FREIGHT					DEPLANED CARGO & FREIGHT				
	1987	2008	2009	% Change 87-2009	% Change 2008-2009	1987	2008	2009	% Change 87-2009	% Change 2008-2009
January	120	101	50	-58.33%	-50.50%	837	67	0	-100.00%	N/A
February	310	205	155	-50.00%	-24.39%	1,649	240	0	N/A	N/A
March	256	267	42	-83.59%	-84.27%	2,098	43	9	-99.57%	-79.07%
April	0	231	29	N/A	-87.45%	0	89	26	N/A	-70.79%
May	0	198	4	N/A	-97.98%	0	179	95	N/A	-46.93%
June	0	87	0	N/A	N/A	0	102	0	N/A	N/A
July	0	129	0	N/A	N/A	0	140	0	N/A	N/A
August	0	98				0	623			
September	0	409				0	192			
October	0	74				0	162			
November	0	276				0	7			
December	0	133				0	12			
Total thru July	686	1,218	280	-59.18%	-77.01%	4,584	860	130	-97.16%	-84.88%

## MIDWEST CONNECT

	ENPLANED CARGO & FREIGHT					DEPLANED CARGO & FREIGHT				
	1987	2008	2009	% Change 87-2009	% Change 2008-2009	1987	2008	2009	% Change 87-2009	% Change 2008-2009
January	0	0	0	N/A	N/A	0	500	0	N/A	N/A
February	0	0	0	N/A	N/A	0	846	23	N/A	-97.28%
March	0	0	0	N/A	N/A	0	249	0	N/A	N/A
April	0	0	0	N/A	N/A	0	588	188	N/A	-68.03%
May	0	0	0	N/A	N/A	0	77	20	N/A	-74.03%
June	0	0	0	N/A	N/A	0	83	40	N/A	-51.81%
July	0	0	0	N/A	N/A	0	133	12	N/A	-90.98%
August	0	0				0	181			
September	0	0				0	86			
October	0	0				0	0			
November	0	0				0	100			
December	0	0				0	0			
Total thru July	0	0	0	N/A	N/A	0	2,476	283	N/A	-88.57%

## EAGLE AIR CARGO

	ENPLANED CARGO & FREIGHT					DEPLANED CARGO & FREIGHT				
	1987	2008	2009	% Change 87-2009	% Change 2008-2009	1987	2008	2009	% Change 87-2009	% Change 2008-2009
January	0	19977	0	N/A	N/A	0	8,298	0	N/A	N/A
February	0	25942	0	N/A	N/A	0	10,234	0	N/A	N/A
March	0	24500	0	N/A	N/A	0	6,612	0	N/A	N/A
April	0	29470	0	N/A	N/A	0	8,328	0	N/A	N/A
May	0	39216	0	N/A	N/A	0	9,346	0	N/A	N/A
June	0	0	0	N/A	N/A	0	0	0	N/A	N/A
July	0	0	0	N/A	N/A	0	0	0	N/A	N/A
August	0	0				0	0			
September	0	0				0	0			
October	0	0				0	0			
November	0	0				0	0			
December	0	0				0	0			
Total thru July	0	139,105	0	N/A	N/A	0	42,818	0	N/A	N/A

## CSA Air, Inc.

	ENPLANED CARGO & FREIGHT					DEPLANED CARGO & FREIGHT				
	1987	2008	2009	% Change 87-2009	% Change 2008-2009	1987	2008	2009	% Change 87-2009	% Change 2008-2009
January	0	51,260	27,956	N/A	N/A	0	16,894	22,030	N/A	N/A
February	0	51,917	26,074	N/A	-49.78%	0	18,002	133,966	N/A	644.17%
March	0	54,073	28,865	N/A	-46.62%	0	18,228	14,675	N/A	-19.49%
April	0	53,504	25,909	N/A	-51.58%	0	17,996	15,534	N/A	-13.68%
May	0	58,385	30,290	N/A	-48.12%	0	17,505	18,311	N/A	4.60%
June	0	62,080	30,513	N/A	-50.85%	0	23,976	20,698	N/A	-13.67%
July	0	60,580	36,559	N/A	-39.65%	0	24,285	23,317	N/A	-3.99%
August	0	58,839				0	21,734			
September	0	55,259				0	25,059			
October	0	66,720				0	34,056			
November	0	51,247				0	18,807			
December	0	57,158				0	15,869			
Total thru July	0	391,799	206,166	N/A	-47.38%	0	136,886	248,531	N/A	81.56%

## AIRTRAN

	ENPLANED CARGO & FREIGHT			% Change	% Change	DEPLANED CARGO & FREIGHT			% Change	% Change
	1987	2008	2009	87-2009	2008-2009	1987	2008	2009	87-2009	2008-2009
January	0	0	0	N/A	N/A	0	0	0	0	N/A
February	0	0	0	N/A	N/A	0	0	0	0	N/A
March	0	0	0	N/A	N/A	0	0	0	0	N/A
April	0	0	0	N/A	N/A	0	0	0	0	N/A
May	0	0	0	N/A	N/A	0	0	0	0	N/A
June	0	0	0	N/A	N/A	0	0	0	0	N/A
July	0	0	0	N/A	N/A	0	0	0	0	N/A
August	0	0				0	0			
September	0	0				0	0			
October	0	0				0	0			
November	0	0				0	0			
December	0	0				0	0			
Total thru July	0	0	0	N/A	N/A	0	0	0	N/A	N/A

## PRIOR CARRIERS

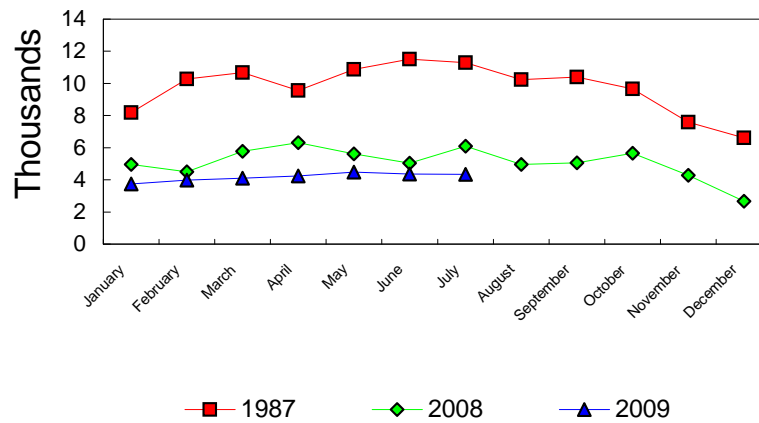
	ENPLANED CARGO & FREIGHT			% Change	% Change	DEPLANED CARGO & FREIGHT			% Change	% Change
	1987	2008	2009	87-2009	2008-2009	1987	2008	2009	87-2009	2008-2009
January	3,540	0	104	-97.06%	N/A	15,720	0	0	0	N/A
February	3,272	0	40	-98.78%	N/A	28,748	0	0	0	N/A
March	4,012	0	32	-99.20%	N/A	20,915	0	0	0	N/A
April	3,747	0	45	-98.80%	N/A	30,094	0	6	-99.98%	N/A
May	3,219	0	59	-0.98167133	N/A	28,459	0	14	-99.95%	N/A
June	9,901	195	0	-100.00%	N/A	27,135	0	18	-99.93%	N/A
July	5,316	0	29	-99.45%	N/A	21,325	0	10	-99.95%	N/A
August	6,299	157				19,064	0			
September	6,509	130				23,494	0			
October	7,148	238				26,707	0			
November	10,254	59				22,817	0			
December	3,905	119				19,423	0			
Total thru July	33,007	195	309	N/A	N/A	172,396	0	48	N/A	N/A

# OPERATIONS STATISTICAL COMPARISON

FOR YEARS 1987, 2008 & 2009

	1987 OPERATIONS	2008 OPERATIONS	2009 OPERATIONS	CHANGE 1987/2009	CHANGE 2008/2009
January	8,177	4,961	3,739	-54.27%	-24.63%
February	10,270	4,491	3,981	-61.24%	-11.36%
March	10,677	5,784	4,095	-61.65%	-29.20%
April	9,562	6,307	4,248	-55.57%	-32.65%
May	10,870	5,611	4,480	-58.79%	-20.16%
June	11,514	5,033	4,355	-62.18%	-13.47%
July	11,296	6,096	4,348	-61.51%	-28.67%
August	10,240	4,965			
September	10,389	5,050			
October	9,656	5,651			
November	7,592	4,273			
December	6,608	2,660			
Total Through July	72,366	38,283	29,246	-59.59%	-23.61%
ANNUAL TOTAL	116,851	60,882	29,246		

## OPERATIONS Pre-Authority vs 2008 & 2009



**BISHOP INTERNATIONAL AIRPORT  
AIR TRAFFIC RECORD 2009**

MONTH	ITINERANT AIRCRAFT				LOCAL AIRCRAFT			TOTAL OPERATIONS	CUMULATIVE OPERATIONS	
	AIR CARRIER	AIR TAXI	GENERAL AVIATION	MILITARY	TOTAL ITINERANT	CIVILIAN	MILITARY			TOTAL LOCAL
JANAURY	821	931	827	6	2,585	1,154		1,154	3,739	3,739
FEBRUARY	759	767	866	13	2,405	1,576		1,576	3,981	7,720
MARCH	927	754	1,237	5	2,923	1,172		1,172	4,095	11,815
APRIL	887	828	1,096	19	2,830	1,418		1,418	4,248	16,063
MAY	848	730	1,566	26	3,170	1,308	2	1,310	4,480	20,543
JUNE	773	917	1,344	21	3,055	1,300		1,300	4,355	24,898
JULY	816	1,025	1,364	12	3,217	1,129	2	1,131	4,348	29,246
AUGUST					0			0	0	0
SEPTEMBER					0			0	0	0
OCTOBER					0			0	0	0
NOVEMBER					0			0	0	0
DECEMBER					0			0	0	0
<b>TOTALS</b>	<b>5,831</b>	<b>5,952</b>	<b>8,300</b>	<b>102</b>	<b>20,185</b>	<b>9,057</b>	<b>4</b>	<b>9,061</b>	<b>29,246</b>	