

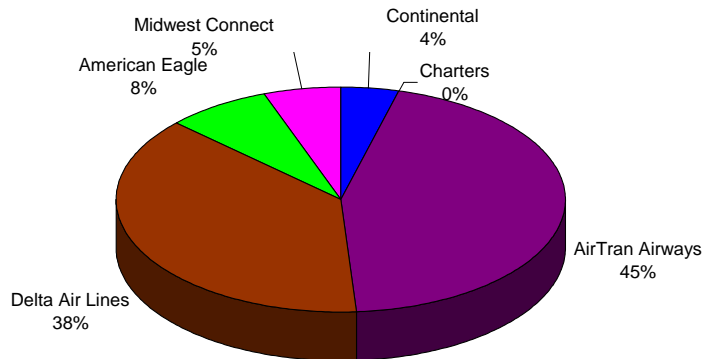
**BISHOP INTERNATIONAL AIRPORT AUTHORITY  
AIRLINE PASSENGER COMPARISON  
CALENDAR YEARS 2009 AND 2010**

ENPLANEMENTS	NORTHWEST/MESABA			AIRTRAN AIRWAYS			DELTA			AMERICAN EAGLE		
	2009	2010	% Change	2009	2010	% Change	2009	2010	% Change	2009	2010	% Change
January	8,023	0	N/A	17,933	18,533	3.35%	6,764	15,247	125.41%	3,364	3,093	-8.06%
February	7,456	0	N/A	18,386	19,181	4.32%	7,379	15,468	109.62%	3,283	3,333	1.52%
March	9,003	0	N/A	19,419	20,839	7.31%	8,861	18,776	111.89%	3,462	3,524	1.79%
April	7,254			16,913			8,470			3,581		
May	7,707			12,933			7,764			3,648		
June	8,316			14,002			9,475			3,752		
July	10,885			15,923			10,112			3,978		
August	9,893			16,231			9,870			3,631		
September	8,689			12,804			8,157			3,247		
October	8,565			16,129			9,570			3,710		
November	8,041			17,397			7,834			3,517		
December	8,444			18,776			7,435			3,032		
Through March	24,482	0	-100.00%	55,738	58,553	5.05%	23,004	49,491	115.14%	10,109	9,950	-1.57%

ENPLANEMENTS	MIDWEST CONNECT			CONTINENTAL			CHARTERS		
	2009	2010	% Change	2009	2010	% Change	2009	2010	% Change
January	1,527	2,326	52.32%	1,227	1,452	18.34%	151	0	-100.00%
February	1,692	2,302	36.05%	1,630	1,837	12.70%	0	148	N/A
March	1,852	2,533	36.77%	1,944	2,120	9.05%	0	0	N/A
April	2,115			1,848			159		
May	2,281			1,526			0		
June	2,499			1,753			0		
July	2,533			2,088			0		
August	2,652			2,084			0		
September	2,308			1,618			161		
October	2,231			1,584			0		
November	2,571			1,713			0		
December	2,311			2,024			0		
Through March	5,071	7,161	41.21%	4,801	5,409	12.66%	151	148	N/A

Latest Stats.\*\*      Nov    Jan-Nov 2009  
National avg.        2.07%    -5.52%  
Bishop Airport      7.43%    -7.73%

**ENPLANEMENT SHARE BY AIRLINE  
Calendar Year 2010**



\*\* RITA Bureau of Transportation Statistics

	TOTAL		
	2009	2010	% Change
January	38,989	40,651	4.26%
February	39,826	42,269	6.13%
March	44,541	47,792	7.30%
April	40,340	0	
May	35,859	0	
June	39,797	0	
July	45,519	0	
August	44,361	0	
September	36,984	0	
October	41,789	0	
November	41,073	0	
December	42,022	0	
Through March	123,356	130,712	5.96%
Total Year	491,100	130,712	

■ AirTran Airways    ■ Delta Air Lines    ■ American Eagle  
■ Midwest Connect    ■ Continental        ■ Charters

**BISHOP INTERNATIONAL AIRPORT AUTHORITY  
AIRLINE LOAD FACTOR ANALYSIS**

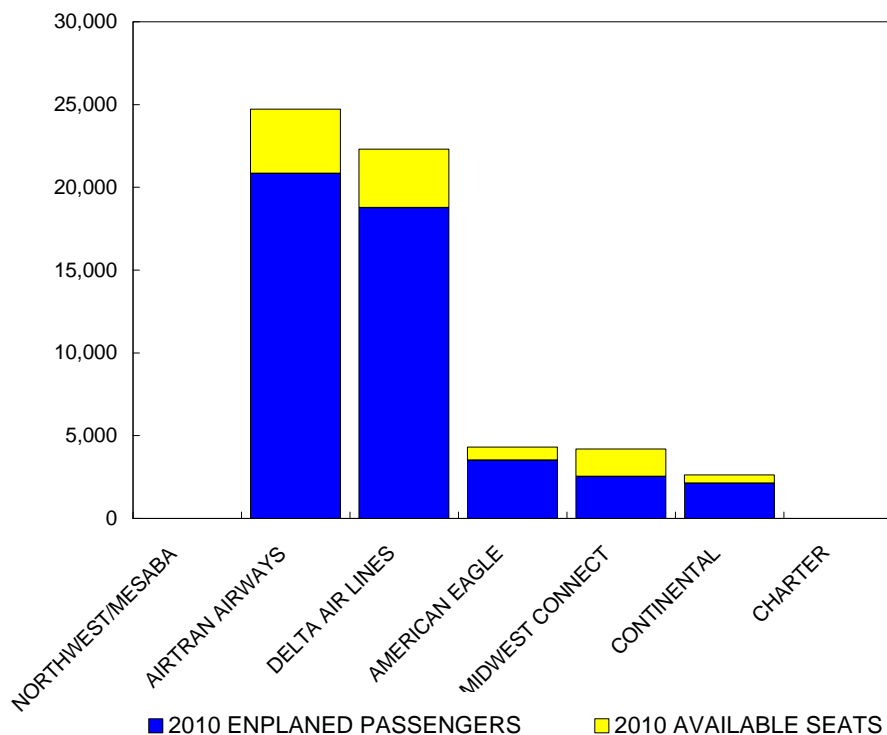
3/1/2010

2009

2010

AIRLINE	AVAILABLE SEATS	ENPLANED PAX	LOAD FACTOR	AVAILABLE SEATS	ENPLANED PAX	LOAD FACTOR
NORTHWEST/MESABA	12,590	9,003	71.51%	0	0	N/A
AIRTRAN AIRWAYS	21,528	19,419	90.20%	24,731	20,839	84.26%
DELTA AIR LINES	10,200	8,861	86.87%	22,312	18,776	84.15%
AMERICAN EAGLE	4,229	3,462	81.86%	4,306	3,524	81.84%
MIDWEST CONNECT	4,100	1,852	45.17%	4,192	2,533	60.42%
CONTINENTAL	3,108	1,944	62.55%	2,627	2,120	80.70%
CHARTER	0	0	N/A	0	0	N/A
ALL AIRLINES	55,755	44,541	79.89%	58,168	47,792	82.16%

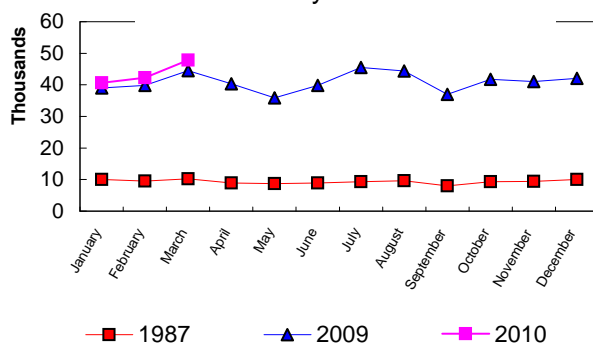
**Enplanements vs Available Seats  
Current Month**



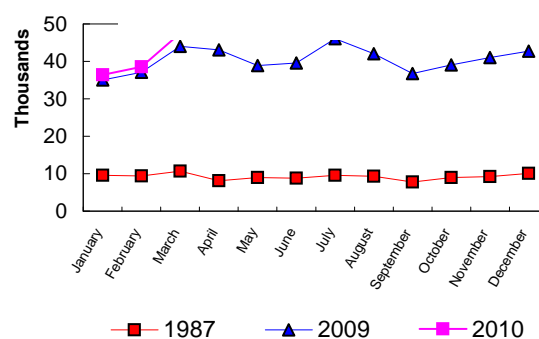
**BISHOP INTERNATIONAL AIRPORT  
PASSENGER STATISTICAL COMPARISON  
FOR THE YEARS 1987, 2009, 2010**

	<b>ENPLANED PASSENGERS</b>			<b>% CHANGE</b>	<b>% CHANGE</b>
	1987	2009	2010	1987/2010	2009/2010
January	10,008	38,989	40,651	306.19%	4.26%
February	9,544	39,826	42,269	342.89%	6.13%
March	10,287	44,541	47,792	364.59%	7.30%
April	8,967	40,340			
May	8,685	35,859			
June	8,891	39,797			
July	9,372	45,519			
August	9,586	44,361			
September	8,038	36,984			
October	9,350	41,789			
November	9,402	41,073			
December	10,010	42,022			
<b>Total thru March</b>	<b>29,839</b>	<b>123,356</b>	<b>130,712</b>	<b>338.06%</b>	<b>5.96%</b>
<b>Total for Year</b>	<b>112,140</b>	<b>491,100</b>	<b>130,712</b>		

**ENPLANEMENT COMPARISON**  
Pre-Authority vs 2009 & 2010



**DEPLANEMENT COMPARISON**  
Pre-Authority vs 2009 & 2010



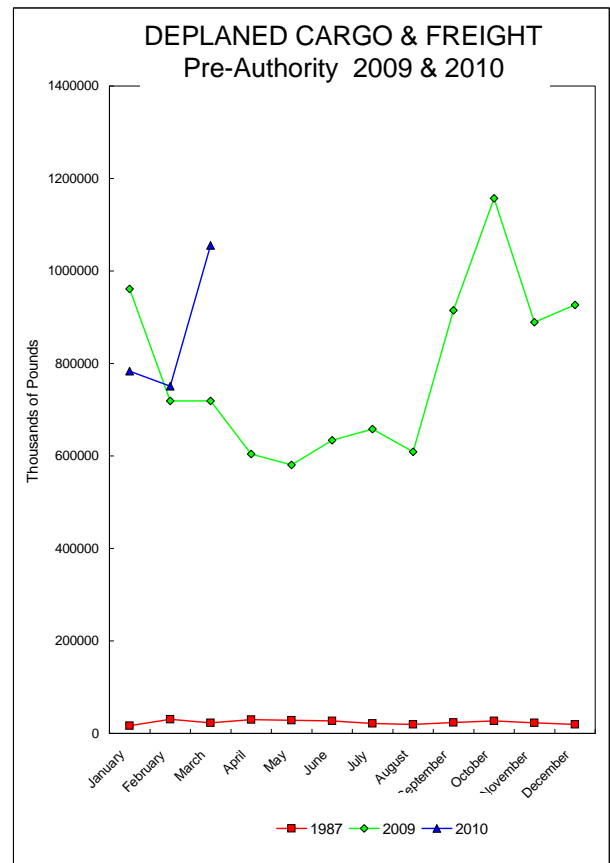
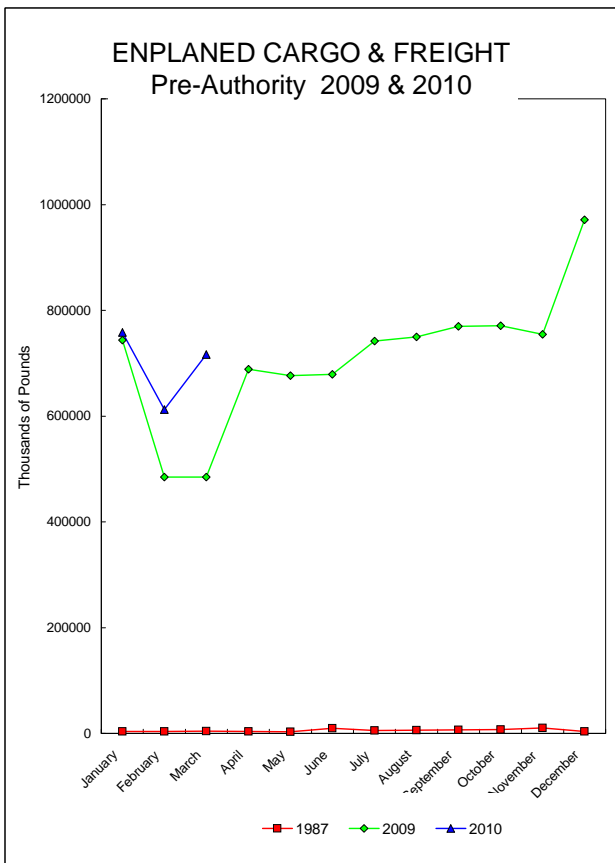
	<b>DEPLANED PASSENGERS</b>			<b>% CHANGE</b>	<b>% CHANGE</b>
	1987	2009	2010	1987/2010	2009/2010
January	9,542	35,013	36,396	281.43%	3.95%
February	9,380	37,122	38,529	310.76%	3.79%
March	10,646	43,994	47,551	346.66%	8.09%
April	8,139	43,119			
May	8,969	38,854			
June	8,795	39,569			
July	9,592	46,075			
August	9,331	42,012			
September	7,740	36,714			
October	9,005	39,097			
November	9,235	41,005			
December	10,114	42,724			
<b>Total thru March</b>	<b>29,568</b>	<b>116,129</b>	<b>122,476</b>	<b>314.22%</b>	<b>5.47%</b>
<b>Total for Year</b>	<b>110,488</b>	<b>485,298</b>	<b>122,476</b>		

<b>Total all current month</b>	<b>59,407</b>	<b>239,485</b>	<b>253,188</b>
<b>Total all for the year</b>	<b>222,628</b>	<b>976,398</b>	<b>253,188</b>

## BISHOP INTERNATIONAL AIRPORT AIR CARGO AND FREIGHT COMPARISON Pre-Authority(1987) 2009 & 2010

**TOTAL AIR CARGO AND FREIGHT**

	ENPLANED CARGO & FREIGHT			% Change 87-2010	% Change 2009-2010	DEPLANED CARGO & FREIGHT			% Change 87-2010	% Change 2009-2010
	1987	2009	2010			1987	2009	2010		
January	3,660	743,851	<b>758,243</b>	20617.02%	1.93%	16,557	961,215	<b>783,074</b>	4629.56%	-18.53%
February	3,582	484,989	<b>612,518</b>	16999.89%	26.30%	30,397	719,359	<b>751,047</b>	2370.79%	4.41%
March	4,268	484,989	<b>716,316</b>	16683.41%	47.70%	23,013	719,359	<b>1,055,077</b>	4484.70%	46.67%
April	3,747	688,774				30,094	604,458			
May	3,219	676,504				28,459	580,679			
June	9,901	679,073				27,135	633,754			
July	5,316	741,605				21,325	658,224			
August	6,299	749,498				19,064	608,992			
September	6,509	769,951				23,494	914,658			
October	7,148	771,062				26,707	1,157,152			
November	10,254	754,719				22,817	889,027			
December	3,905	971,301				19,423	926,354			
<b>Total thru March</b>	<b>11,510</b>	<b>1,803,532</b>	<b>2,087,077</b>	<b>18032.73%</b>	<b>15.72%</b>	<b>69,967</b>	<b>2,254,866</b>	<b>2,589,198</b>	<b>3600.60%</b>	<b>14.83%</b>
<b>Annual Total</b>	<b>67,808</b>	<b>8,516,316</b>	<b>2,087,077</b>			<b>288,485</b>	<b>9,373,231</b>	<b>2,589,198</b>		



## FEDEX

	ENPLANED CARGO & FREIGHT					DEPLANED CARGO & FREIGHT				
	1987	2009	2010	% Change 87-2010	% Change 2009-2010	1987	2009	2010	% Change 87-2010	% Change 2009-2010
January	0	715,678	730,129	N/A	2.02%	0	939,152	752,475	N/A	-19.88%
February	0	458,660	588,262	N/A	28.26%	0	585,302	717,276	N/A	22.55%
March	0	545,702	683,662	N/A	25.28%	0	559,596	1,036,554	N/A	85.23%
April	0	662,738				0	588,658			
May	0	646,092				0	562,225			
June	0	648,497				0	612,993			
July	0	704,960				0	634,876			
August	0	714,030				0	582,020			
September	0	733,322				0	679,842			
October	0	739,096				0	741,488			
November	0	726,534				0	824,805			
December	0	937,824				0	895,436			
Total thru March	0	1,720,040	2,002,053	N/A	16.40%	0	2,084,050	2,506,305	N/A	20.26%

## GVA

	ENPLANED CARGO & FREIGHT					DEPLANED CARGO & FREIGHT				
	1987	2009	2010	% Change 87-2010	% Change 2009-2010	1987	2009	2010	% Change 87-2010	% Change 2009-2010
January	0	0	0	N/A	N/A	0	0	10,968	N/A	N/A
February	0	0	0	N/A	N/A	0	0	17,485	N/A	N/A
March	0	0	0	N/A	N/A	0	0	0	N/A	N/A
April	0	0				0	0			
May	0	0				0	0			
June	0	0				0	0			
July	0	0				0	0			
August	0	2,684				0	2,392			
September	0	4,151				0	217,311			
October	0	0				0	392,674			
November	0	0				0	45,665			
December	0	234				0	12,221			
Total thru March	0	0	0	N/A	N/A	0	0	28,453	N/A	N/A

## DELTA/ASA

	ENPLANED CARGO & FREIGHT					DEPLANED CARGO & FREIGHT				
	1987	2009	2010	% Change 87-2010	% Change 2009-2010	1987	2009	2010	% Change 87-2010	% Change 2009-2010
January	0	104	0	N/A	N/A	0	0	0	N/A	N/A
February	0	40	0	N/A	N/A	0	0	0	N/A	N/A
March	0	32	0	N/A	N/A	0	0	0	N/A	N/A
April	0	45				0	6			
May	0	59				0	14			
June	0	0				0	18			
July	0	29				0	10			
August	0	27				0	0			
September	0	6				0	0			
October	0	0				0	8			
November	0	250				0	0			
December	0	0				0	1			
Total thru March	0	176	0	N/A	N/A	0	0	0	N/A	N/A

## AMERICAN EAGLE

	ENPLANED CARGO & FREIGHT					DEPLANED CARGO & FREIGHT				
	1987	2009	2010	% Change 87-2010	% Change 2009-2010	1987	2009	2010	% Change 87-2010	% Change 2009-2010
January	0	63	71	N/A	12.70%	0	33	21	N/A	-36.36%
February	0	60	73	N/A	21.67%	0	68	7	N/A	-89.71%
March	0	51	83	N/A	62.75%	0	12	44	N/A	266.67%
April	0	53				0	46			
May	0	59				0	14			
June	0	63				0	5			
July	0	57				0	9			
August	0	62				0	6			
September	0	63				0	2			
October	0	69				0	14			
November	0	66				0	6			
December	0	70				0	36			
Total thru March	0	174	227	N/A	N/A	0	113	72	N/A	N/A

## NORTHWEST (MESABA)

	ENPLANED CARGO & FREIGHT					DEPLANED CARGO & FREIGHT				
	1987	2009	2010	% Change 87-2010	% Change 2009-2010	1987	2009	2010	% Change 87-2010	% Change 2009-2010
January	120	50	278	131.67%	N/A	837	0	1,477	76.46%	N/A
February	310	155	0	N/A	N/A	1,649	0	0	N/A	N/A
March	256	42	0	N/A	N/A	2,098	9	0	N/A	N/A
April	0	29				0	26			
May	0	4				0	95			
June	0	0				0	0			
July	0	0				0	0			
August	0	57				0	650			
September	0	0				0	204			
October	0	28				0	707			
November	0	56				0	677			
December	0	344				0	130			
Total thru March	686	247	278	-59.48%	12.55%	4,584	9	1,477	-67.78%	N/A

## MIDWEST CONNECT

	ENPLANED CARGO & FREIGHT					DEPLANED CARGO & FREIGHT				
	1987	2009	2010	% Change 87-2010	% Change 2009-2010	1987	2009	2010	% Change 87-2010	% Change 2009-2010
January	0	0	0	N/A	N/A	0	0	0	N/A	N/A
February	0	0	0	N/A	N/A	0	23	1	N/A	N/A
March	0	0	0	N/A	N/A	0	0	3	N/A	N/A
April	0	0				0	188			
May	0	0				0	20			
June	0	0				0	40			
July	0	0				0	12			
August	0	0				0	0			
September	0	0				0	26			
October	0	0				0	56			
November	0	0				0	38			
December	0	0				0	19			
Total thru March	0	0	0	N/A	N/A	0	23	4	N/A	-82.61%

## EAGLE AIR CARGO

	ENPLANED CARGO & FREIGHT					DEPLANED CARGO & FREIGHT				
	1987	2009	2010	% Change 87-2010	% Change 2009-2010	1987	2009	2010	% Change 87-2010	% Change 2009-2010
January	0	0	0	N/A	N/A	0	0	0	N/A	N/A
February	0	0	0	N/A	N/A	0	0	0	N/A	N/A
March	0	0	0	N/A	N/A	0	0	0	N/A	N/A
April	0	0				0	0			
May	0	0				0	0			
June	0	0				0	0			
July	0	0				0	0			
August	0	0				0	0			
September	0	0				0	0			
October	0	0				0	0			
November	0	0				0	0			
December	0	0				0	0			
Total thru March	0	0	0	N/A	N/A	0	0	0	N/A	N/A

## CSA Air, Inc.

	ENPLANED CARGO & FREIGHT					DEPLANED CARGO & FREIGHT				
	1987	2009	2010	% Change 87-2010	% Change 2009-2010	1987	2009	2010	% Change 87-2009	% Change 2009-2010
January	0	27,956	27,765	N/A	N/A	0	22,030	18,133	N/A	N/A
February	0	26,074	24,183	N/A	-7.25%	0	133,966	16,278	N/A	-87.85%
March	0	28,865	32,571	N/A	12.84%	0	14,675	18,476	N/A	25.90%
April	0	25,909				0	15,534			
May	0	30,290				0	18,311			
June	0	30,513				0	20,698			
July	0	36,559				0	23,317			
August	0	32,638				0	23,924			
September	0	32,409				0	17,273			
October	0	31,869				0	22,205			
November	0	27,813				0	17,836			
December	0	32,829				0	18,511			
Total thru March	0	82,895	84,519	N/A	1.96%	0	170,671	52,887	N/A	-69.01%

## AIRTRAN

	ENPLANED CARGO & FREIGHT					DEPLANED CARGO & FREIGHT				
	1987	2009	2010	% Change 87-2010	% Change 2009-2010	1987	2009	2010	% Change 87-2010	% Change 2009-2010
January	0	0	0	N/A	N/A	0	0	0	N/A	N/A
February	0	0	0	N/A	N/A	0	0	0	N/A	N/A
March	0	0	0	N/A	N/A	0	0	0	N/A	N/A
April	0	0				0	0			
May	0	0				0	0			
June	0	0				0	0			
July	0	0				0	0			
August	0	0				0	0			
September	0	0				0	0			
October	0	0				0	0			
November	0	0				0	0			
December	0	0				0	0			
Total thru March	0	0	0	N/A	N/A	0	0	0	N/A	N/A

## PRIOR CARRIERS

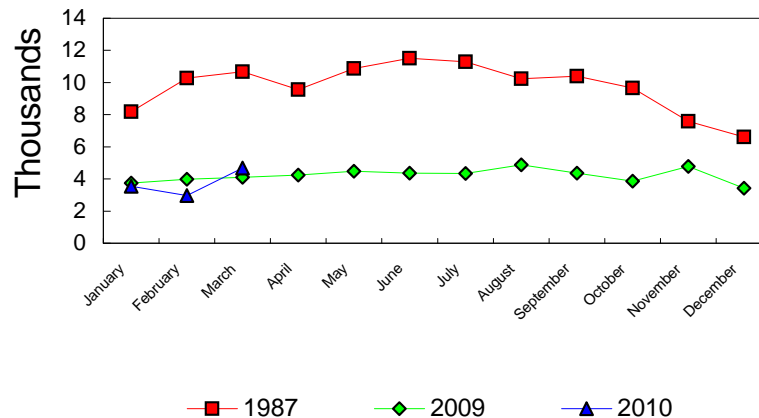
	ENPLANED CARGO & FREIGHT					DEPLANED CARGO & FREIGHT				
	1987	2009	2010	% Change 87-2010	% Change 2009-2010	1987	2009	2010	% Change 87-2010	% Change 2009-2010
January	3,540	0	0	-100.00%	N/A	15,720	0	0	N/A	N/A
February	3,272	0	0	N/A	N/A	28,748	0	0	N/A	N/A
March	4,012	0	0	N/A	N/A	20,915	0	0	N/A	N/A
April	3,747	0				30,094	0			
May	3,219	0				28,459	0			
June	9,901	0				27,135	0			
July	5,316	0				21,325	0			
August	6,299	0				19,064	0			
September	6,509	0				23,494	0			
October	7,148	0				26,707	0			
November	10,254	0				22,817	0			
December	3,905	0				19,423	0			
Total thru March	10,824	0	0	N/A	N/A	65,383	0	0	N/A	N/A

# OPERATIONS STATISTICAL COMPARISON

FOR YEARS 1987, 2009 & 2010

	1987 OPERATIONS	2009 OPERATIONS	2010 OPERATIONS	CHANGE 1987/2010	CHANGE 2009/2010
January	8,177	3,739	<b>3,547</b>	-56.62%	-5.14%
February	10,270	3,981	<b>2,968</b>	-71.10%	-25.45%
March	10,677	4,095	<b>4,671</b>	-56.25%	14.07%
April	9,562	4,248			
May	10,870	4,480			
June	11,514	4,355			
July	11,296	4,348			
August	10,240	4,881			
September	10,389	4,366			
October	9,656	3,867			
November	7,592	4,770			
December	6,608	3,429			
Total Through March	29,124	11,815	<b>11,186</b>	-61.59%	-5.32%
ANNUAL TOTAL	116,851	50,559	<b>11,186</b>		

## OPERATIONS Pre-Authority vs 2009 & 2010



**BISHOP INTERNATIONAL AIRPORT  
AIR TRAFFIC RECORD 2010**

MONTH	ITINERANT AIRCRAFT					LOCAL AIRCRAFT			TOTAL OPERATIONS	CUMULATIVE OPERATIONS
	AIR CARRIER	AIR TAXI	GENERAL AVIATION	MILITARY	TOTAL ITINERANT	CIVILIAN	MILITARY	TOTAL LOCAL		
JANUARY	717	1,023	1,151	8	2,899	648	0	648	3,547	3,547
FEBRUARY	651	979	862	1	2,493	475	0	475	2,968	6,515
MARCH	725	1,142	1,563	13	3,443	1,228		1,228	4,671	11,186
APRIL					0			0	0	0
MAY					0			0	0	0
JUNE					0			0	0	0
JULY					0			0	0	0
AUGUST					0			0	0	0
SEPTEMBER					0			0	0	0
OCTOBER					0			0	0	0
NOVEMBER					0			0	0	0
DECEMBER					0			0	0	0
<b>TOTALS</b>	<b>2,093</b>	<b>3,144</b>	<b>3,576</b>	<b>22</b>	<b>8,835</b>	<b>2,351</b>	<b>0</b>	<b>2,351</b>	<b>11,186</b>	