

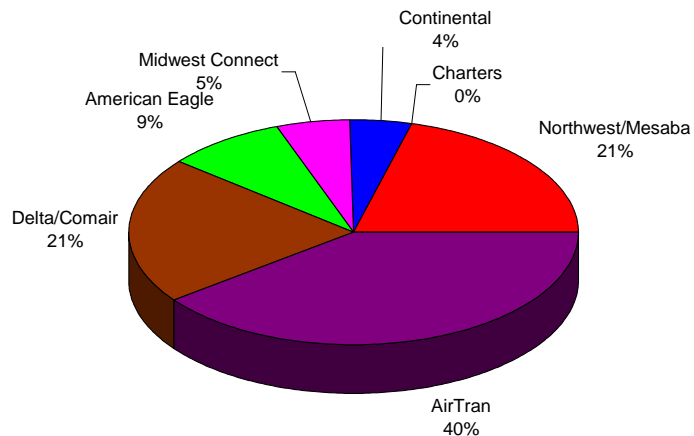
**BISHOP INTERNATIONAL AIRPORT AUTHORITY
AIRLINE PASSENGER COMPARISON
CALENDAR YEARS 2008 AND 2009**

ENPLANEMENTS	NORTHWEST/MESABA			AIRTRAN			DELTA/COMAIR/ASA			AMERICAN EAGLE		
	2008	2009	% Change	2008	2009	% Change	2008	2009	% Change	2008	2009	% Change
January	12,291	8,023	-34.72%	19,049	17,933	-5.86%	6,850	6,764	-1.26%	5,916	3,364	-43.14%
February	11,684	7,456	-36.19%	23,711	18,386	-22.46%	5,909	7,379	24.88%	4,989	3,283	-34.20%
March	16,416	9,003	-45.16%	23,928	19,419	-18.84%	6,878	8,861	28.83%	5,691	3,462	-39.17%
April	12,221	7,254	-40.64%	18,054	16,913	-6.32%	5,984	8,470	41.54%	5,068	3,581	-29.34%
May	11,505	7,707	-33.01%	15,312	12,933	-15.54%	5,811	7,764	33.61%	5,066	3,648	-27.99%
June	11,542	8,316	-27.95%	15,362	14,002	-8.85%	6,677	9,475	41.91%	5,416	3,752	-30.72%
July	11,752	10,885	-7.38%	16,037	15,923	-0.71%	7,073	10,112	42.97%	6,053	3,978	-34.28%
August	10,856	9,893	-8.87%	16,205	16,231	0.16%	6,833	9,870	44.45%	4,612	3,631	-21.27%
September	8,821	8,689	-1.50%	11,372	12,804	12.59%	7,118	8,157	14.60%	3,147	3,247	3.18%
October	8,461	8,565	1.23%	16,529	16,129	-2.42%	7,939	9,570	20.54%	3,422	3,710	8.42%
November	8,421	8,041	-4.51%	16,752	17,397	3.85%	7,154	7,834	9.51%	3,121	3,517	12.69%
December	10,045			16,772			7,564			3,057		
Through November	123,970	93,832	-24.31%	192,311	178,070	-7.41%	74,226	94,256	26.99%	52,501	39,173	-25.39%

ENPLANEMENTS	MIDWEST CONNECT			CONTINENTAL			CHARTERS		
	2008	2009	% Change	2008	2009	% Change	2008	2009	% Change
January	1,640	1,527	-6.89%	1,340	1,227	-8.43%	159	151	-5.03%
February	1,642	1,692	3.05%	1,497	1,630	8.88%	0	0	N/A
March	2,565	1,852	-27.80%	1,751	1,944	11.02%	0	0	N/A
April	2,794	2,115	-24.30%	1,780	1,848	3.82%	159	159	0.00%
May	2,895	2,281	-21.21%	1,853	1,526	-17.65%	0	0	N/A
June	3,137	2,499	-20.34%	1,675	1,753	4.66%	0	0	N/A
July	2,948	2,533	-14.08%	1,717	2,088	21.61%	0	0	N/A
August	2,646	2,652	0.23%	1,922	2,084	8.43%	0	0	N/A
September	1,990	2,308	15.98%	1,438	1,618	12.52%	0	161	N/A
October	1,810	2,231	23.26%	1,401	1,584	13.06%	157	0	N/A
November	1,626	2,571	58.12%	1,158	1,713	47.93%	0	0	N/A
December	2,088			1,575			0		
Through November	25,693	24,261	-5.57%	17,532	19,015	8.46%	475	471	N/A

Latest Stats.** July Jan-July 2009
National avg. -3.16% -8.01%
Bishop Airport -0.13% -14.14%

**ENPLANEMENT SHARE BY AIRLINE
Calendar Year 2009**



** RITA Bureau of Transportation Statistics

	TOTAL		% Change
	2008	2009	
January	47,245	38,989	-17.47%
February	49,432	39,826	-19.43%
March	57,229	44,541	-22.17%
April	46,060	40,340	-12.42%
May	42,442	35,859	-15.51%
June	43,809	39,797	-9.16%
July	45,580	45,519	-0.13%
August	43,074	44,361	2.99%
September	33,886	36,984	9.14%
October	39,719	41,789	5.21%
November	38,232	41,073	7.43%
December	41,101	0	
Through November	486,708	449,078	-7.73%
Total Year	527,809	449,078	

■ Northwest/Mesaba ■ AirTran ■ Delta/Comair
■ American Eagle ■ Midwest Connect ■ Continental
■ Charters

**BISHOP INTERNATIONAL AIRPORT AUTHORITY
AIRLINE LOAD FACTOR ANALYSIS**

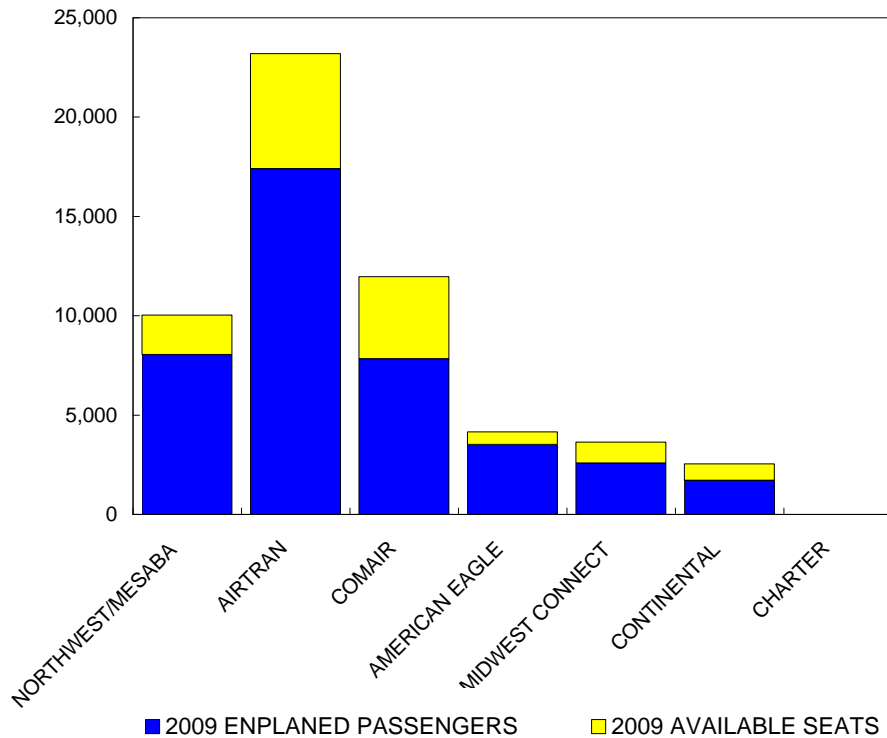
11/1/2009

2008

2009

AIRLINE	AVAILABLE SEATS	ENPLANED PAX	LOAD FACTOR	AVAILABLE SEATS	ENPLANED PAX	LOAD FACTOR
NORTHWEST/MESABA	15,804	8,421	53.28%	10,040	8,041	80.09%
AIRTRAN	22,260	16,752	75.26%	23,196	17,397	75.00%
COMAIR	10,020	7,154	71.40%	11,976	7,834	65.41%
AMERICAN EAGLE	3,779	3,121	82.59%	4,158	3,517	84.58%
MIDWEST CONNECT	3,850	1,626	42.23%	3,640	2,571	70.63%
CONTINENTAL	2,294	1,158	50.48%	2,553	1,713	67.10%
CHARTER	0	0	N/A	0	0	N/A
ALL AIRLINES	58,007	38,232	65.91%	55,563	41,073	73.92%

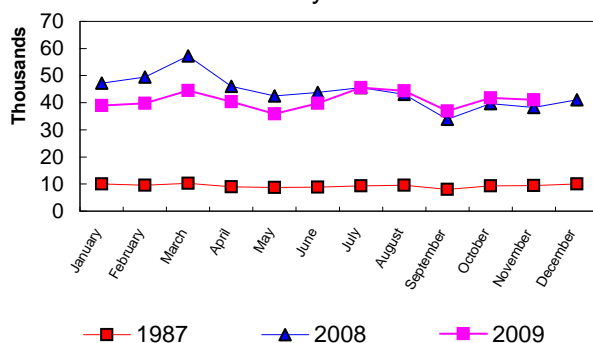
**Enplanements vs Available Seats
Current Month**



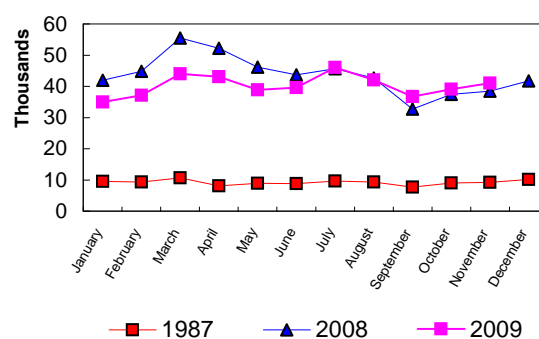
**BISHOP INTERNATIONAL AIRPORT
PASSENGER STATISTICAL COMPARISON
FOR THE YEARS 1987, 2008, 2009**

	ENPLANED PASSENGERS			% CHANGE	% CHANGE
	1987	2008	2009	1987/2009	2008/2009
January	10,008	47,245	38,989	289.58%	-17.47%
February	9,544	49,432	39,826	317.29%	-19.43%
March	10,287	57,229	44,541	332.98%	-22.17%
April	8,967	46,060	40,340	349.87%	-12.42%
May	8,685	42,442	35,859	312.88%	-15.51%
June	8,891	43,809	39,797	347.61%	-9.16%
July	9,372	45,580	45,519	385.69%	-0.13%
August	9,586	43,074	44,361	362.77%	2.99%
September	8,038	33,886	36,984	360.11%	9.14%
October	9,350	39,719	41,789	346.94%	5.21%
November	9,402	38,232	41,073	336.85%	7.43%
December	10,010	41,101			
Total thru November	102,130	486,708	449,078	339.71%	-7.73%
Total for Year	112,140	527,809	449,078		

ENPLANEMENT COMPARISON
Pre-Authority vs 2008 & 2009



DEPLANEMENT COMPARISON
Pre-Authority vs 2008 & 2009



	DEPLANED PASSENGERS			% CHANGE	% CHANGE
	1987	2008	2009	1987/2009	2008/2009
January	9,542	41,948	35,013	266.94%	-16.53%
February	9,380	44,852	37,122	295.76%	-17.23%
March	10,646	55,515	43,994	313.24%	-20.75%
April	8,139	52,171	43,119	429.78%	-17.35%
May	8,969	46,110	38,854	333.20%	-15.74%
June	8,795	43,716	39,569	349.90%	-9.49%
July	9,592	45,689	46,075	380.35%	0.84%
August	9,331	42,693	42,012	350.24%	-1.60%
September	7,740	32,667	36,714	374.34%	12.39%
October	9,005	37,478	39,097	334.17%	4.32%
November	9,235	38,462	41,005	344.02%	6.61%
December	10,114	41,703			
Total thru November	100,374	481,301	442,574	340.92%	-8.05%
Total for Year	110,488	523,004	442,574		

Total all current month	202,504	968,009	891,652
Total all for the year	222,628	1,050,813	891,652