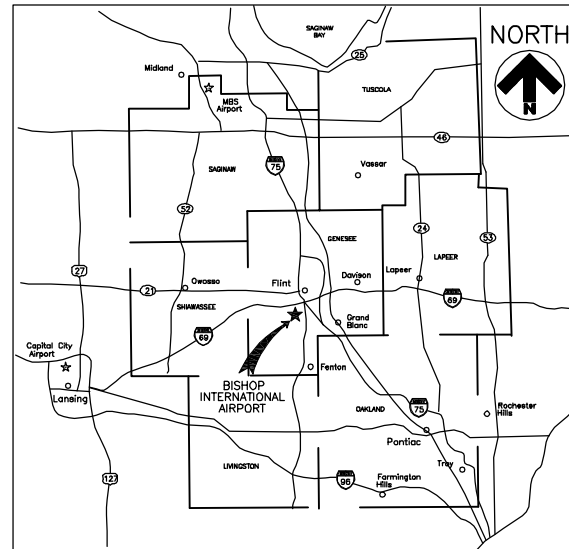


STATE OF MICHIGAN
 DEPARTMENT OF TRANSPORTATION
 BUREAU OF AERONAUTICS
 LANSING



VICINITY MAP

**BISHOP INTERNATIONAL AIRPORT
 FLINT, MICHIGAN**

**AIRPORT HEIGHT ZONING
 AND
 LAND USE PLANS**

**MAY, 1998
 UPDATED AUGUST, 2006
 UPDATED OCTOBER, 2011**

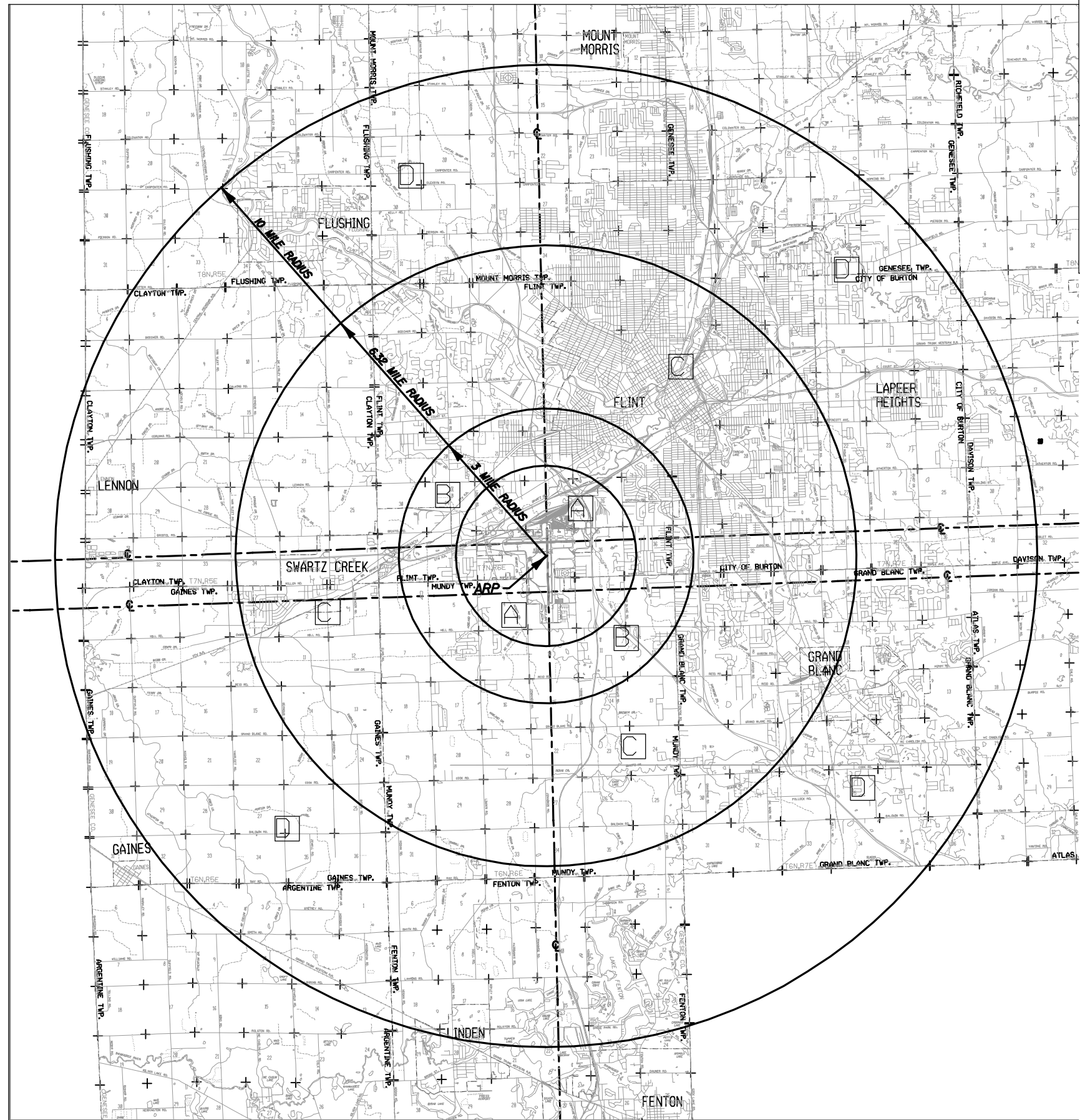
BISHOP INTERNATIONAL AIRPORT

AUTHORITY BOARD
 GUY BRIGGS
 WAYNE A. CARLSON
 WINFIELD L. COOPER
 LOYST FLETCHER, JR.
 MICHAEL P. MANLEY
 MICHAEL McNAMARA
 CAL RAPSON
 CLAUDIA F. SHELTON
 MARK YONAN
AIRPORT DIRECTOR
 JAMES L. RICE, II, A.A.E.

9	FUTURE NOISE EXPOSURE MAP	
8	ZONING APPROACH PLAN – SOUTH HALF	10/11
7	ZONING APPROACH PLAN – NORTH HALF	10/11
6	ZONING AREA PLAN – SOUTH HALF	10/11
5	ZONING AREA PLAN – NORTH HALF	10/11
4	PERMIT MAP – SOUTH HALF	10/11
3	PERMIT MAP – NORTH HALF	10/11
2	PERMIT MAP – OVERALL PLAN	10/11
1	COVER SHEET	10/11
SHEET NUMBER	INDEX TO SHEETS	LATEST REVISION DATE

FILE NO. 995-1510-020





STATE CONTRACT No. 03-26-0032-0988



GENERAL NOTES

1. FOR CONFIGURATION AND DIMENSIONS OF APPROCHES, SEE STANDARD APPROACH DRAWING ST.T. 107 (RULES AND REGULATIONS OF THE MICHIGAN AERONAUTICS COMMISSION, AS REVISED).
2. THE ESTABLISHED ELEVATION OF THE AIRPORT IS 782 FEET AMSL. THE RADIUS OF THE INNER HORIZONTAL SURFACE IS 3 MILES. THE ELEVATION OF THE INNER HORIZONTAL SURFACE IS 931 FEET AMSL. THE OUTER RADIUS OF THE CONICAL SURFACE IS 6.32 MILES RISING AT A 50:1 SLOPE TO AN ELEVATION OF 1282 FEET AMSL. THE OUTER HORIZONTAL SURFACE ELEVATION IS 1282 FEET AMSL.
3. ELEVATIONS SHOWN ON AERIAL CONTOURS ARE ALLOWABLE HEIGHTS OF OBJECTS ABOVE MEAN SEA LEVEL (AMSL) IN AREAS INDICATED.
4. ORIGINAL BASE MAP IS DIGITIZED U.S.G.S. MAPS QUADRANGLE MAPS PROVIDED BY THE STATE OF MICHIGAN, DEPARTMENT OF NATURAL RESOURCES, LAND AND WATER DIVISION, LANSING, MICHIGAN,
5. ALL DIMENSIONED MILES ARE STATUTE MILES

PERMIT REQUIREMENTS:

-  PERMIT REQUIRED FOR STRUCTURES AND OBJECTS EXCEEDING 25 FEET IN HEIGHT.
-  PERMIT REQUIRED FOR STRUCTURES AND OBJECTS EXCEEDING 35 FEET IN HEIGHT.
-  PERMIT REQUIRED FOR STRUCTURES AND OBJECTS EXCEEDING 50 FEET IN HEIGHT.
-  PERMIT REQUIRED FOR STRUCTURES AND OBJECTS EXCEEDING 100 FEET IN HEIGHT.



Architectural, Engineering, Planning and Environmental Services

RS&H Michigan, Inc.
 G-3101 West Bristol Road, Suite 300
 Flint, Michigan 48507
 810-232-6899 FAX 810-232-6840
 www.rsandh.com



AIRPORT HEIGHT ZONING AND LAND USE PLANS



REVISIONS

NO.	DESCRIPTION	DATE
△	GENERAL UPDATE	8/06
△	GENERAL UPDATE	10/11

DATE ISSUED: 5/5/98
 REVIEWED BY: HES
 DRAWN BY: EMT

RS&H PROJECT NUMBER
 995-1510-020

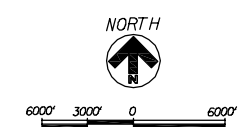
© 2006 REYNOLDS, SMITH AND HILLS INC.

SHEET TITLE

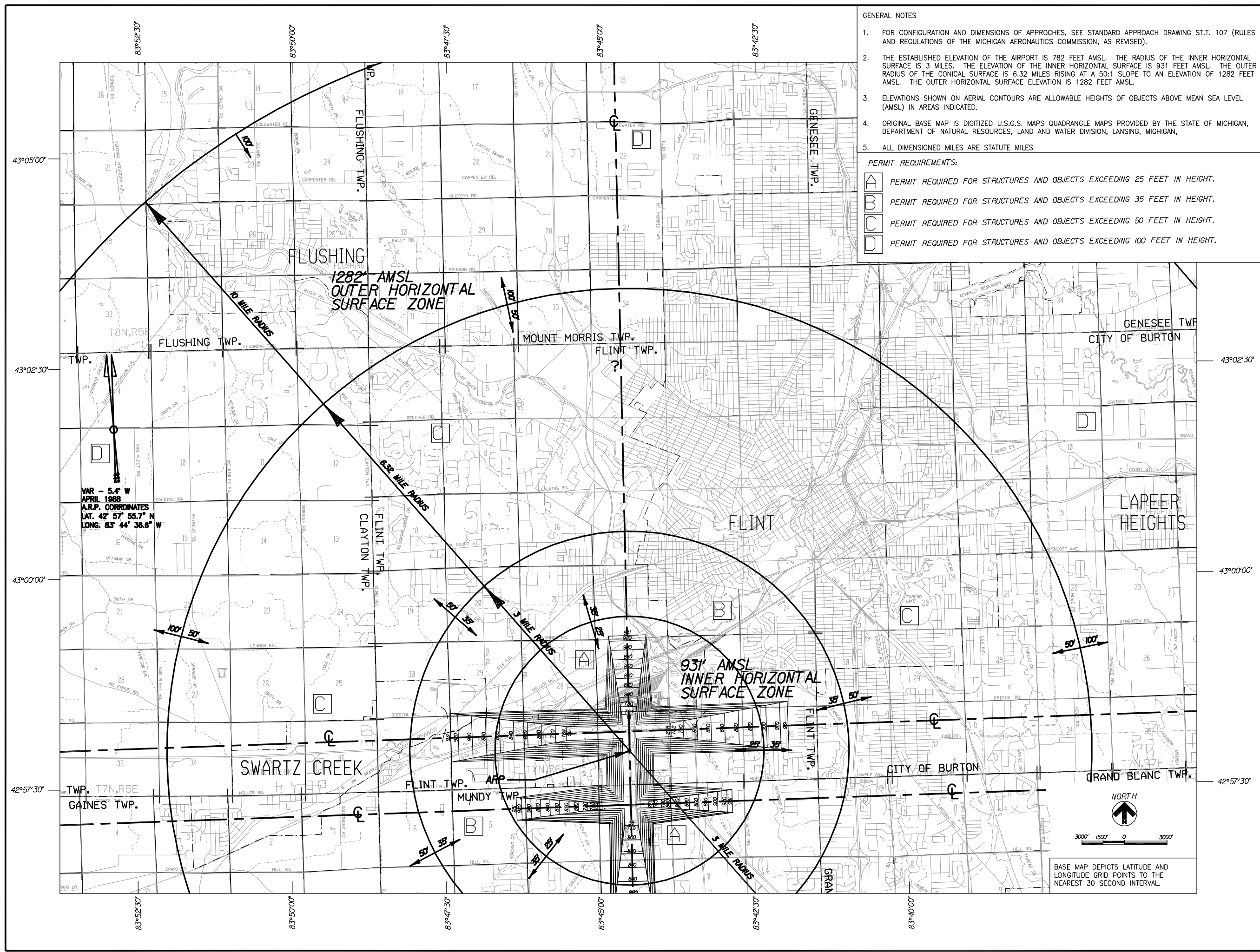
PERMIT MAP OVERALL PLAN

SHEET NUMBER

2 OF 9



BASE MAP DEPICTS LATITUDE AND LONGITUDE GRID POINTS TO THE NEAREST 30 SECOND INTERVAL.



- GENERAL NOTES
- FOR CONFIGURATION AND DIMENSIONS OF APPROCHES, SEE STANDARD APPROACH DRAWING ST.T. 107 (RULES AND REGULATIONS OF THE MICHIGAN AERONAUTICS COMMISSION, AS REVISED).
 - THE ESTABLISHED ELEVATION OF THE AIRPORT IS 782 FEET AMSL. THE RADIUS OF THE INNER HORIZONTAL SURFACE IS 3 MILES. THE ELEVATION OF THE INNER HORIZONTAL SURFACE IS 931 FEET AMSL. THE OUTER RADIUS OF THE CONICAL SURFACE IS 6.32 MILES RISING AT A 50:1 SLOPE TO AN ELEVATION OF 1282 FEET AMSL. THE OUTER HORIZONTAL SURFACE ELEVATION IS 1282 FEET AMSL.
 - ELEVATIONS SHOWN ON AERIAL CONTOURS ARE ALLOWABLE HEIGHTS OF OBJECTS ABOVE MEAN SEA LEVEL (AMSL) IN AREAS INDICATED.
 - ORIGINAL BASE MAP IS DIGITIZED U.S.G.S. MAPS QUADRANGLE MAPS PROVIDED BY THE STATE OF MICHIGAN, DEPARTMENT OF NATURAL RESOURCES, LAND AND WATER DIVISION, LANSING, MICHIGAN,
 - ALL DIMENSIONED MILES ARE STATUTE MILES

- PERMIT REQUIREMENTS:
- PERMIT REQUIRED FOR STRUCTURES AND OBJECTS EXCEEDING 25 FEET IN HEIGHT.
 - PERMIT REQUIRED FOR STRUCTURES AND OBJECTS EXCEEDING 35 FEET IN HEIGHT.
 - PERMIT REQUIRED FOR STRUCTURES AND OBJECTS EXCEEDING 50 FEET IN HEIGHT.
 - PERMIT REQUIRED FOR STRUCTURES AND OBJECTS EXCEEDING 100 FEET IN HEIGHT.

RS&H
 Architectural, Engineering, Planning
 and Environmental Services

RS&H Michigan, Inc.
 G-3101 West Bristol Road, Suite 300
 Flint, Michigan 48507
 810-232-6899 FAX 810-232-6840
 www.rsandh.com

Bishop - International - Airport
 Flint - Michigan

**AIRPORT HEIGHT
 ZONING AND
 LAND USE PLANS**

3 WORKING DAYS |
 BEFORE YOU DIG
 CALL MISS DIG®
 1-800-482-7171
 (TOLL FREE)

REVISIONS

NO.	DESCRIPTION	DATE
1	GENERAL UPDATE	8/06
2	GENERAL UPDATE	10/11

DATE ISSUED: 5/5/98
 REVIEWED BY: HES
 DRAWN BY: EMT

RS&H PROJECT NUMBER
 995-1510-020

© 2006 REYNOLDS, SMITH AND HILLS INC.

SHEET TITLE
**PERMIT MAP
 NORTH HALF**

SHEET NUMBER
3 OF 9

BASE MAP DEPICTS LATITUDE AND
 LONGITUDE GRID POINTS TO THE
 NEAREST 30 SECOND INTERVAL.

AIRPORT HEIGHT ZONING AND LAND USE PLANS

3 WORKING DAYS!
**BEFORE YOU DIG
CALL MISS DIG®**
1-800-482-7171
(TOLL FREE)

REVISIONS

NO.	DESCRIPTION	DATE
1	GENERAL UPDATE	8/06
2	GENERAL UPDATE	10/11

DATE ISSUED: 5/5/98

REVIEWED BY: HES

DRAWN BY: EMT

RS&H PROJECT NUMBER
995-1510-020

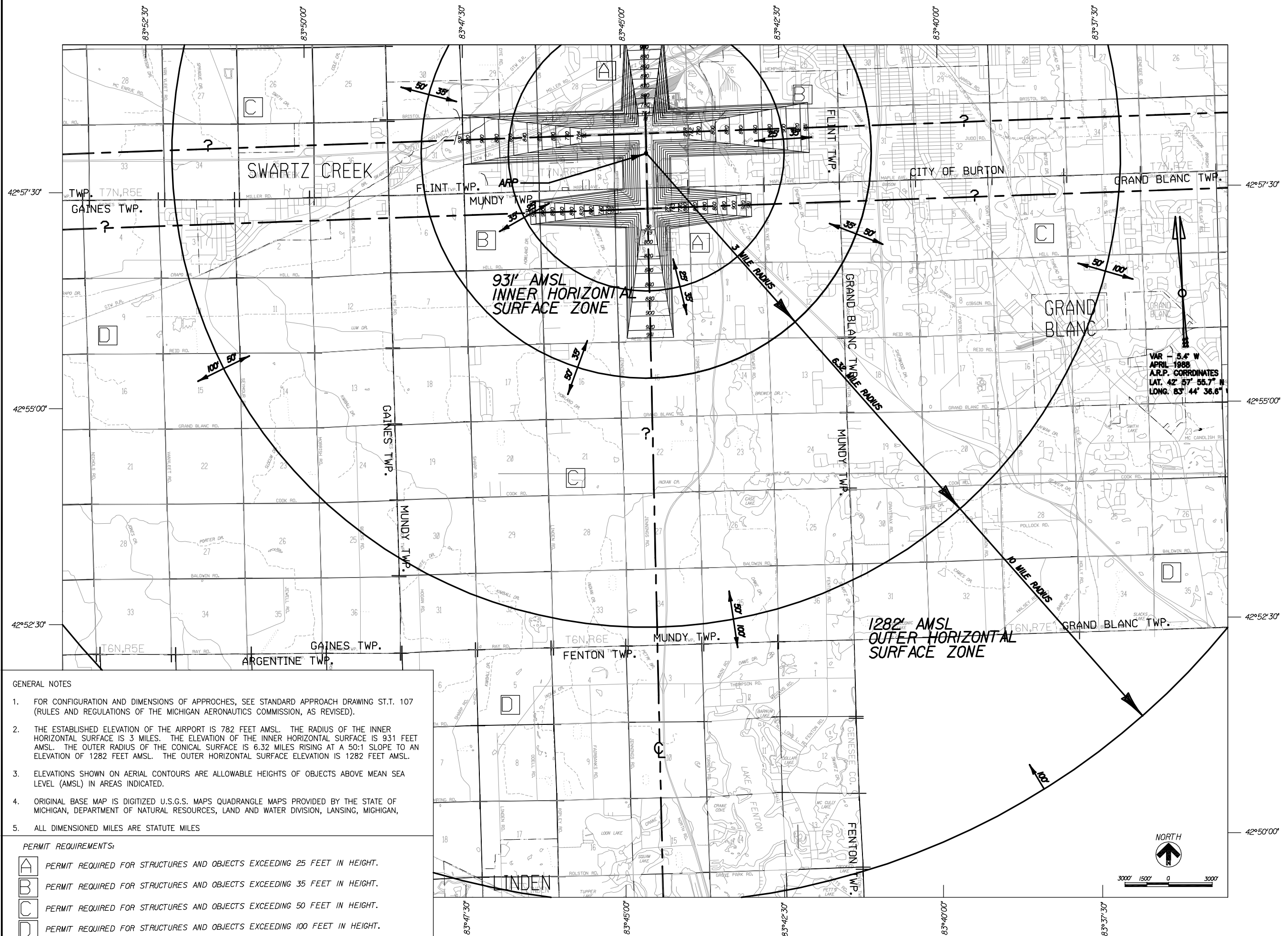
© 2006 REYNOLDS, SMITH AND HILLS INC.

SHEET TITLE

PERMIT MAP SOUTH HALF

SHEET NUMBER

4 OF 9



GENERAL NOTES

- FOR CONFIGURATION AND DIMENSIONS OF APPROCHES, SEE STANDARD APPROACH DRAWING ST.T. 107 (RULES AND REGULATIONS OF THE MICHIGAN AERONAUTICS COMMISSION, AS REVISED).
- THE ESTABLISHED ELEVATION OF THE AIRPORT IS 782 FEET AMSL. THE RADIUS OF THE INNER HORIZONTAL SURFACE IS 3 MILES. THE ELEVATION OF THE INNER HORIZONTAL SURFACE IS 931 FEET AMSL. THE OUTER RADIUS OF THE CONICAL SURFACE IS 6.32 MILES RISING AT A 50:1 SLOPE TO AN ELEVATION OF 1282 FEET AMSL. THE OUTER HORIZONTAL SURFACE ELEVATION IS 1282 FEET AMSL.
- ELEVATIONS SHOWN ON AERIAL CONTOURS ARE ALLOWABLE HEIGHTS OF OBJECTS ABOVE MEAN SEA LEVEL (AMSL) IN AREAS INDICATED.
- ORIGINAL BASE MAP IS DIGITIZED U.S.G.S. MAPS QUADRANGLE MAPS PROVIDED BY THE STATE OF MICHIGAN, DEPARTMENT OF NATURAL RESOURCES, LAND AND WATER DIVISION, LANSING, MICHIGAN.
- ALL DIMENSIONED MILES ARE STATUTE MILES

PERMIT REQUIREMENTS:

- A** PERMIT REQUIRED FOR STRUCTURES AND OBJECTS EXCEEDING 25 FEET IN HEIGHT.
- B** PERMIT REQUIRED FOR STRUCTURES AND OBJECTS EXCEEDING 35 FEET IN HEIGHT.
- C** PERMIT REQUIRED FOR STRUCTURES AND OBJECTS EXCEEDING 50 FEET IN HEIGHT.
- D** PERMIT REQUIRED FOR STRUCTURES AND OBJECTS EXCEEDING 100 FEET IN HEIGHT.



AIRPORT HEIGHT ZONING AND LAND USE PLANS

3 WORKING DAYS | BEFORE YOU DIG CALL MISS DIG® | 1-800-482-7171 (TOLL FREE)

REVISIONS

NO.	DESCRIPTION	DATE
△	GENERAL UPDATE	8/06
△	GENERAL UPDATE	10/11

DATE ISSUED: 5/5/98
REVIEWED BY: HES
DRAWN BY: EMT

RS&H PROJECT NUMBER
995-1510-020

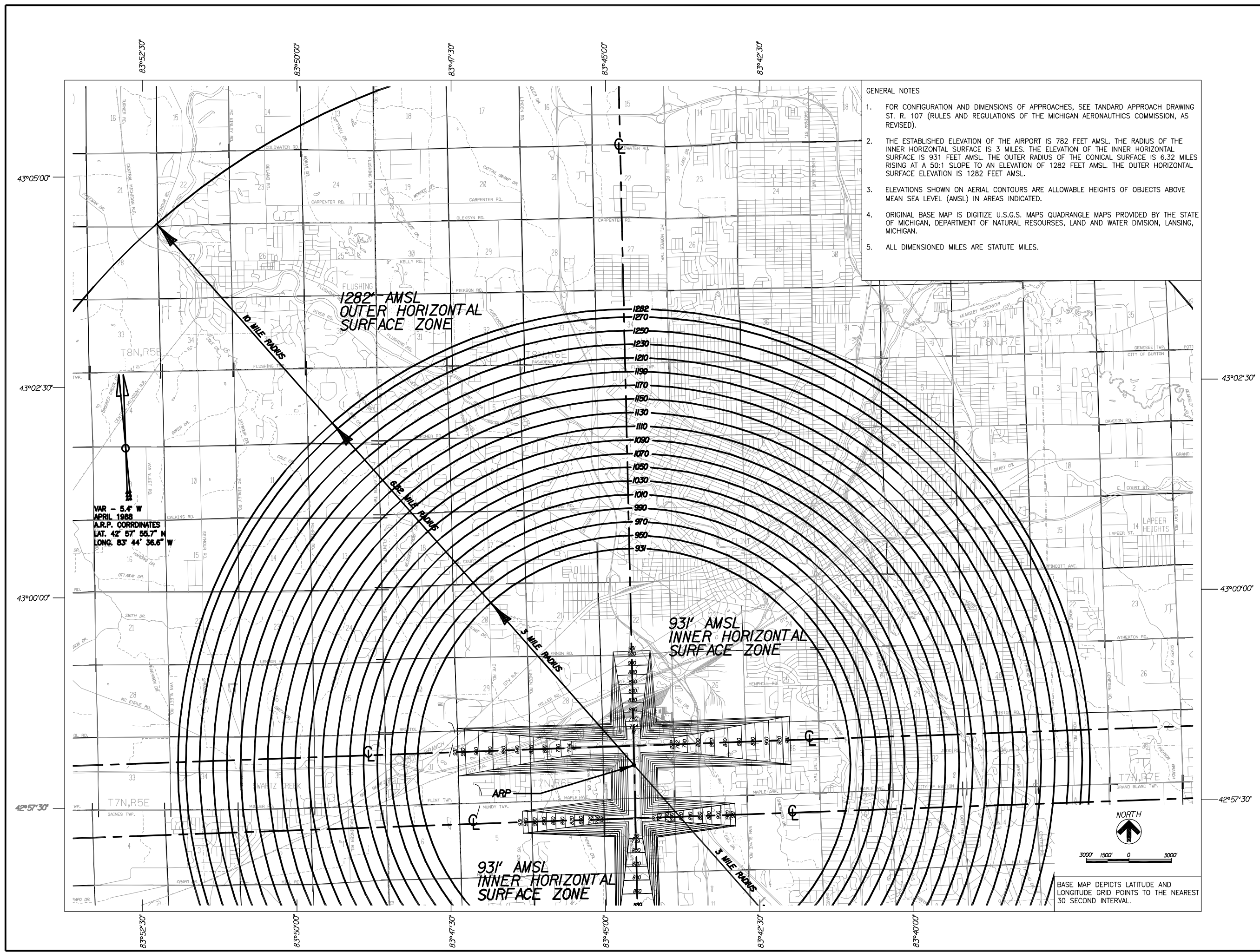
© 2006 REYNOLDS, SMITH AND HILLS INC.

SHEET TITLE

ZONING AREA PLAN NORTH HALF

SHEET NUMBER

5 OF 9



AIRPORT HEIGHT ZONING AND LAND USE PLANS

3 WORKING DAYS |
BEFORE YOU DIG
CALL MISS DIG®
1-800-482-7171
(TOLL FREE)

REVISIONS

NO.	DESCRIPTION	DATE
1	GENERAL UPDATE	8/06
2	GENERAL UPDATE	10/11

DATE ISSUED: 5/5/98

REVIEWED BY: HES

DRAWN BY: EMT

RS&H PROJECT NUMBER
995-1510-020

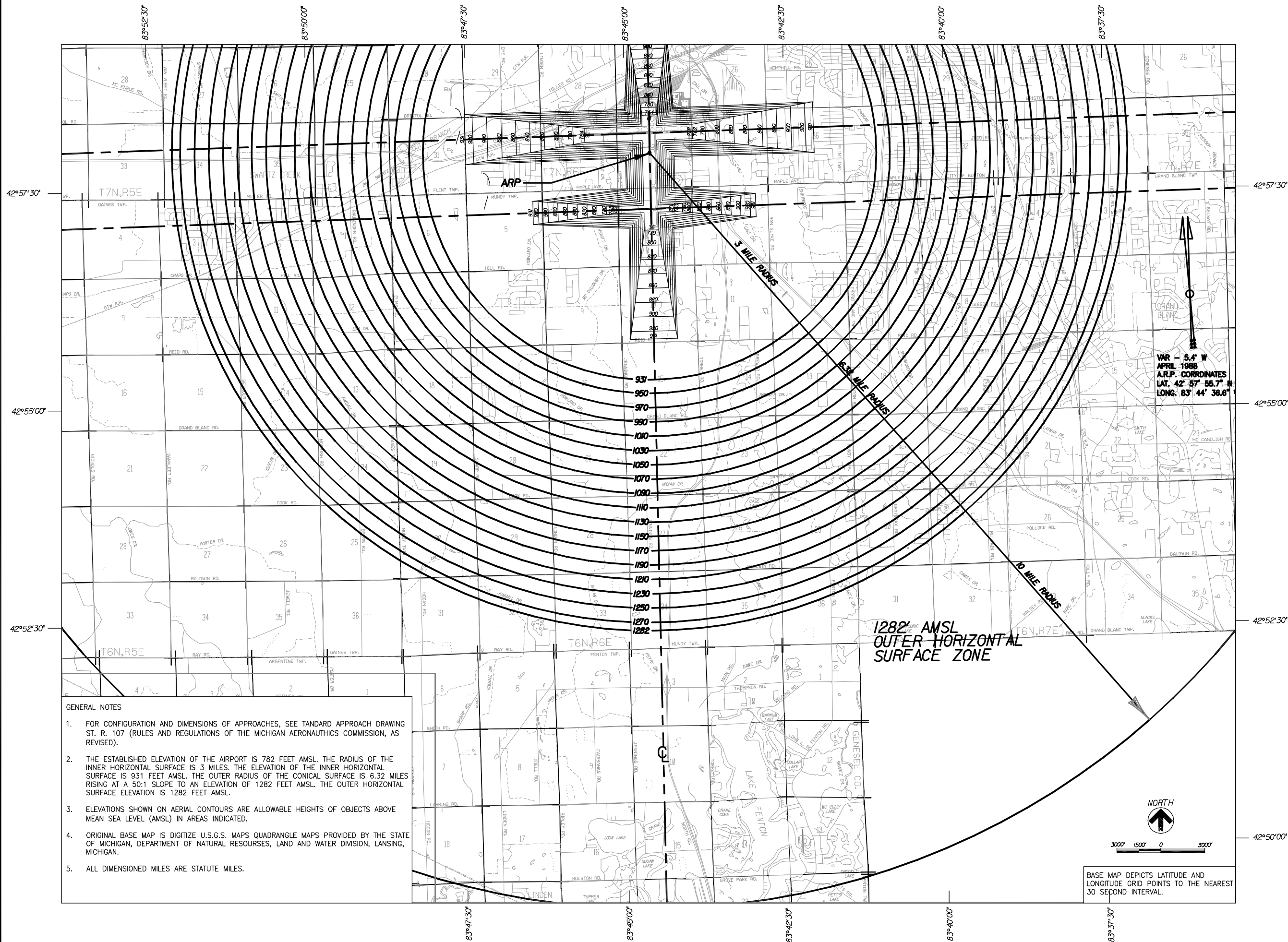
© 2006 REYNOLDS, SMITH AND HILLS INC.

SHEET TITLE

ZONING AREA PLAN SOUTH HALF

SHEET NUMBER

6 OF 9



GENERAL NOTES

- FOR CONFIGURATION AND DIMENSIONS OF APPROACHES, SEE TANDARD APPROACH DRAWING ST. R. 107 (RULES AND REGULATIONS OF THE MICHIGAN AERONAUTICS COMMISSION, AS REVISED).
- THE ESTABLISHED ELEVATION OF THE AIRPORT IS 782 FEET AMSL. THE RADIUS OF THE INNER HORIZONTAL SURFACE IS 3 MILES. THE ELEVATION OF THE INNER HORIZONTAL SURFACE IS 931 FEET AMSL. THE OUTER RADIUS OF THE CONICAL SURFACE IS 6.32 MILES RISING AT A 50:1 SLOPE TO AN ELEVATION OF 1282 FEET AMSL. THE OUTER HORIZONTAL SURFACE ELEVATION IS 1282 FEET AMSL.
- ELEVATIONS SHOWN ON AERIAL CONTOURS ARE ALLOWABLE HEIGHTS OF OBJECTS ABOVE MEAN SEA LEVEL (AMSL) IN AREAS INDICATED.
- ORIGINAL BASE MAP IS DIGITIZE U.S.G.S. MAPS QUADRANGLE MAPS PROVIDED BY THE STATE OF MICHIGAN, DEPARTMENT OF NATURAL RESOURCES, LAND AND WATER DIVISION, LANSING, MICHIGAN.
- ALL DIMENSIONED MILES ARE STATUTE MILES.

BASE MAP DEPICTS LATITUDE AND LONGITUDE GRID POINTS TO THE NEAREST 30 SECOND INTERVAL.

AIRPORT HEIGHT ZONING AND LAND USE PLANS



REVISIONS

NO.	DESCRIPTION	DATE
△	GENERAL UPDATE	8/06
△	GENERAL UPDATE	10/11

DATE ISSUED: 5/5/98
REVIEWED BY: HES
DRAWN BY: EMT

RS&H PROJECT NUMBER
995-1510-020

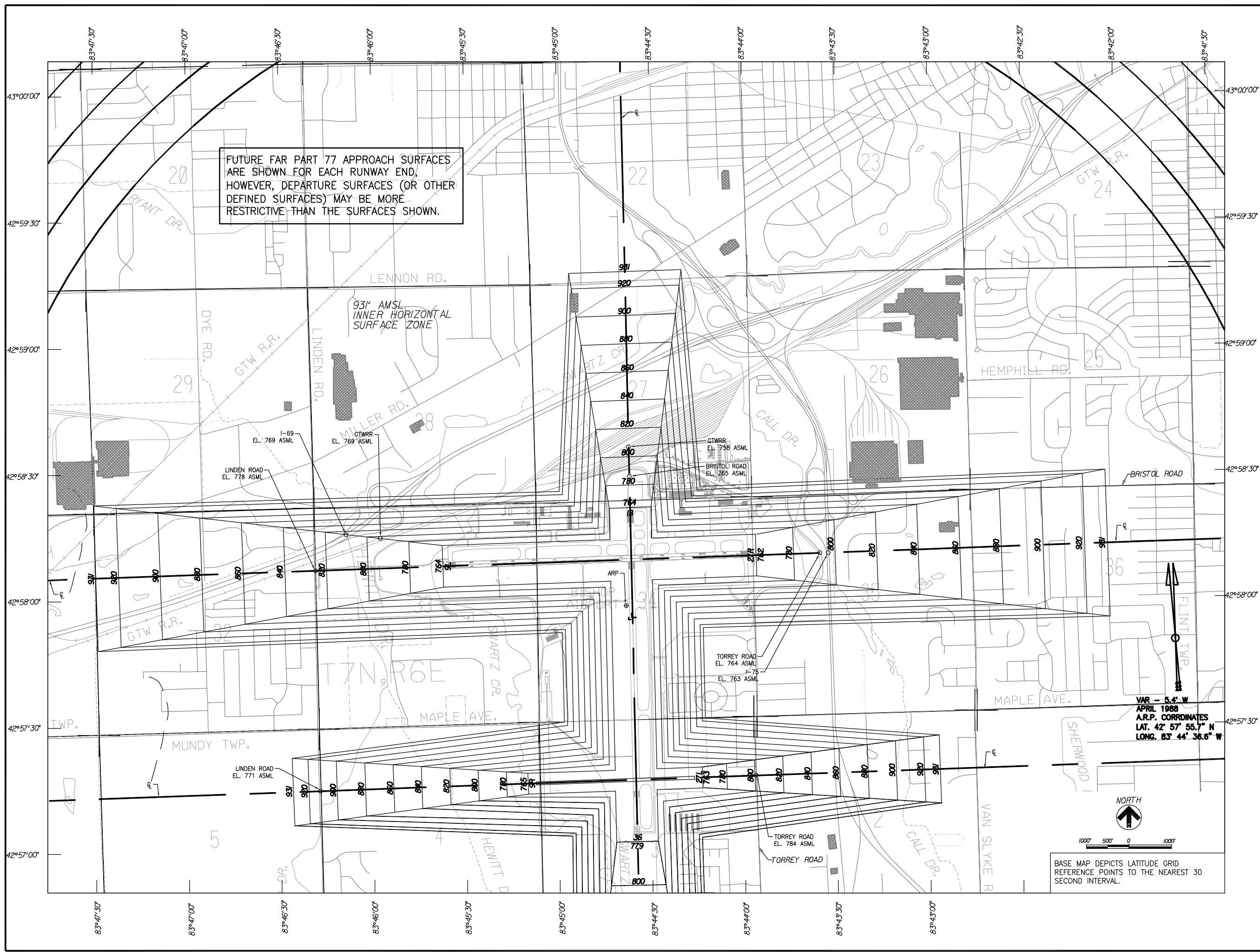
© 2006 REYNOLDS, SMITH AND HILLS INC.

SHEET TITLE

ZONING APPROACH PLAN NORTH HALF

SHEET NUMBER

7 OF 9



AIRPORT HEIGHT ZONING AND LAND USE PLANS



REVISIONS

NO.	DESCRIPTION	DATE
1	GENERAL UPDATE	8/06
2	GENERAL UPDATE	10/11

DATE ISSUED: 5/5/98

REVIEWED BY: HES

DRAWN BY: EMT

RS&H PROJECT NUMBER
995-1510-020

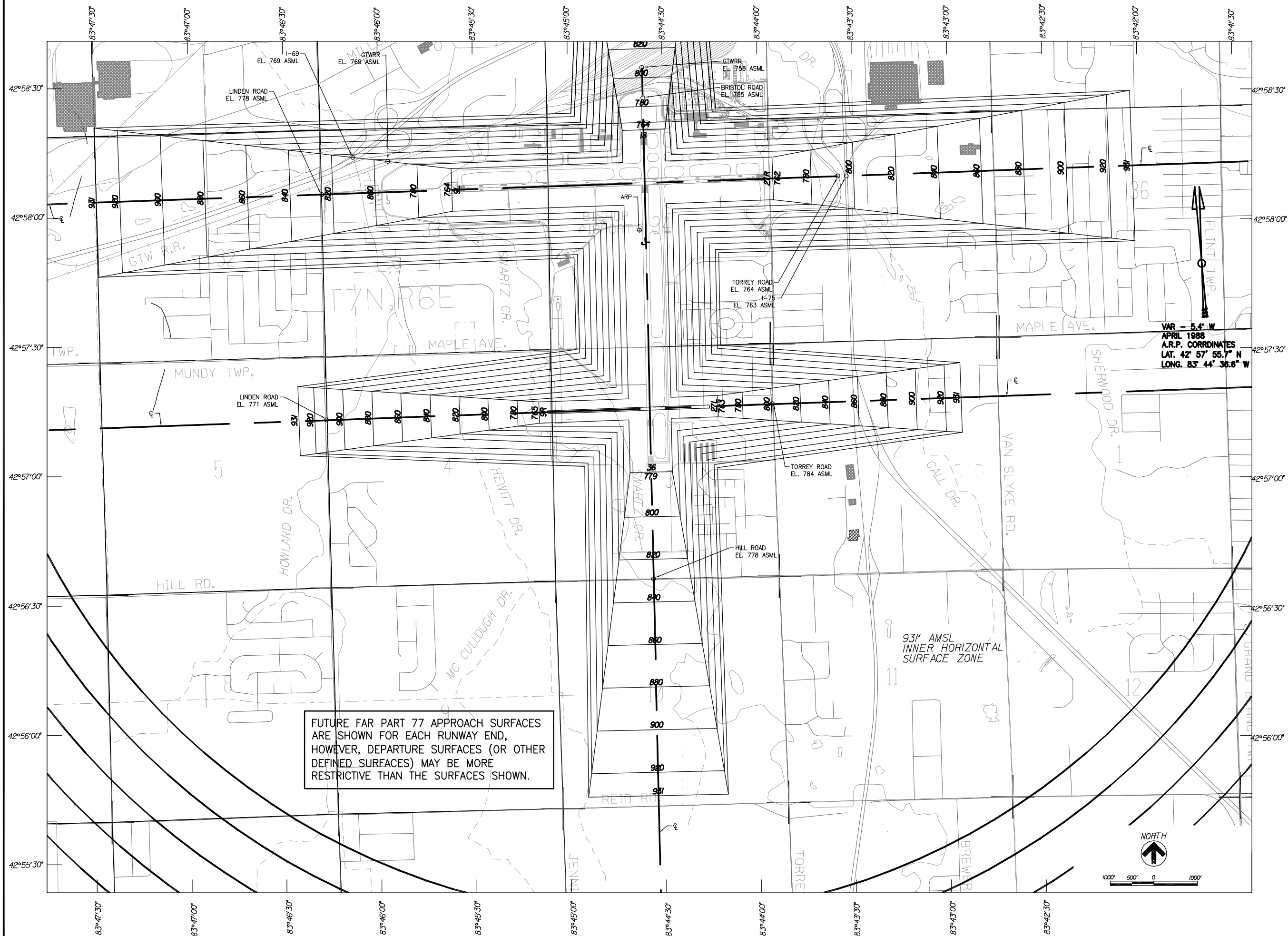
© 2006 REYNOLDS, SMITH AND HILLS INC.

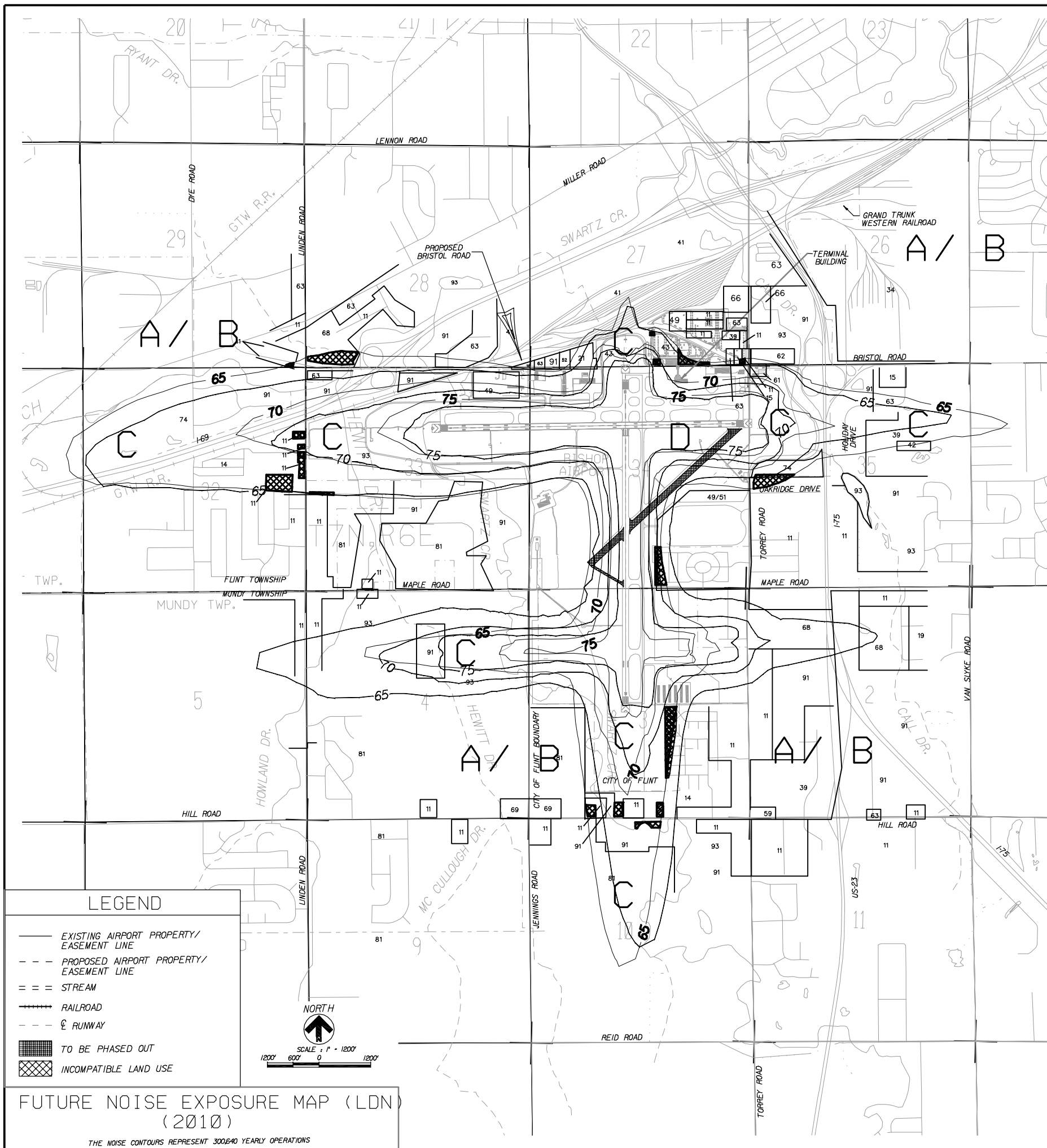
SHEET TITLE

ZONING
APPROACH PLAN
SOUTH HALF

SHEET NUMBER

8 OF 9





LAND USE GUIDANCE CHART I: AIRPORT NOISE INTERPOLATION

LAND USE GUIDANCE ZONES (LUG)	NOISE EXPOSURE CLASS	INPUTS: AIRCRAFT NOISE EXPOSURE NIGHT AVG. SOUND LEVEL	AIRCRAFT NOISE ESTIMATING FORECAST	METHODOLOGIES: COMPOSITE NOISE RATING	HUD NOISE ASSESSMENT GUIDELINES	SUGGESTED NOISE CONTROLS
A	MINIMAL EXPOSURE	70 55	70 20	70 90	0 55	*CLEARLY ACCEPTABLE* NORMALLY REQUIRES NO SPECIAL CONSIDERATIONS
B	MODERATE EXPOSURE	70 65	70 30	70 100	0 65	*NORMALLY ACCEPTABLE* LAND USE CONTROLS SHOULD BE CONSIDERED
C	SIGNIFICANT EXPOSURE	70 75	70 40	70 115	0 75	*NORMALLY UNACCEPTABLE* NOISE EASEMENTS, LAND USE, AND OTHER COMPATIBILITY CONTROLS RECOMMENDED
D	SEVERE EXPOSURE	HIGHER	HIGHER	HIGHER	HIGHER	*CLEARLY UNACCEPTABLE* CONTAINMENT WITHIN AIRPORT BOUNDARY OR USE OF POSITIVE COMPATIBILITY CONTROLS RECOMMENDED

LAND USE GUIDANCE CHART II: LAND USE NOISE SENSITIVITY INTERPOLATION

SLUCM NO.	LAND USE NAME	LUG ZONE ¹	STUDY	SLUCM NO.	LAND USE NAME	LUG ZONE ¹	STUDY
10	RESIDENTIAL	A-B		50	TRADE ⁴		
11	HOUSEHOLD UNITS:			51	WHOLESALE TRADE	C-D	
11.11	SINGLE UNITS--DETACHED	A		52	RETAIL TRADE--BUILDING MATERIALS, HARDWARE, AND FARM EQUIPMENT	C	
11.13	SINGLE UNITS--ATTACHED ROW	B		53	RETAIL TRADE--GENERAL MERCHANDISE	C	
11.21	TWO UNITS--SIDE-BY-SIDE	A		54	RETAIL TRADE--FOOD	C	
11.22	TWO UNITS--ONE ABOVE OTHER	B		55	RETAIL TRADE--AUTOMOTIVE, MARINE CRAFT, AIRCRAFT, AND ACCESSORIES	C	
11.31	APARTMENTS--WALK UP	B-C		56	RETAIL TRADE--APPAREL AND ACCESSORIES	C	
11.32	APARTMENTS--ELEVATOR	B-C		57	RETAIL TRADE--FURNITURE, HOME FURNISHINGS, AND EQUIPMENT	C	
12	GROUP QUARTERS	A-B		58	RETAIL TRADE--EATING AND DRINKING, OTHER RETAIL TRADE	C-D	
13	RESIDENTIAL HOTELS	B		59	RETAIL TRADE--EATING AND DRINKING, OTHER RETAIL TRADE	C-D	
14	MOBILE HOME PARKS OR COURTS	A		60	SERVICES ⁴		
15	TRANSIENT LODGINGS	A-C		61	FINANCE, INSURANCE, AND REAL ESTATE SERVICES	B	
19	OTHER RESIDENTIAL	A-C		62	PERSONAL SERVICES	B	
20	MANUFACTURING ²	C-D		63	BUSINESS SERVICES	B	
21	FOOD AND KINDRED PRODUCTS--MANUFACTURING	C-D		64	REPAIR SERVICES	B-C	
22	TEXTILE MILL PRODUCTS--MANUFACTURING	C-D		65	PROFESSIONAL SERVICES	C	
23	APPAREL AND OTHER FINISHED PRODUCTS MADE FROM FABRICS, LEATHER, AND SIMILAR MATERIALS--MANUFACTURING	C-D		66	CONTRACT CONSTRUCTION SERVICES	C	
24	LUMBER AND WOOD PRODUCTS (EXCEPT FURNITURE)--MANUFACTURING	C-D		67	GOVERNMENTAL SERVICES	B	
25	FURNITURE AND FIXTURES--MANUFACTURING	C-D		68	EDUCATIONAL SERVICES	A-B	
26	PAPER AND ALLIED PRODUCTS--MANUFACTURING	C-D		69	MISCELLANEOUS SERVICES	A-C	
27	PRINTING, PUBLISHING, AND ALLIED INDUSTRIES	C-D		70	CULTURAL, ENTERTAINMENT, AND RECREATIONAL		
28	CHEMICALS AND ALLIED PRODUCTS--MANUFACTURING	C-D		71	CULTURAL ACTIVITIES AND NATURE EXHIBITIONS	A	
29	PETROLEUM REFINING AND RELATED INDUSTRIES ³	C-D		72	PUBLIC ASSOCIATION	A	
30	MANUFACTURING (CONT.) ²	C-D		73	AMUSEMENTS	C	
31	RUBBER AND MISCELLANEOUS PLASTIC PRODUCTS--MANUFACTURING	C-D		74	RECREATIONAL ACTIVITIES	B-C	
32	STONE, CLAY, AND GLASS PRODUCTS--MANUFACTURING	C-D		75	RESORTS AND GROUP CAMPS	A	
33	PRIMARY METAL INDUSTRIES	D		76	PARKS	A-C	
34	FABRICATED METAL PRODUCTS--MANUFACTURING	D		77	OTHER CULTURAL, ENTERTAINMENT, AND RECREATIONALS	A-B	
35	PROFESSIONAL, SCIENTIFIC, & CONTROLLING INSTRUMENTS, PHOTOGRAPHIC AND OPTICAL GOODS, WATCHES AND CLOCKS--MANUFACTURING	B		80	RESOURCE PRODUCTION AND EXTRACTION		
39	MISCELLANEOUS MANUFACTURING	C-D		81	AGRICULTURE RELATED ACTIVITIES	C-D	
40	TRANSPORTATION, COMMUNICATION, AND UTILITIES			82	AGRICULTURE RELATED ACTIVITIES	C-D	
41	RAILROAD, RAPID RAIL TRANSIT, AND STREET RAILWAY TRANSPORTATION	D		83	FORESTRY ACTIVITIES AND RELATED SERVICES	D	
42	MOTOR VEHICLE TRANSPORTATION	D		84	FISHING ACTIVITIES AND RELATED SERVICES	D	
43	AIRCRAFT TRANSPORTATION	D		85	MINING ACTIVITIES AND RELATED ACTIVITIES	D	
44	MARINE CRAFT TRANSPORTATION	D		89	OTHER RESOURCE PRODUCTION AND EXTRACTION	C-D	
45	HIGHWAY AND STREET RIGHT-OF-WAY	D		90	UNDEVELOPED LAND AND WATER AREAS		
46	AUTOMOBILE PARKING	D		91	UNDEVELOPED AND UNUSED LAND AREA (EXCLUDING NON-COMMERCIAL FOREST DEVELOPMENT)	D	
47	COMMUNICATION	A-D		92	NONCOMMERCIAL FOREST DEVELOPMENT	D	
48	UTILITIES	D		93	WATER AREAS	A-D	
49	OTHER TRANSPORTATION, COMMUNICATION, AND UTILITIES	A-D		94	VACANT FLOOR AREA UNDER CONSTRUCTION	A-D	
				95	OTHER UNDEVELOPED LAND AND WATER AREAS	A-D	

1 REFER TO LAND USE GUIDANCE CHART I
 2 ZONE 'C' SUGGESTED MAXIMUM EXCEPT WHERE EXCEEDED BY SELF-GENERATED NOISE
 3 ZONE 'A' FOR NOISE PURPOSES, OBSERVE NORMAL HAZARD PRECAUTIONS
 4 IF ACTIVITY IS NOT IN SUBSTANTIAL AIR-CONDITIONED BUILDING TO THE NEXT HIGHER ZONE REQUIREMENTS LIKELY TO VARY - INDIVIDUAL APPRAISAL RECOMMENDED
 5 SLUCM: STANDARD LAND USE CODING MANUAL



Architectural, Engineering, Planning and Environmental Services

RS&H Michigan, Inc.
 G-3101 West Bristol Road, Suite 300
 Flint, Michigan 48507
 810-232-6899 FAX 810-232-6840
 www.rsandh.com

Bishop - International - Airport
 Flint - Michigan

AIRPORT HEIGHT ZONING AND LAND USE PLANS

3 WORKING DAYS | BEFORE YOU DIG CALL MISS DIG | 1-800-482-7171 (TOLL FREE)

REVISIONS

NO.	DESCRIPTION	DATE

DATE ISSUED: 5/5/98
 REVIEWED BY: HES
 DRAWN BY: EMT

RS&H PROJECT NUMBER 995-1510-020

© 2006 REYNOLDS, SMITH AND HILLS INC.
 SHEET TITLE

FUTURE NOISE EXPOSURE MAP

SHEET NUMBER 9 OF 9

FUTURE NOISE EXPOSURE MAP (LDN) (2010)
 THE NOISE CONTOURS REPRESENT 300/640 YEARLY OPERATIONS